

Geologic Map of the Bedford 30- x 60-Minute Quadrangle, Indiana

By
Donald C. Tripp, Sarah A. Burgess, Isaac J. Allred, Robin F. Rupp, José Luis Antiniao, Henry M. Loope, and Jayson R. Eldridge
Bloomington, Indiana
2023

ACKNOWLEDGEMENTS AND DISCLAIMER

This geologic map was created in part through the STATEMAP Program supported by the U.S. Geological Survey under Cooperative Agreement No. G15C0004. The map and explanatory information is intended for use by the public and is not intended to be used for any other purpose. The map and explanatory information is intended for use by the public and is not intended to be used for any other purpose. The map and explanatory information is intended for use by the public and is not intended to be used for any other purpose.

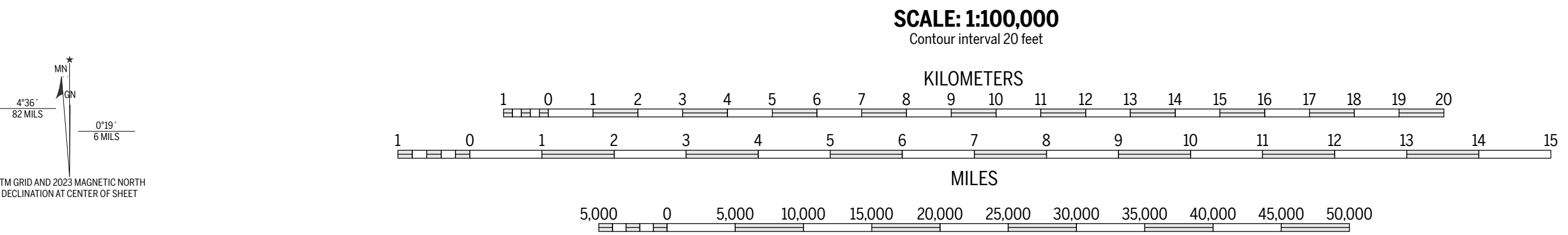
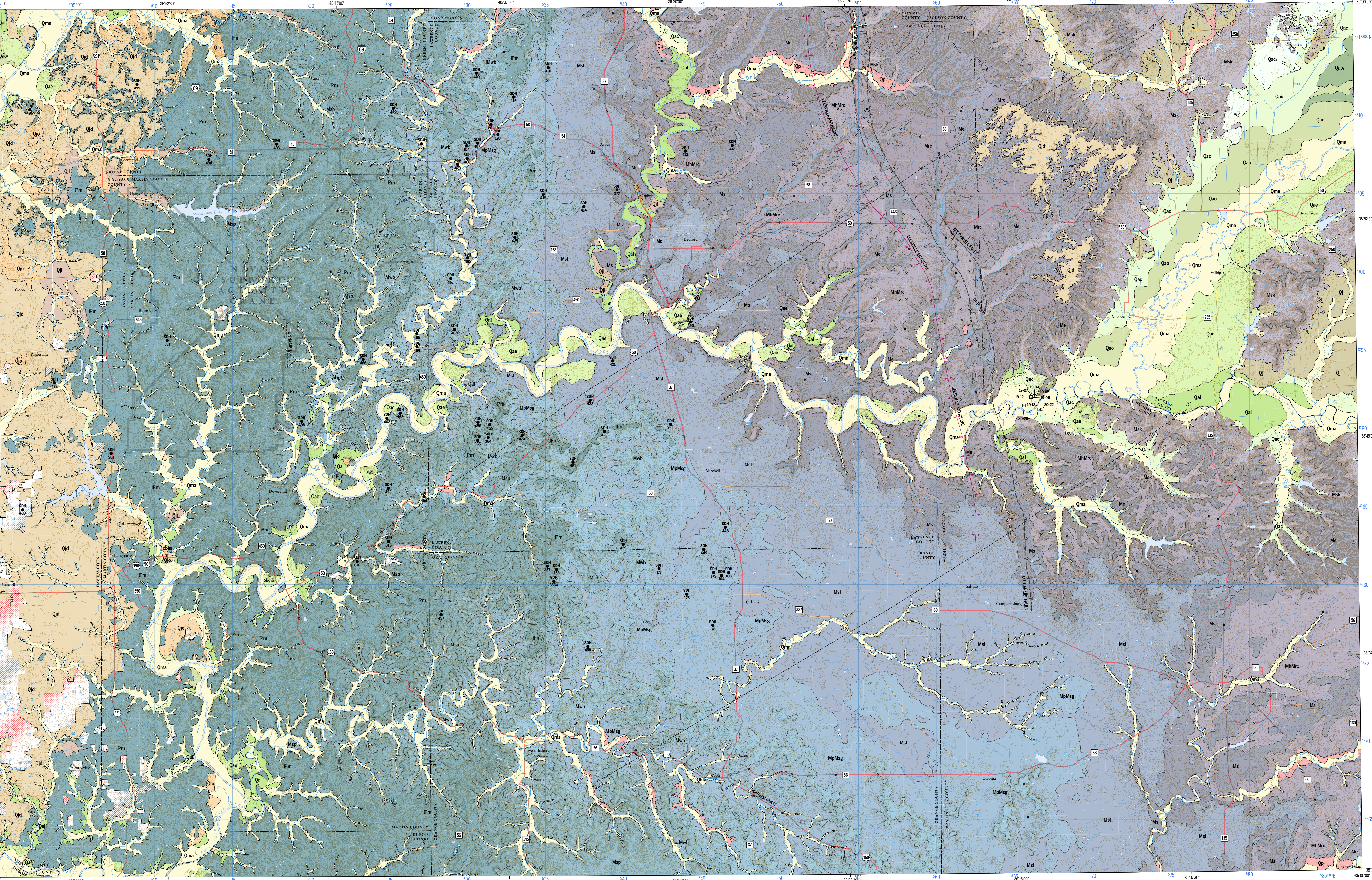
LIMITATION OF WARRANTIES AND LIABILITY: Except for the express warranty shown, the product is provided "as is" without any other warranties or conditions, expressed or implied, or suitability for a particular purpose or use. The risk or liability resulting from the use of this product is assumed by the user. Indiana Geological and Water Survey does not assume any responsibility for any damage, including but not limited to, loss of revenue or profit, loss of data, or any other damage, resulting from the use of this product. Indiana Geological and Water Survey is not responsible for claims by a third party. The maximum aggregate liability in the original purchase shall not exceed the amount paid by you for the product.

INTRODUCTION

This map is a compilation of new and previous work. Unit descriptions listed on the map are abbreviated. Full citations of previous work, detailed unit descriptions, expanded data field information, and links to additional resources are detailed in the accompanying pamphlets.

UNCONSOLIDATED SEDIMENTS

- Martinsville Formation**
Holocene
- Atherton Formation**
late Pleistocene
- Jessup Formation**
middle Pleistocene
- Prospect Formation**
early to middle Pleistocene
- Bedrock**
- Raccoon Creek Group**
Alton, Morrow, Desmoinesan
- Stephensport Group**
Chertifer
- West Baden Group**
Chertifer
- Blue River Group**
Chertifer, Valerian
- Sanders Group**
Valerian
- Borden Group**
Valerian
- Spicket Knob Formation**



- Bedrock survey drill hole number
- Surficial borehole with station number
- Field observation
- Normal fault – identity and existence certain, location inferred. Bail and bar on downthrown block
- Scissor fault, normal slip offset – identity and existence certain, location inferred. Rectangles on downthrown block
- Scissor fault, normal slip offset – identity and existence uncertain, location approximate. Rectangles on downthrown block
- Formation or group contact – identity and existence certain, location approximate
- Anticline – identity and existence certain, location approximate
- Disturbed or mammary land (includes quarries and excavation/fill associated with infrastructure)

SUGGESTED CITATION

Tripp, D. C., Burgess, S. A., Allred, I. J., Rupp, R. F., Antiniao, J. L., Loope, H. M., and Eldridge, J. R., 2023. Geologic map of the Bedford 30- x 60-minute quadrangle, Indiana. Indiana Geological and Water Survey, Indiana Journal of Earth Sciences, v. 5, 1 sheet, scale 1:100,000, 15 p. pamphlet, doi: 10.14434/ijes.v5i1.36404

