



IUScholarWorks at Indiana University South Bend

Engineering Synthetic Antibody Binders for Allosteric Inhibition of Prolactin Receptor Signaling

Rizk, S. S., Kouadio, J.-L. K., Szymborska, A., Duguid, E. M., Mukherjee, S.,
Zheng, J., Clevenger, C. V., & Kossiakoff, A. A.

To cite this article: Rizk, Shahir S., et al. “Engineering Synthetic Antibody Binders
for Allosteric Inhibition of Prolactin Receptor Signaling.” *Cell
Communication and Signaling*, vol. 13, no. 1, Jan. 2015, p. 1. *BioMed Central*,
doi:10.1186/s12964-014-0080-8.

This document has been made available through IUScholarWorks repository, a
service of the Indiana University Libraries. Copyrights on documents in
IUScholarWorks are held by their respective rights holder(s). Contact
iusw@indiana.edu for more information.

SHORT REPORT

Open Access

Engineering synthetic antibody binders for allosteric inhibition of prolactin receptor signaling

Shahir S Rizk^{1,2}, Jean-Louis K Kouadio^{1,3}, Anna Szymborska^{1,4}, Erica M Duguid¹, Somnath Mukherjee¹, Jiamao Zheng⁵, Charles V Clevenger^{5,6} and Anthony A Kossiakoff^{1*}

Abstract

Background: Many receptors function by binding to multiple ligands, each eliciting a distinct biological output. The extracellular domain of the human prolactin receptor (hPRL-R) uses an identical epitope to bind to both prolactin (hPRL) and growth hormone (hGH), yet little is known about how each hormone binding event triggers the appropriate response.

Findings: Here, we utilized a phage display library to generate synthetic antibodies (sABs) that preferentially modulate hPRL-R function in a hormone-dependent fashion. We determined the crystal structure of a sAB-hPRL-R complex, which revealed a novel allosteric mechanism of antagonism, whereby the sAB traps the receptor in a conformation more suitable for hGH binding than hPRL. This was validated by examining the effect of the sABs on hormone internalization via the hPRL-R and its downstream signaling pathway.

Conclusions: The findings suggest that subtle structural changes in the extracellular domain of hPRL-R induced by each hormone determine the biological output triggered by hormone binding. We conclude that sABs generated by phage display selection can detect these subtle structural differences, and therefore can be used to dissect the structural basis of receptor-ligand specificity.

Keywords: Prolactin signaling, Synthetic antibody, Phage display, Allostery

Findings

It is commonplace for a single receptor to recognize a number of different ligands and a single ligand to bind to a number of different receptors [1]. In many cases, the distinct biological output elicited by each ligand is due to its interaction with a different epitope on the surface of a receptor, triggering a defined signaling pathway. In some unique cases, a receptor is able to interact with different ligands using an identical set of amino acids, yet each ligand results in a distinct biological outcome.

A prominent example of this type of promiscuity is the prolactin receptor (PRL-R), which uses the same set of amino acids on its extracellular domain (ECD) to bind to two different hormones: prolactin (PRL) [2,3] and growth hormone (GH) [4,5]. Prolactin receptor

signaling is primarily triggered by homodimerization [3], which is induced by GH or PRL binding. Since the structures of hGH and PRL contain no tertiary symmetry, in forming their respective complexes with the ECD homodimers, the hormones employ opposite faces utilizing surface epitopes possessing quite different topographical and electrostatic features [4-6]. As a consequence, in the case for both PRL and GH, the ECD binding sites have quite different affinities: a high affinity site called Site 1, and a lower affinity site, Site2 [6]. Although Site1 has higher affinity than Site2, quite remarkably, the paratope they interact with on the ECD is virtually identical. Thus, the same binding patch on the PRL-R ECD recognizes two distinct binding interfaces on each of two different hormones, yet each hormone activates a distinct biological outcome. Exactly how this is accomplished is an area of intense interest in both basic and applied research and many unresolved molecular recognition issues remain.

We present, here, a methodology that utilizes a novel class of affinity reagents generated by phage display

* Correspondence: koss@bsd.uchicago.edu

¹Department of Biochemistry and Molecular Biology, The University of Chicago, Chicago, IL, USA

Full list of author information is available at the end of the article

selections that induce allosteric changes in a target protein that can effectively differentiate between ligands that bind to the same receptor epitope. These affinity reagents are based on the antigen-antibody fragment (Fab) antibody frameworks and are called “synthetic antibodies” or sABs [7]. The extracellular domain of the human prolactin receptor (hPRL-R) was chosen as a target system because of its number of activating hormones [5,6,8] and the biological implications of being able to selectively tune its activity [3,9,10]. Structural studies comparing the two hormone-receptor complexes [4] suggested that such selectivity could be achieved by capturing subtle conformational differences induced by hGH versus hPRL at either site in the ECD through an allosteric-control mechanism.

To generate sABs against hPRL-R, the immobilized ECD was incubated with a 10^{10} member reduced genetic code phage display library [11]. The sABs are displayed in bivalent format by fusion to the pIII coat protein of M13 phage. Diversity is introduced into four of the six complementary determining region (CDR) binding loops. After three rounds of selection followed by a binding screen by phage ELISA, four unique sAB clones were identified. All four sABs, designated A4, A8, A9 and A10, were expressed and purified, and their affinities for the hPRL-R ECD were determined by surface plasmon resonance (SPR) (Table 1). Three of the four sABs exhibited nanomolar affinities for the hPRL-R ECD. sAB, A4 showed little detectable binding in a protein format and thus was used as a negative control in the subsequent experiments.

To gain insight into the structural basis of the interactions between the sABs and hPRL-R, we determined the crystal structure of the receptor in complex with sAB A8. In the structure, the sAB binds to the opposite face of the ECD away from the hormone-binding site (Figure 1a). Interactions between the two molecules are mediated by side chain residues of the CDR loops of the sAB and the hinge region that connects the two tandem fibronectin (FN) domains of hPRL-R (Figure 1b). Alignment of the ECD FN2 domain in the context of the sAB-bound structure with the 2:1 PRLR: PRL structure [8] reveals that the sAB captures a hinge-bending conformation that results

in a subtle, but significant rotation of FN1 relative to FN2 (Figure 1c).

Interestingly, the receptor in complex with the sAB more closely resembles the hGH-bound form than the PRL-bound form [4] (Figure 1d). By aligning the FN1 domains of all three structures, the FN2 of the sAB-bound form and the hGH-bound form align well, while the FN2 of the PRL-bound is offset from the other 2 structures (Figure 1d). This observation implies that the sAB would have a greater impact on PRL binding than hGH binding. To test this, we examined the ability of each hormone to inhibit sAB binding to the receptor using a phage ELISA. In this experiment, the biotinylated receptor was immobilized on streptavidin plates and incubated with increasing concentrations of either hGH or PRL in the presence of phage displaying sAB A8, A9 or A10. By detecting the relative amount of phage bound to the receptor at each hormone concentration, IC_{50} values for each hormone-sAB combination were determined (Figure 1e). Although hGH has a higher affinity for the receptor ($K_d \sim 1nM$) [6] than PRL ($K_d \sim 6nM$) [2], the IC_{50} values for hGH were ~ 5 fold higher than those for PRL (Figure 1f). This indicates that PRL has a more profound inhibitory effect on sAB-receptor interaction than hGH, an observation that is consistent with structure alignments (Figure 1d). The results also suggest that all three sABs bind to the same epitope on the receptor, supported by basic epitope mapping using phage ELISA (Additional file 1: Figure S2).

We note that biological signaling requires the hormones to bind the ECD at both Site1 and the lower affinity Site2. Thus, it is possible that the sABs have an even more profound effect on ECD binding at Site2. Unfortunately, because of its more transient nature, it is not possible to quantitatively measure the influence of sABs on binding of the hormone at Site2. Thus, we instead quantified the effects using relevant biological readouts of the intracellular signaling mechanism mediated by the hPRL-R using T47D, a breast cancer cell-line. First, we examined the effects of sABs on hormone-induced receptor internalization, which is a ubiquitous feature of cytokine receptor activation. We tested the ability of the four sABs to block hPRL-R-mediated internalization of cy5-labeled hPRL or

Table 1 Binding kinetics and loop sequence of PRL-R sABs

sAB	k_{on} ($M^{-1} s^{-1}$) ^a	k_{off} (s^{-1}) ^a	K_D (nM) ^a	Loop sequence			
				L3 ^b	H1 ^b	H2 ^b	H3 ^b
A-4	No binding			HYTTPP	FYSSYI	YIYPSYGY	SYSSYGGWDYHNSSGAM
A-8	9.6×10^4	5.4×10^{-4}	5.6	YSSYYYPF	FSSSSM	YISPYGGS	SYGYVYWNAYSSGM
A-9	1.4×10^4	3.4×10^{-5}	2.5	YSSSYLL	FSSSSI	SIYSYSS	SYDSPWVWYSYTVSGAF
A-10	1.2×10^5	2.6×10^{-3}	21	HYTTPP	FSSSYI	SISPYGGS	SYYPPEETAf

^aBinding kinetics were determined by SPR on a Biacore 2000, dissociation constant was calculated from the on and off rates.

^bRandomized loops in the Fab scaffold, L3: light chain loop 3; H1, H2 and H3: heavy chain loop 1, 2 and 3, respectively.

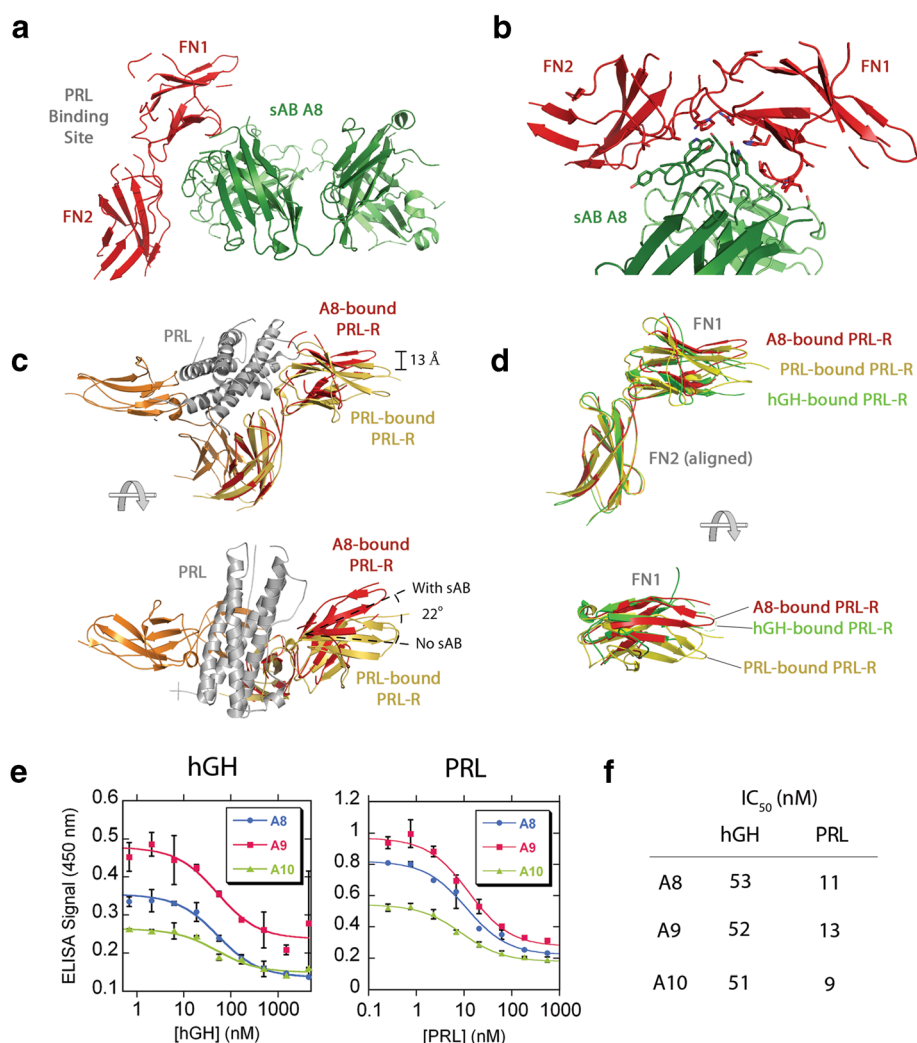


Figure 1 Crystal structure of the hPRL-R in complex with sAB A8. **a** sAB A8 (green) binds to the human PRL-R (red) opposite to the hormone binding site. **b** A close up of the interactions between the CDR loops of sAB A8 (green) and the hinge region between the two fibronectin (FN) domains of PRL-R (red). **c** Alignment of the FN2 domains of the PRL-R structure determined here (red) with the PRL-R structure (yellow) bound to PRL (grey) in the 2:1 complex (PDB code: 3NPZ), the side view (above) shows the twist between the two FN domains induced by sAB binding and the top view (below) shows a rotation of the FN1 domain relative to the FN2 domain in the sAB-bound structure. **d** Alignment of the sAB-bound PRL-R (red) with the hGH-bound PRL-R (green) and the PRL-bound PRL-R (yellow) using the FN2. The bottom panel is a top view of the FN1 of all three structures, with the sAB-bound receptor more resembling the hGH-bound conformation. **e** Inhibition of sAB binding by hGH or PRL using phage ELISA. Both hGH (left panel) and PRL (right panel) inhibit the interaction between phage-displayed sABs and hPRL-R in a concentration dependent manner. **f** IC₅₀ values of the hGH or PRL inhibition of the interaction between sABs and hPRL-R calculated from **e**.

hGH. Fluorescence microscopy indicated that sABs A8, A9 and A10 significantly decreased or completely abolished the internalization of hPRL, whereas the control sAB A4 had no effect on hormone internalization (Figure 2a). In contrast, internalization of hGH was only slightly inhibited by sABs A8, A9 and A10 (Figure 2b), presumably due to the ability of the sABs to recognize the conformation differences between the hPRL and hGH bound forms of hPRL-R.

We next examined the concentration and time-dependent effects of the sABs on hPRL-R signaling. A luciferase reporter assay [12] revealed that sABs A8,

A9 and A10 exhibit a concentration-dependent inhibition of downstream Stat5 phosphorylation, whereas the control sAB A4 showed no significant effect (Figure 2c). The inhibition of hPRL-R signaling by these three sABs was confirmed by western blot analysis of the downstream components of the prolactin induced signaling pathway (Figure 2d). These sABs drastically inhibited Stat5 and ERK phosphorylation, and partially inhibited AKT phosphorylation. Additionally, inhibition of signaling is correlated with the affinity of each sAB for the receptor.

The structural information gained from the A8-hPRL-R complex reveals the mechanism by which the sAB

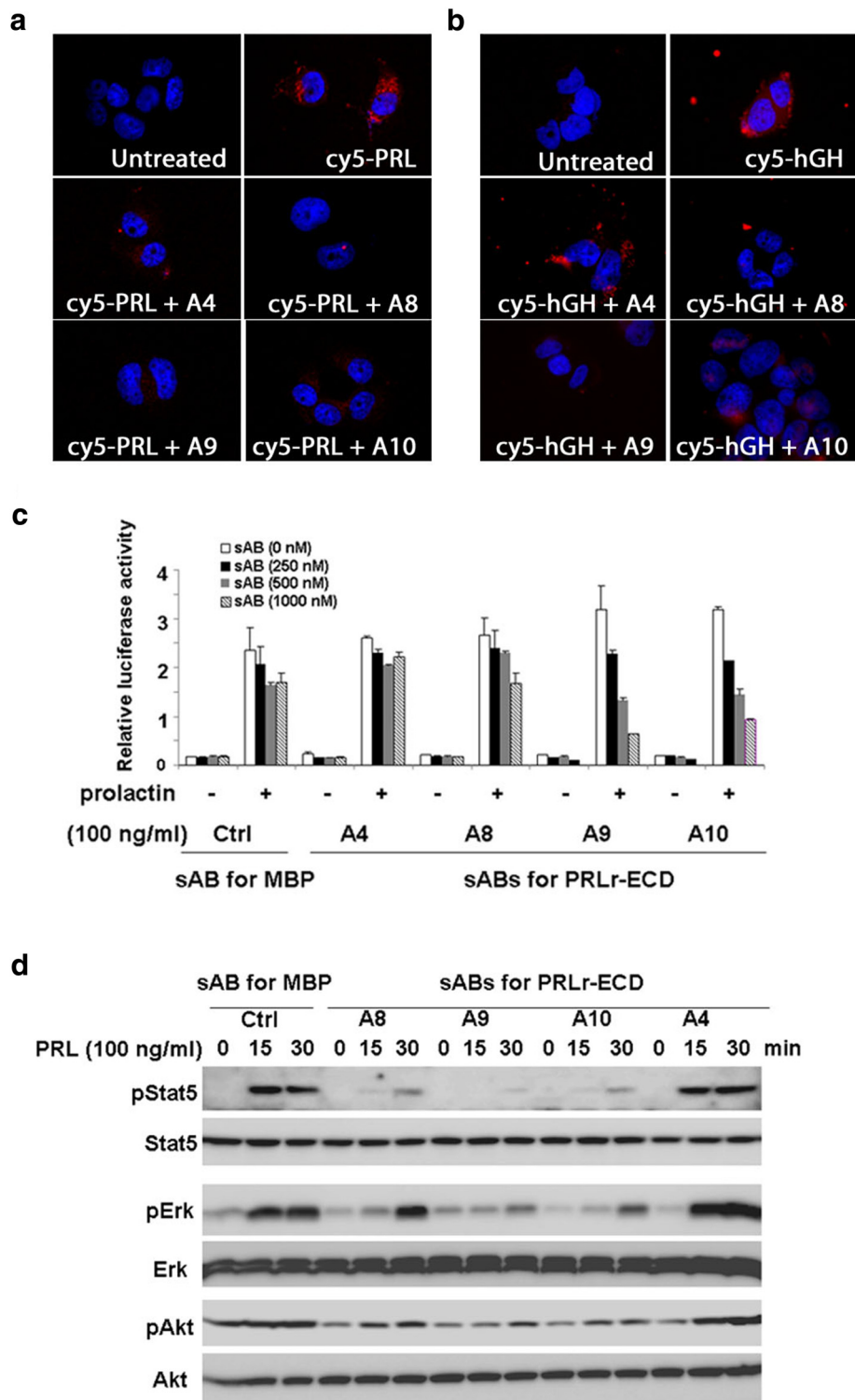


Figure 2 sAB inhibition of hPRL-R in T47D breast cancer cells. **a-b** Fluorescence microscopy images of cells treated with 100 nM cy5-hPRL (**a**) or cy5-hGH (**b**) in the presence of each sAB. All panels represent two merged channels; blue: DAPI nuclear stain, red: cy5. **c** A Stat5 phosphorylation luciferase reporter assay of T47D cells in the presence or absence of hPRL and hPRL-R sABs. A sAB against bacterial maltose binding protein (MBP) [7] was used as a negative control. **d** Western blot detection of the time-dependent inhibition of hPRL-R signaling by hPRL-R sABs.

functions as an allosteric antagonist of PRL activity. The ability of a number of cytokine receptors, including hPRL-R, to bind to multiple ligands, which manifest in different biological responses, brings about important questions relating subtle changes in receptor conformation on the cell-surface to downstream effects inside the cell. Our work indicates that sABs can distinguish between such subtle differences in receptor structure, *i.e.* hGH-bound vs. hPRL-bound, that ultimately define the function of the receptor. Therefore, the ability to utilize phage display to rationally engineer sophisticated reagents as highly selective inhibitors with defined behavior can serve as a powerful approach to investigate the diversity of structural states of cell-surface receptors and to design new drugs.

Additional file

Additional file 1: Supplementary information.

Abbreviations

sAB: Synthetic antibodies; hPRL-R: Human prolactin receptor; hPRL: Human prolactin; hGH: Human growth hormone; SPR: Surface Plasmon Resonance; FN: Fibronectin.

Competing interests

The authors declare that they have no competing interests.

Authors' contributions

JLK & AS generated the sABs and characterized their affinities for PRL-R. SSR and JZ characterized the effects of sABs on signaling. AAK and CVC conceived of and supervised the project. EMD and SM solved the crystal structure. SSR and AAK wrote the manuscript. All authors read and approved the final manuscript.

Acknowledgements

This work was funded by the following grants: U01GM09455, R01GM072688 and the Chicago Biomedical Consortium. SSR was funded by F32DK080619. Use of the Advanced Photon Source was supported by the U. S. Department of Energy, Office of Science, Office of Basic Energy Sciences, under Contract No. DE-AC02-06CH11357. Use of the LS-CAT Sector 21 was supported by the Michigan Economic Development Corporation and the Michigan Technology Tri-Corridor for the support of this research program (Grant 085P1000817).

Author details

¹Department of Biochemistry and Molecular Biology, The University of Chicago, Chicago, IL, USA. ²Current Address: Boler –Parseghian Center for Rare and Neglected Diseases, University of Notre Dame, Notre Dame, IN, USA. ³Current Address: Monsanto Co. 700 Chesterfield Parkway, Chesterfield, MO, USA. ⁴Current Address: Max Delbrueck Center for Molecular Medicine, Berlin, Germany. ⁵Department of Pathology, Northwestern University, Chicago, IL, USA. ⁶Current Address: Department of Pathology, Virginia Commonwealth University, Richmond, VA, USA.

Received: 9 October 2014 Accepted: 17 December 2014

Published online: 15 January 2015

References

1. Krieger M, Stern DM. Series introduction: multiligand receptors and human disease. *J Clin Invest*. 2001;108:645–7.
2. Broutin I, Jomain JB, Tallet E, van Agthoven J, Raynal B, Hoos S, et al. Crystal structure of an affinity-matured prolactin complexed to its dimerized receptor reveals the topology of hormone binding site 2. *J Biol Chem*. 2010;285:8422–33.
3. Clevenger CV, Gadd SL, Zheng J. New mechanisms for PRLr action in breast cancer. *Trends Endocrinol Metab*. 2009;20:223–9.

4. Somers W, Ultsch M, De Vos AM, Kossiakoff AA. The X-ray structure of a growth hormone-prolactin receptor complex. *Nature*. 1994;372:478–81.
5. Cunningham BC, Bass S, Fuh G, Wells JA. Zinc mediation of the binding of human growth hormone to the human prolactin receptor. *Science*. 1990;250:1709–12.
6. Walsh ST, Kossiakoff AA. Crystal structure and site 1 binding energetics of human placental lactogen. *J Mol Biol*. 2006;358:773–84.
7. Rizk SS, Paduch M, Heithaus JH, Duguid EM, Sandstrom A, Kossiakoff AA. Allosteric control of ligand-binding affinity using engineered conformation-specific effector proteins. *Nat Struct Mol Biol*. 2011;18:437–42.
8. van Agthoven J, Zhang C, Tallet E, Raynal B, Hoos S, Baron B, England P, Goffin V, Broutin I. Structural characterization of the stem-stem dimerization interface between prolactin receptor chains complexed with the natural hormone. *J Mol Biol*. 2010;404:112–126.
9. Clevenger CV, Furth PA, Hankinson SE, Schuler LA. The role of prolactin in mammary carcinoma. *Endocr Rev*. 2003;24:1–27.
10. Otte JM, Otte C, Beckedorf S, Schmitz F, Vonderhaar BK, Folsch UR, et al. Expression of functional prolactin and its receptor in human colorectal cancer. *Int J Colorectal Dis*. 2003;18:86–94.
11. Fellouse FA, Esaki K, Birtalan S, Raptis D, Cancasci VJ, Koide A, et al. High-throughput generation of synthetic antibodies from highly functional minimalist phage-displayed libraries. *J Mol Biol*. 2007;373:924–40.
12. Fang F, Antico G, Zheng J, Clevenger CV. Quantification of PRL/Stat5 signaling with a novel pGL4-CISH reporter. *BMC Biotechnol*. 2008;8:11.

Submit your next manuscript to BioMed Central and take full advantage of:

- Convenient online submission
- Thorough peer review
- No space constraints or color figure charges
- Immediate publication on acceptance
- Inclusion in PubMed, CAS, Scopus and Google Scholar
- Research which is freely available for redistribution

Submit your manuscript at
www.biomedcentral.com/submit

