

PETROLEUM WELL DATA LABELS

Petroleum well data labels, displayed to the upper right of the petroleum wells on this map, represent the total depth of the associated well. In densely drilled areas, it is not possible to pose well data labels for all wells present because the labels would overlap well symbols and other labels, making the map unreadable. For a more complete representation of well data in such areas, the Indiana Geological and Water Survey (IGWS) provides Petroleum Well Location Maps at larger scales.

ACCURACY OF WELL LOCATIONS

Local coordinates of wells contained within the IGWS's Petroleum Database Management System (PDMS) and their corresponding locations as shown on maps are believed to be reasonably accurate when portrayed on a scale of 1 inch to 1 mile. Although the coordinates for a great many locations in the database have been very accurately determined, past practices and inherent limitations on the accuracy with which a well was spotted on a 1:24,000-scale USGS topographic map have resulted in well coordinates that locate wells a small distance from their actual locations. Depending on circumstances, this distance could be as great as 100 feet, or rarely, somewhat more. In general, such locations are sufficiently accurate for most petroleum exploration and field mapping purposes. Additionally, it is important to note that new and revised data continually are being entered into the PDMS and, despite the use of careful procedures and proofing of the entered data, human error always remains a possibility. Every effort is made to correct errors and discrepancies whenever they are identified, but it is the responsibility of the user to verify any information to the extent it is deemed important.

DATA AVAILABILITY

Paper copies, as well as digital Adobe Acrobat formats, are available for purchase through the Publications Sales Office of the IGWS, Indiana University. Larger-scale maps, optionally showing additional well information may also be obtained from the IGWS. Availability may depend on the current status of information contained in the IGWS's Petroleum Database Management System. Prices for larger-scale maps vary depending on the amount of custom preparation needed to produce the map.

GENERAL DISCLAIMER

This map was compiled by the IGWS, Indiana University, using data believed to be accurate; however, a margin of error is inherent in all maps. This map is distributed "AS-IS" without warranties of any kind, either expressed or implied, including but not limited to warranties of suitability of a particular purpose or use. There is no attempt in either the design or production of this map to define the jurisdiction of any federal, state, or local government. This map is intended for use only at the scale of 1:63,360 or smaller.

The information on these media is proprietary to Indiana University, Indiana Geological and Water Survey. Any copying, distribution, public performance, or public display of this information without the express written consent of Indiana University, Indiana Geological Survey is discouraged.

This map was compiled by Indiana University, Indiana Geological and Water Survey, using data believed to be accurate; however, a degree of error is inherent in all data. This product is distributed "AS-IS" without warranties of any kind, either expressed or implied, including but not limited to warranties of suitability to a particular purpose or use. No attempt has been made in either the design or production of these data to define the limits or jurisdiction of any federal, state, or local government. These data are intended for use only at the published scale or smaller and are for reference purposes only. They are not to be construed as a legal document or survey instrument. A detailed on-the-ground survey and historical analysis of a single site may differ from these data.

LIMITATION OF WARRANTIES AND LIABILITY: Except for the expressed warranty above, the product is provided "AS-IS" without any other warranties or conditions, expressed or implied, including, but not limited to, warranties for product quality, or suitability to a particular purpose or use. The risk of liability resulting from the use of this product is assumed by the user. Indiana University, Indiana Geological and Water Survey shares no liability with product users indirect, incidental, special, or consequential damages whatsoever, including, but not limited to, loss of revenue or profit, loss or damaged data or other commercial or economic loss. Indiana University, Indiana Geological Survey is not responsible for claims by a third party. The maximum aggregate liability to the original purchaser shall not exceed the amount paid by you for the product.

CARTOGRAPHIC INFORMATION

Digital cartography by Matthew R. Johnson.
Base map features digitized from U.S. Geological Survey topographic quadrangle maps; scale 1:24,000.
Projection: Universal Transverse Mercator (UTM), Zone 16.
Horizontal Datum: North American Datum of 1983 (NAD83).
Well locations from the IGWS's Petroleum Database Management System, revised January 2020.
Pipeline data from the Indiana Geological Survey's County Pipeline Work Maps, revised 1988 (intended scale 1:63,360 or smaller).

PETROLEUM WELL SYMBOLS

The following symbols include all of the primary petroleum well symbols used by the Indiana Geological Survey. These symbols may be modified using the five modifiers listed below to provide additional information about the status or source data for a particular well. This list may include symbols not shown on this particular map.

- permitted location
- ◇ dry hole
- oil
- ⊛ gas
- ⊛ oil and gas
- ⊛ gas storage
- ⊛ gas storage formerly oil
- ⊛ gas storage formerly gas
- ⊛ water injection (waterflood)
- ⊛ water injection formerly oil
- ⊛ water injection formerly gas
- ⊛ water injection formerly oil and gas
- observation
- ⊛ observation and/or formerly gas
- ⊛ observation formerly gas storage
- ⊛ salt water disposal
- ⊛ salt water disposal formerly oil
- ⊛ salt water disposal formerly gas
- ⊛ salt water disposal formerly gas storage
- ⊛ nonpotable water supply
- ⊛ nonpotable water supply formerly oil
- ⊛ nonpotable water supply formerly gas
- ⊛ waste disposal
- ⊛ temporarily abandoned new well
- ⊛ confidential well
- ⊛ boring
- ⊛ stratigraphic/structure test
- ⊛ surface location of deviated hole
- ⊛ point along the path of a deviated hole
- ⊛ nothing known, old Trenton well from map

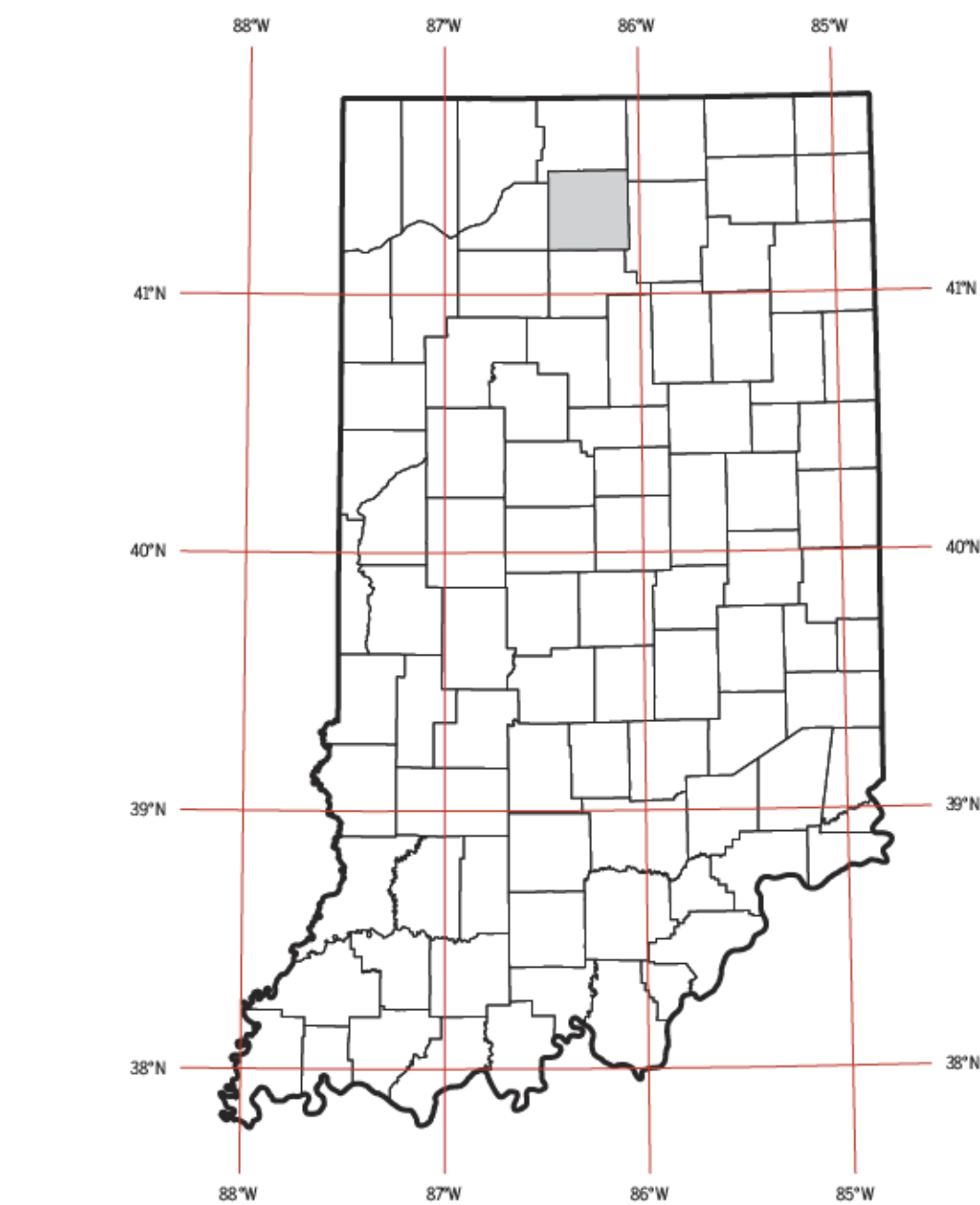
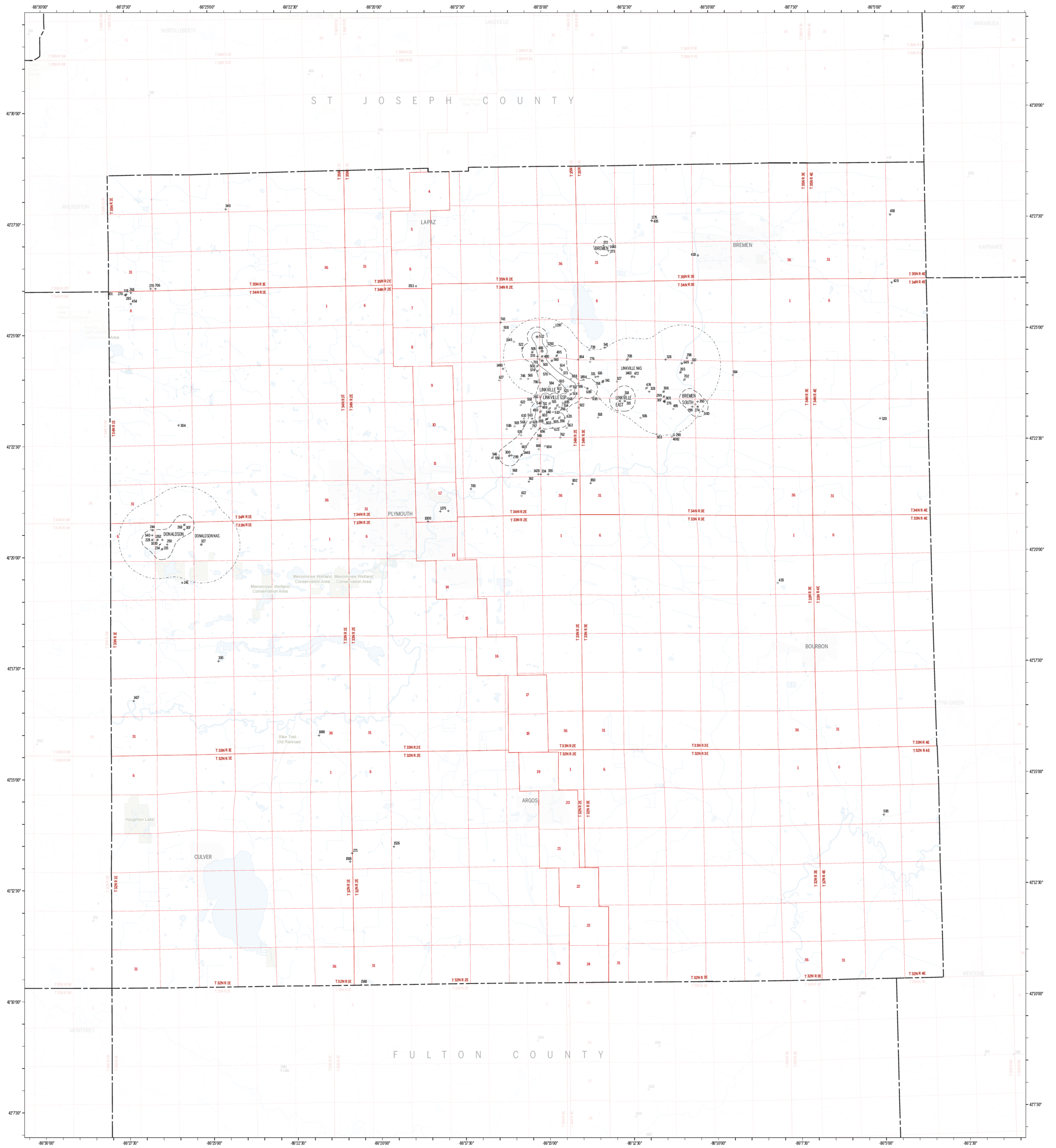
SYMBOL MODIFIERS

Modifiers (shown here in red for clarity) may be added to any standard IGWS well symbol to denote the following five criteria:

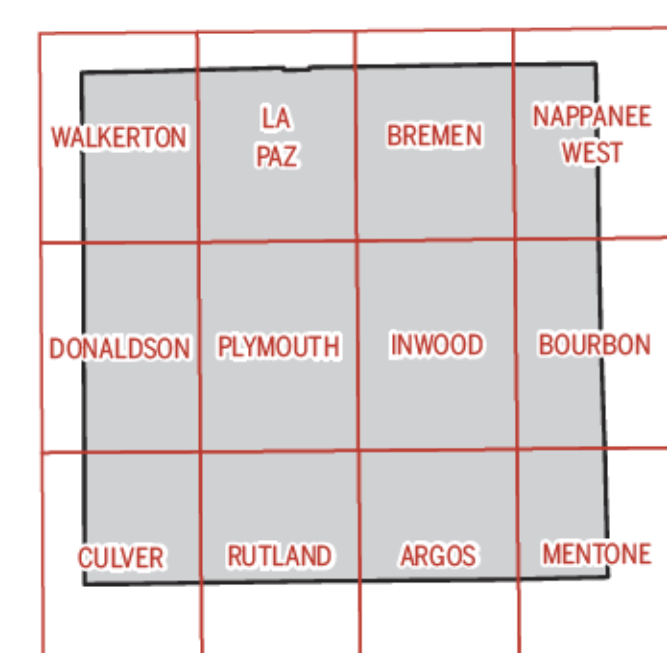
- ⊛ abandoned
- ⊛ completion type uncertain
- ⊛ location uncertain
- ⊛ temporarily abandoned
- ⊛ dually completed

FIELD BOUNDARY SYMBOLS

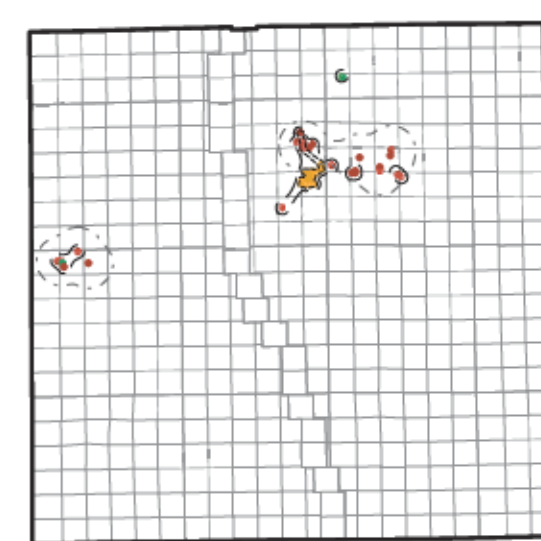
- Gas storage project boundary; encloses wells classified in a single gas storage project, but is not intended to indicate the extent of the gas storage reservoir.
- Petroleum field boundary; encloses wells classified in a single field, but is not intended to indicate the extent of producing reservoirs.
- New Albany Shale (NAS) gas field boundary; encloses wells classified in a single NAS field, but is not intended to indicate the extent of producing reservoirs.



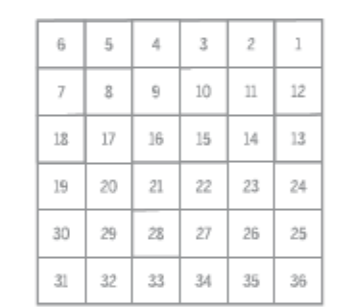
Index map of Indiana showing the location of Marshall County.



Index map of Marshall County showing U.S. Geological Survey 7 1/2-minute topographic quadrangle map names.



Index map of Marshall County showing petroleum field boundaries, gas, and gas storage areas.



General diagram of Congressional Township showing numbered sections. Ideal sections are 1 mile by 1 mile squares.



APPROPRIATE NEAR INDICATED MAP 1981

