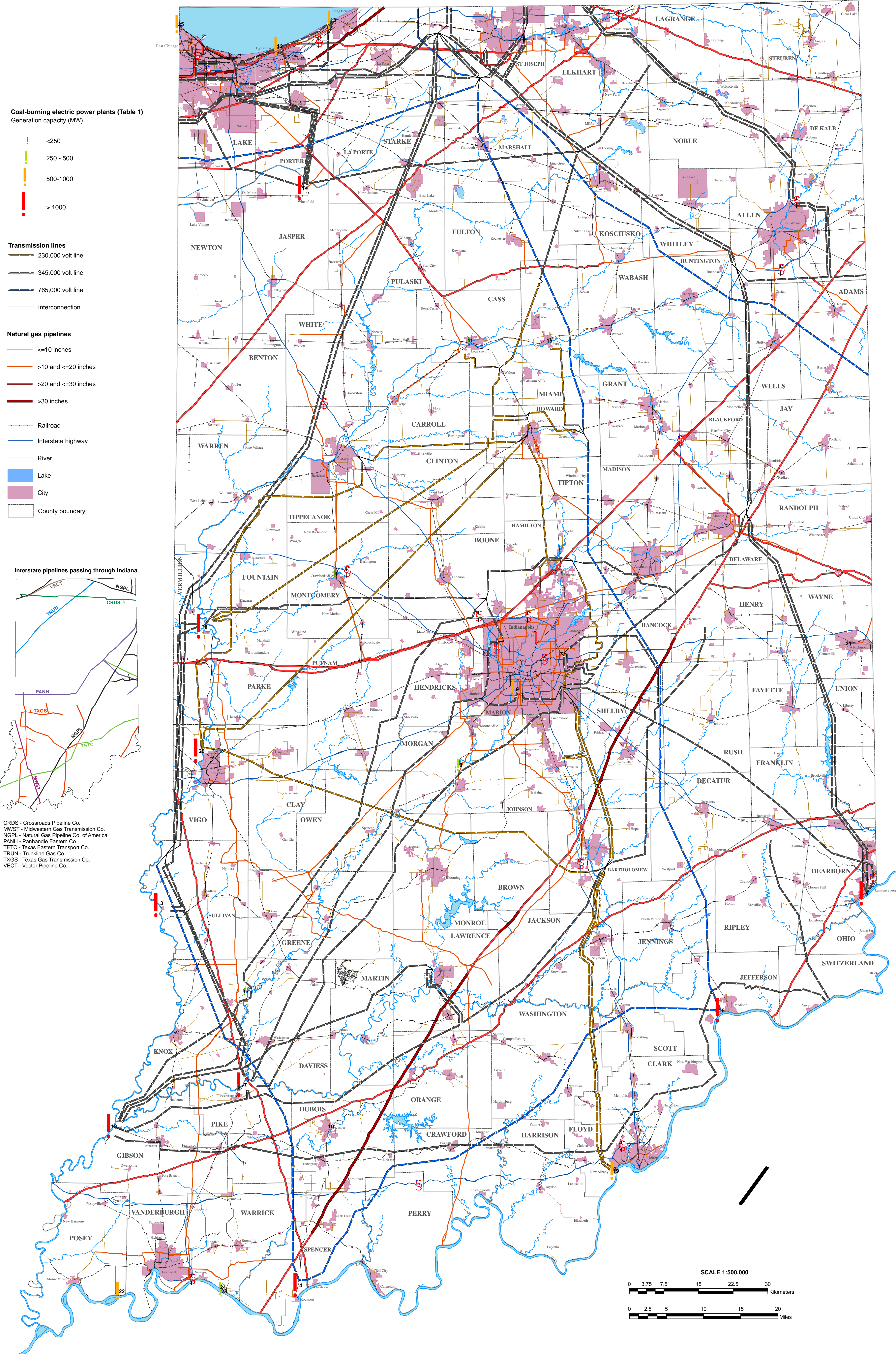


COAL, ELECTRICITY, AND GAS TRANSPORTATION SYSTEMS IN INDIANA

Compiled by Agnieszka Drobnik, Maria Mastalerz and Kathryn Shaffer
May 2006

ELECTRICITY TRANSMISSION LINES AND NATURAL GAS PIPELINES



SURFACE AND UNDERGROUND COAL MINES

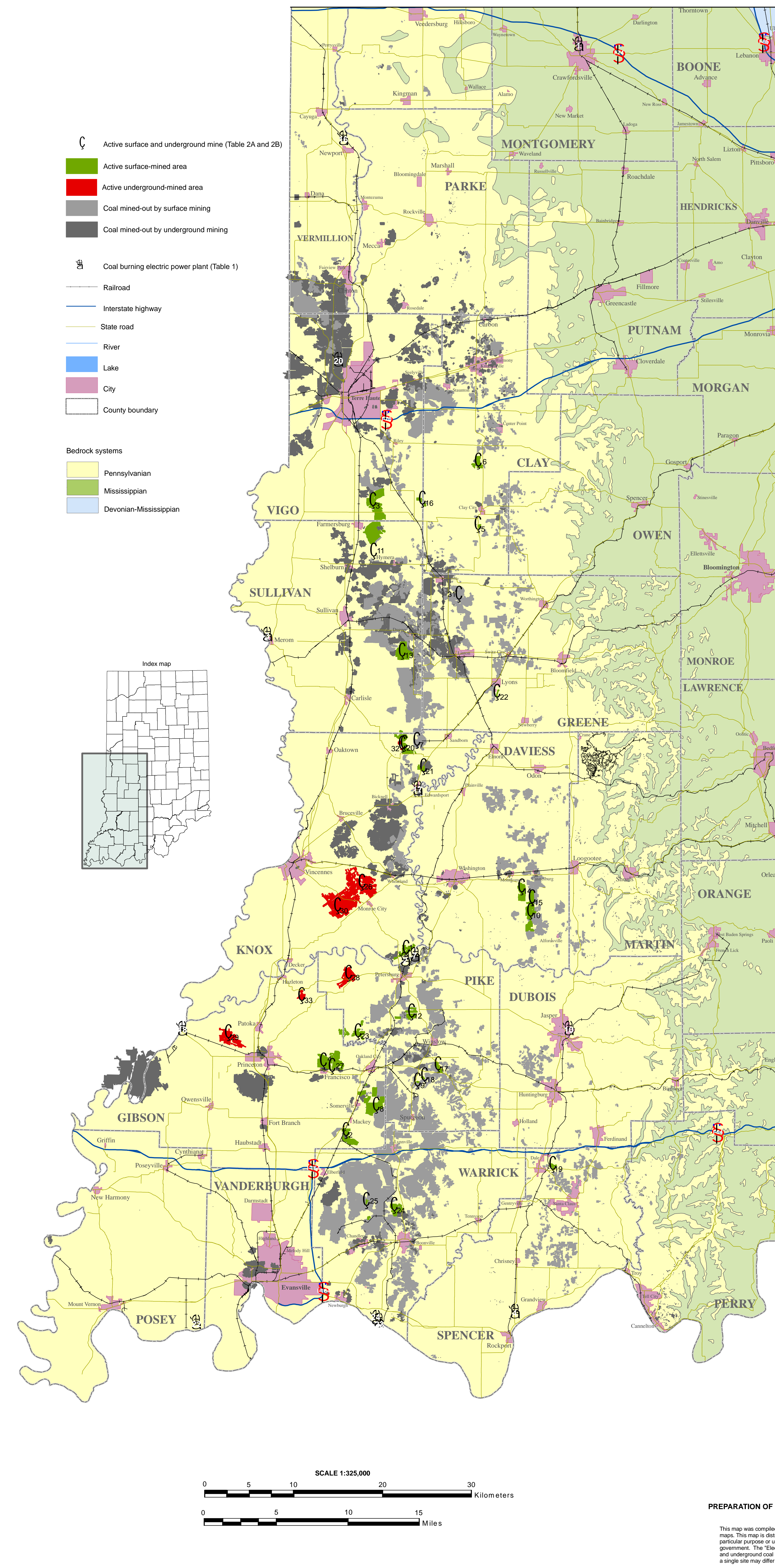


Table 1. Investor-owned, cooperative, and municipal coal-burning electric power plants

ID	Company	Plant Name ¹	County	Generation Capacity (MW) ²
1	Crawfordsville Electric Light & Power Co.	Crawfordsville	Montgomery	25
2	Hoosier Energy R E C Inc.	Frank E. Ratts	Pike	234
3	Monon	Monon	Sullivan	1,080
4	Indiana Michigan Power Co.	Rockport	Spencer	2,600
5	Indiana Michigan Power Co.	Tarboro Creek	DuWan	1,501
6	Indiana Michigan Power & Light Co.	City Creek	Jefferson	1,304
7	Indianapolis Power & Light Co.	Petersburg	Pike	1,873
8	Edgemoor Valley (Formerly Princeton)	Edgemoor	Morgan	302
9	Harding Street (Formerly Elmer W. Stout)	Harding Street	Mason	698
10	City of Jasper	Jasper	Dubois	15
11	City of Logansport	Logansport	Cass	43
12	Northern Indiana Public Service Co.	Billy	Porter	616
13	Michigan City	Michigan City	La Porte	540
14	R. M. Schaefer	R. M. Schaefer	Jasper	1,544
15	City of Peru	Peru	Miami	35
16	PSI Energy Inc.	Chicago	Vermillion	1,002
17	Edwardsport	Edwardsport	Knox	110
18	Gilson	Gilson	Greene	3,340
19	R. Gallagher	R. Gallagher	Floyd	600
20	Washington River	Washington River	Vigo	1,165
21	City of Richmond	Richmond	Wayne	94
22	Southern Indiana Gas & Electric Co.	A. B. Brown	Posey	531
23	Southern Indiana Gas & Electric Co. and Alcoa Generating Corp.	F. B. Culley	Warrick	415
24	Southern Indiana Gas & Electric Co. and Alcoa Generating Corp.	Warrick	Warrick	742
25	State Line Energy LLC	State Line	Lake	613

¹ Source: U.S. DOE, U.S. Energy Research Administration (FERAC). Existing generating plants as of January 1, 2005.
² MW value (MW) value includes coal burning units, but not units burning other fuels as they are not main steam units published elsewhere.

Table 2A. Active surface mines in Indiana as of February 2006

ID	Company	Surface Mine Name	County	Year opened
1	B. B. Mining, Inc.	Proa ¹	Knox	1996
2	Black Beauty Coal Company	Discovery #1, Somerville South Pt	Gibson	1993
3	Farmersburg #1, South Pt	Farmersburg #1, South Pt	Sullivan, Vigo	1996
4	Miller Creek, Sugar Ridge ²	Miller Creek, Sugar Ridge ²	Clay	1996
5	Miller Creek, Jervis Pt	Miller Creek, Jervis Pt	Clay	2002
6	Miller Creek, Knox Pt	Miller Creek, Knox Pt	Clay	2001
7	Somerville #1, Somerville Central	Somerville #1, Somerville Central	Gibson	1996
8	Somerville East	Somerville East	Pike	1996
9	Viking, Corning Pt	Viking, Corning Pt	Daviess	1995
10	Coal Field Development Company	Herricks Mine	Sullivan	2005
11	Kindell Mining, Inc.	Kindell #2, White Church Pt ³	Pike	1974
12	Kindell #3, Parvinsiana Pt ³	Kindell #3, Parvinsiana Pt ³	Sullivan	1967
13	Solar Sources, Inc.	Carrollburg	Daviess	1978
14	Carrollburg, Molloy #1 Pt ⁴	Carrollburg, Molloy #1 Pt ⁴	Clay, Vigo	2001
15	Levis	Levis	Clay, Vigo	2001
16	Triad Mining, Inc.	Augusta South	Pike	2002
17	Augusta South	Augusta South	Pike	2000
18	Francisco	Francisco	Spencer	1996
19	Francisco, East Pt	Francisco, East Pt	Knox	1996
20	Francisco, East Pt	Francisco, East Pt	Knox	1996
21	Lyons	Lyons	Greene	2000
22	Parsons River	Parsons River	Gibson, Pike	1996
23	Vigo Coal Company, Inc.	Cypress Creek	Warrick	1998
24	Rangeline ⁵	Rangeline ⁵	Warrick	2002

Table 2B. Active underground mines in Indiana as of February 2006

ID	Company	Underground Mine Name	County	Year opened
1	Black Beauty Coal Company	Air Quality ⁶	Knox	1993
2	Francisco Underground	Francisco Underground	Gibson	2003
3	Five Star Mining, Inc.	Francisco	Pike	2000
4	Gibson County Coal, LLC	Gibson County	Gibson	2000
5	Solar Sources, Inc.	Monroe City	Knox	1994
6	Sunrise Coal, LLC	Wheatville	Greene	2005
7	Triad Mining, Inc.	Francisco Underground	Knox	2001
8	White River Coal, Inc.	Haddock	Gibson	2002

¹ Mine.
² In operation.
³ Currently inactive but expected to resume production in mid to late 2006.
⁴ Currently inactive but expected to resume production in mid to late 2006.
⁵ Inactive underground mines.
⁶ Inactive underground mines.

INDIANA GEOLOGICAL SURVEY
OPEN-FILE STUDY 06-03

For further information contact:
INDIANA GEOLOGICAL SURVEY
811 North Walnut Grove
Bloomington, IN 47405
<http://igs.indiana.edu>
(812) 855-7636
IGSinfo@indiana.edu

PREPARATION OF THIS MAP WAS FUNDED BY THE INDIANA CENTER FOR COAL TECHNOLOGY RESEARCH

This map was compiled by Indiana University, Indiana Geological Survey, using data believed to be accurate; however, a margin of error is inherent in all maps. This map is distributed "AS-IS" without warranty of any kind, other expressed or implied, including but not limited to warranty of suitability of a particular purpose or use. There is no attempt in either the design or production of this map to define the jurisdiction of any federal, state, or local government. The "Electricity transmission lines and natural gas pipelines" map is intended for use only at the published scale of 1:500,000. The "Surface and underground coal mines" map is intended for use only at the published scale of 1:325,000. A disclaimer on the ground survey and treatment analysis of a single site may differ from this map.

Transmission lines modified after Indiana Electric Association, June 1, 1990.