

EXPLANATION

UNCONSOLIDATED DEPOSITS

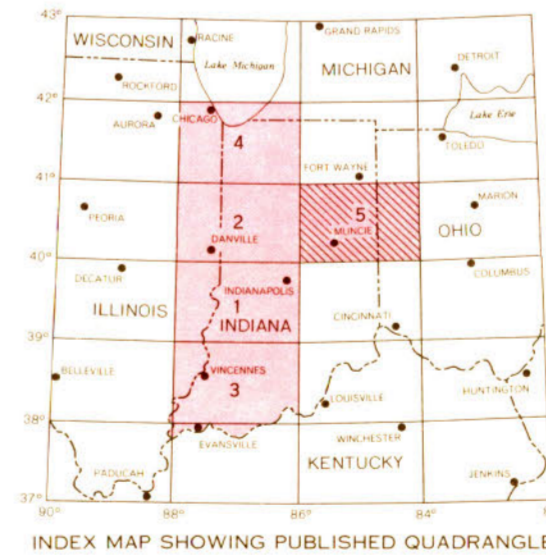
- Recent**
- Quaternary (Pleistocene)**
- Wisconsinan**
- Illinoian**
- Devonian**
- Silurian**
- Ordovician**

BEDROCK UNITS

- Devonian**
- Silurian**
- Ordovician**

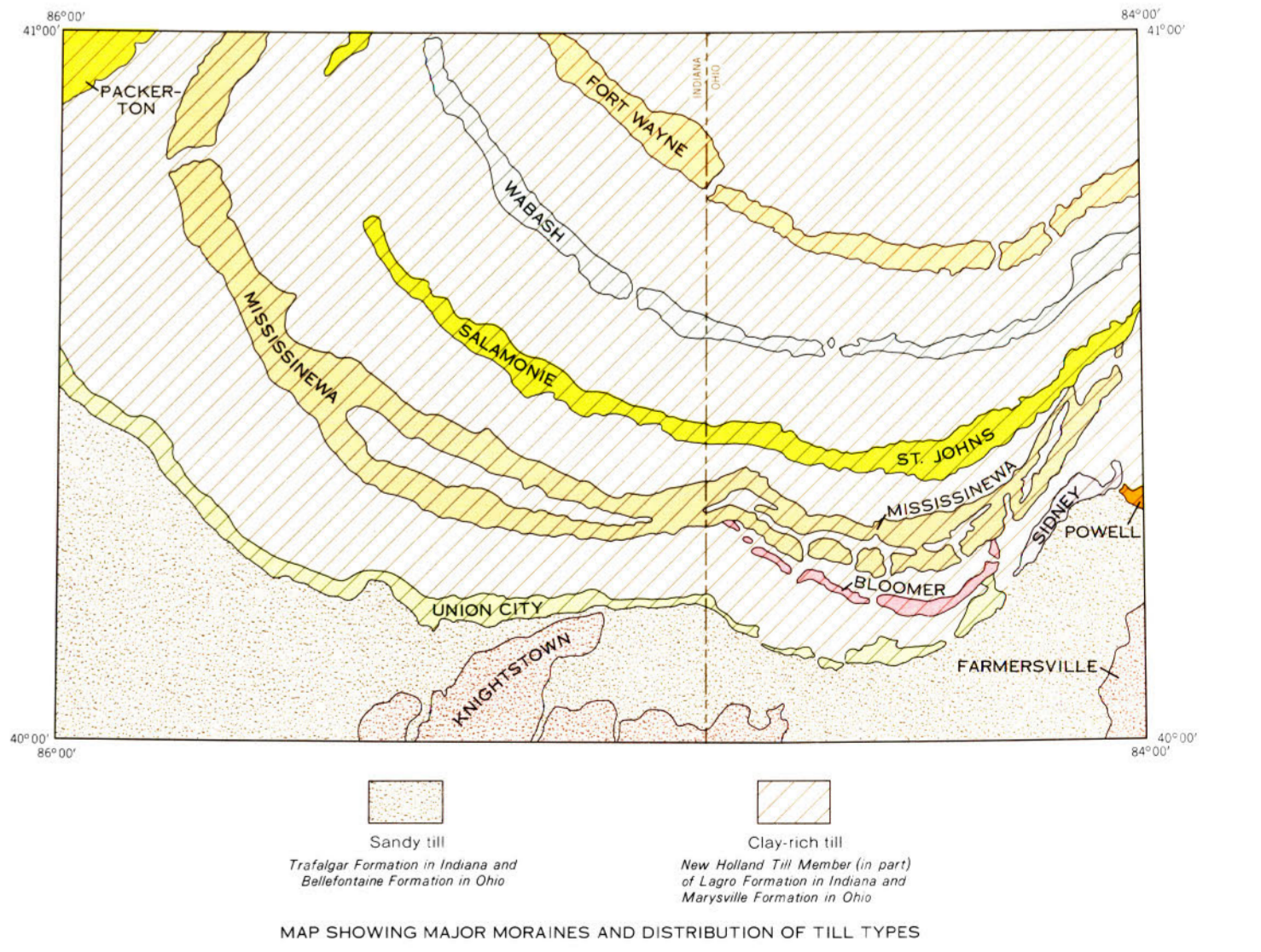
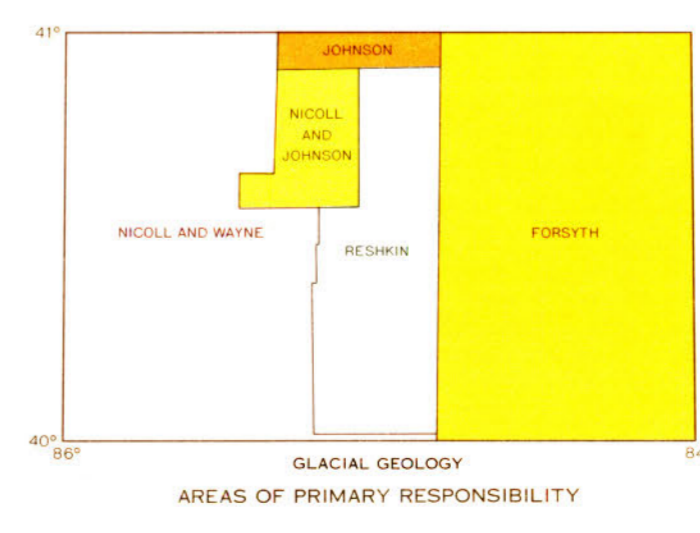
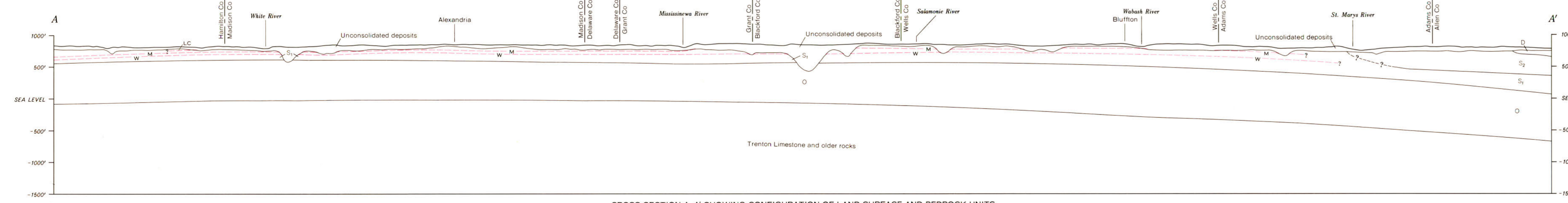
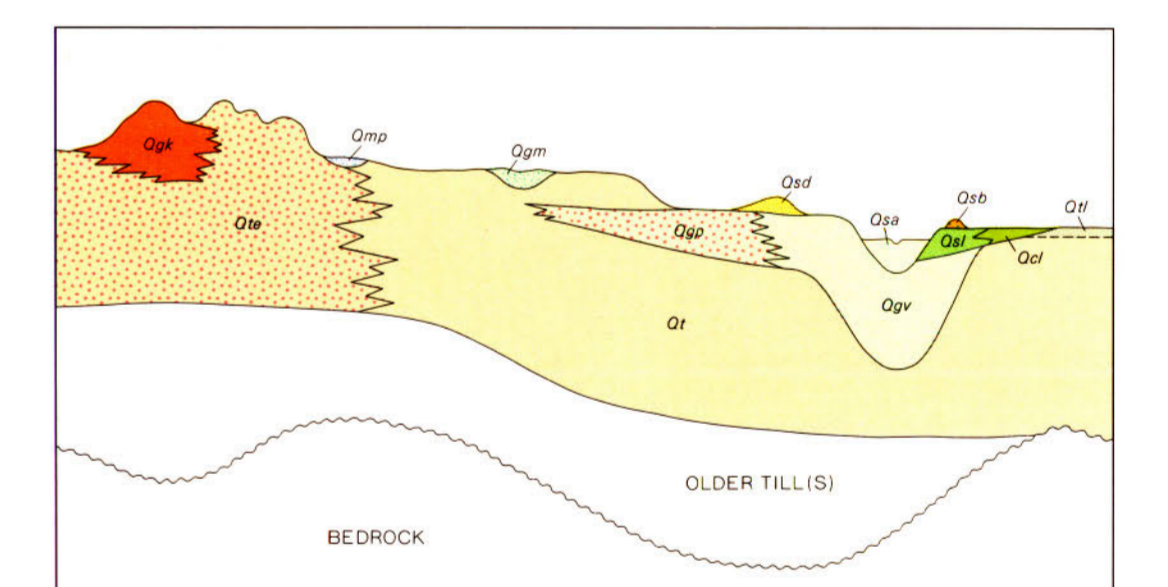


Scale 1:250,000
TRANSVERSE MERCATOR PROJECTION
NOTE: In addition to the complete geologic map of this quadrangle, which shows both bedrock and unconsolidated deposits, separate parts depicting the two main elements of the area geology are available. Part A shows only bedrock; Part B shows only unconsolidated deposits. The supplantation, columnar and cross sections, and marginal information are the same on the separate parts as on the complete map.



COLUMNAR SECTION SHOWING BEDROCK UNITS

PERIOD	EPOCH	MAP UNIT	THICKNESS (FEET)	LITHOLOGY	ROCK UNIT		
					SIGNIFICANT MEMBER	FORMATION	NAMES USED IN OHIO
DEVONIAN	CAYUGAN	D	50+		Jeffersonville Ls.	Detroit River Fm.	Detroit River Gr.
		Su	200 to 300		Salina Fm.		Greenfield Dol.
		LC			Liston Creek Ls.		
		W			Wabash Fm.		Guelph Dol.
SILURIAN	NIAGARAN	Su	250 to 600		Mississauga Sh.		
		LC			Louisville Ls.		
		W			Walden Fm.		
		O					
ORDOVICIAN	CINCINNATI	O	150+				Richmond Gr.
					Brassfield Ls.		Brassfield Fm.



GEOLOGIC MAP OF THE 1° x 2° MUNCIE QUADRANGLE, INDIANA AND OHIO, SHOWING BEDROCK AND UNCONSOLIDATED DEPOSITS

By Ann M. Burger, Jane L. Forsyth, Robert S. Nicoll, and William J. Wayne
1971

Geology compiled from original and published data. Bedrock geology compiled by A. M. Burger (Indiana Geological Survey and Smith College); Surficial geology compiled by J. L. Forsyth (Bowling Green State University), G. H. Johnson (Indiana Geological Survey and College of William and Mary), R. S. Nicoll (Indiana Geological Survey and University of Iowa), Mark Restkin (Indiana Geological Survey and Indiana University Northwest), and W. J. Wayne (Indiana Geological Survey and University of Nebraska). Drafted by Roger L. Purcell.