



GEOGRAPHIES OF DISRUPTION: MAPPING TO MAKE SENSE OF 2020'S SOCIOPOLITICAL UPHEAVAL

PART OF GIS DAY @ IU, NOVEMBER 16 - 20

**A PANEL WITH CHRISTY HYMAN, DR. HEIDI RAE COOLEY, TERRA GRAZIANI,
GIRMAYE MISGNA, DR. ERIK NELSON, AND DR. ARRIANNA PLANEY**

WELCOME TO GIS DAY @ IU!

**THANKS FOR
WATCHING!**

1

Indigenous Land
Acknowledgement

2

Geographies of Disruption
Panel Discussion

3

Schedule, Bios, Abstracts
go.iu.edu/gisday

4

Use **#GISDAY2020**
on Twitter!

GIS DAY @ IU SPONSORS



THE MEDIA SCHOOL
INDIANA UNIVERSITY



INFORMATION & LIBRARY SCIENCE
INDIANA UNIVERSITY



INDIANA UNIVERSITY
SCHOOL OF PUBLIC HEALTH



LIBRARIES



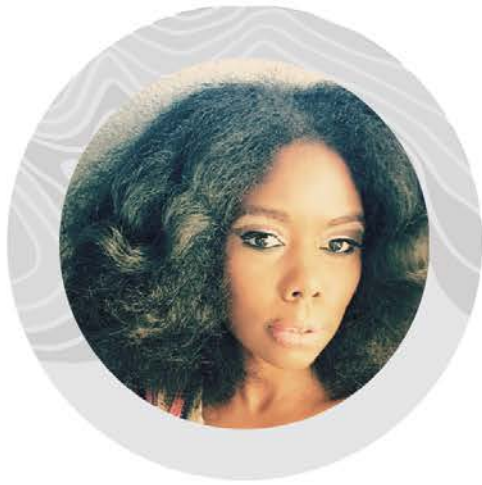
CULTURAL STUDIES PROGRAM
INDIANA UNIVERSITY



**GOVERNMENT INFORMATION, MAPS
AND MICROFORM SERVICES**



**THE INSTITUTE FOR
DIGITAL ARTS & HUMANITIES**



CHRISTY HYMAN, PHD STUDENT, UNIVERSITY OF NEBRASKA - LINCOLN

PANEL MODERATOR FOR “GEOGRAPHIES OF DISRUPTION”

Christy Hyman is a PhD student in the Program of Geography at the University of Nebraska Lincoln. She uses Critical GIS to observe to what extent digital mapping can inform us of the human experience while acknowledging phenomena deriving from oppressive systems in society threatening sustainable futures.



DR. ERIK NELSON

MON NOV 16 / 1 – 2 PM

PLACING ENVIRONMENTAL LEAD EXPOSURE
ON NOTICE



DR. ARRIANNA PLANEY

TUE NOV 17 / 1 – 2 PM

GIS AND SPATIAL THINKING FOR PUBLIC
HEALTH: POTENTIAL, PITFALLS, AND
CONSIDERATIONS



DR. HEIDI RAE COOLEY

WED NOV 18 / 1 – 2 PM

“SENSING” PLACE: HABIT CHANGE IN
THE MOBILE, CONNECTED PRESENT



TERRA GRAZIANI

THU NOV 19 / 3 – 4 PM

RESEARCH IN SOLIDARITY: DOCUMENTING
DISPOSSESSION AND RESISTANCE WITH
THE ANTI-EVICTION MAPPING PROJECT



GIRMAYE MISGNA

FRI NOV 20 / 1 – 2 PM

ASPECTS OF MAPPING AND GIS SERVICE
IN HIGHER EDUCATION LIBRARY

GEOGRAPHIES OF DISRUPTION: MAPPING TO MAKE SENSE OF 2020'S SOCIOPOLITICAL UPHEAVAL

How can critical approaches in GIS function in a “world deeply etched by processes of uneven geographical development and escalating environmental destruction?”

We explore this question among others alongside the insights highlighted in *Boundless Contamination and Progress in Geography* by Noel Castree, Louise Armoore, Alex Hughes, Nina Laurie, David Manley, and Susan Parnell.

source: Noel, C., Louise, A., Hughes, A., Laurie, N., Manley, D., & Parnell, S. (2020). Boundless contamination and progress in geography. *Progress in Human Geography*, 44(3), 411-414. [doi:http://dx.doi.org/10.1177/0309132520920094](http://dx.doi.org/10.1177/0309132520920094)

TOPICS OF DISCUSSION

- **political ecologies of disease and health**
- **classed, raced, gendered and aged vectors of spatial vulnerability**
- **multi-scale variables that shape life outcomes**
- **relationships between bodies and technologies**
- **housing insecurity and displacement**
- **data access**
- **geospatial librarianship**

THANK YOU FOR WATCHING!

INDIVIDUAL LECTURES, NOV 16 - 20



MON NOV 16 / 1 - 2 PM

DR. ERIK NELSON

PLACING ENVIRONMENTAL LEAD EXPOSURE
ON NOTICE



TUE NOV 17 / 1 - 2 PM

DR. ARRIANNA PLANEY

GIS AND SPATIAL THINKING FOR PUBLIC
HEALTH: POTENTIAL, PITFALLS, AND
CONSIDERATIONS



WED NOV 18 / 1 - 2 PM

DR. HEIDI RAE COOLEY

"SENSING" PLACE: HABIT CHANGE IN
THE MOBILE, CONNECTED PRESENT



THU NOV 19 / 3 - 4 PM

TERRA GRAZIANI

RESEARCH IN SOLIDARITY: DOCUMENTING
DISPOSSESSION AND RESISTANCE WITH
THE ANTI-EVICTION MAPPING PROJECT



FRI NOV 20 / 1 - 2 PM

GIRMAYE MISGNA

ASPECTS OF MAPPING AND GIS SERVICE
IN HIGHER EDUCATION LIBRARY