

In this issue:

- Today, October 23, 1-2:00 p.m. Eastern: Inclusive Practices and Software Project Productivity webinar
- Profile Spotlight: Corinne Adams
- CFP for a new affinity group: Next-Generation Data Centers
- 2025 Midwest RCD Annual Meeting save the date!
- Creating an Inclusive Work Environment Tip #2
- SC24 - many of the Midwest RCD institutions will have booths, plan to visit and say hello!

Midwest Research Computing and Data Consortium

Midwest RCD Newsletter

December 4, 2024

Help grow the Midwest RCD Consortium: forward this newsletter to your students and colleagues



Midwest RCD Profile Spotlight: Corinne Adams

Corinne Adams, Support Specialist from Advanced Research Computing at University of Michigan

Series: Exploring the Landscape of Midwest Research Computing and Data Consortium

This is a series where we're diving into the world of the Midwest Research Computing and Data Consortium, exploring its members, the challenges, and future prospects. We had the opportunity to speak with Corinne Adams, Support Specialist, who shared their insights on the field.

Corinne is a member of the Midwest RCD slack instance, contact them if you'd like to collaborate or learn more about their work.

[Read the interview with Corinne Adams](#) →

[Recommend a colleague for a Profile Spotlight interview](#) →

CALL FOR PARTICIPATION!

The newest Midwest RCD Consortium Affinity Group, Next-Generation Data Centers, is organizing a 1.5 day workshop on February 25-26, 2025 at IU Indianapolis Campus Center.

The Midwest RCD Consortium's Next-Generation Data Centers Workshop is a great opportunity to hear directly from data center architects, invited vendor subject matter experts sharing their data center futures and chip requirements roadmap, and stories from the trenches from prominent infrastructure leaders.

[Learn more and help us pick the topics!](#)

Midwest Research Computing and Data Consortium Annual Meeting



Save the date.

The 2025 Midwest RCD Consortium Annual meeting will be held April 14 - 15 at Case Western Reserve University in Cleveland, Ohio.

[Find out the details!](#)

TODAY! The HPC-workforce Action group and IDEAS Productivity project are sponsoring a Webinar, Inclusive Practices and Software Project Productivity, on October 23 from 1:00 to 2:00 p.m. EDT. The webinar is free, and all are welcome. It will cover inclusive practices that benefit any research or engineering team, but the examples will be drawn from computing and software development.

[Register Here](#)

Your affinity groups at work.

DEI/IWE Affinity Group: Creating an Inclusive Work Environment

Share these short, closed-captioned videos with your colleagues!

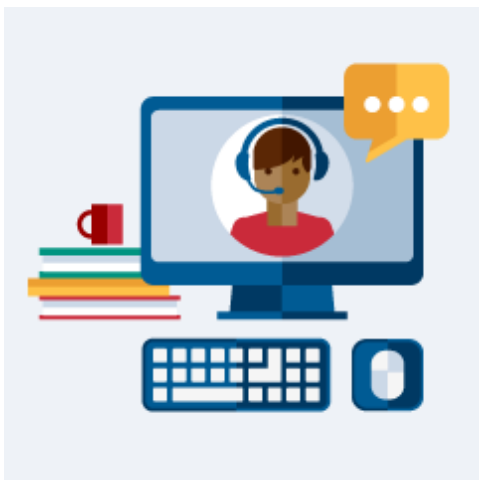
Inclusive diversity is the process of building inclusive work places by promoting collaboration, creativity, innovation, fairness, and respect in an environment where all employees believe they belong.

Tip #2

Try it Now - Tip #2!



Connect with the Midwest RCD



Office Hours with the Program Office at IU

Join us any Tuesday at 11 a.m. Eastern. No registration needed, just click on the Zoom link or use the add to calendar link.

[Add Tuesdays to calendar.](#) →

[Tuesdays at 11 a.m. Zoom.](#) →

[Join/Follow the new LinkedIn page](#)

New! - Next-Gen DC Affinity Group

The Next-Generation Data Center group focuses on learning about advancements in facilities and operations of data centers.

[Join the Next-Gen DC Affinity Group](#) →

DEI Affinity Group

We strive to build an inclusive and equitable culture which will promote and increase diversity. This group is being created to ensure that there is diversity in committees, events (annual meetings), and leadership positions.

[Join the DEI Affinity Group](#) →

ROI Affinity Group

This group focuses on approaches to gauging impact as well as quantitative and qualitative measures needed to communicate the benefits of investments in cyberinfrastructure on our campuses.

[Join the ROI Affinity Group](#) →

Scientific Cloud Affinity Group

This group focuses on how HPC centers approach cloud computing to support increasingly diverse scientific and engineering research and education endeavors and what skill sets CI professionals will need to support cloud workflows and data management.

[Join the Scientific Cloud Affinity Group](#) →

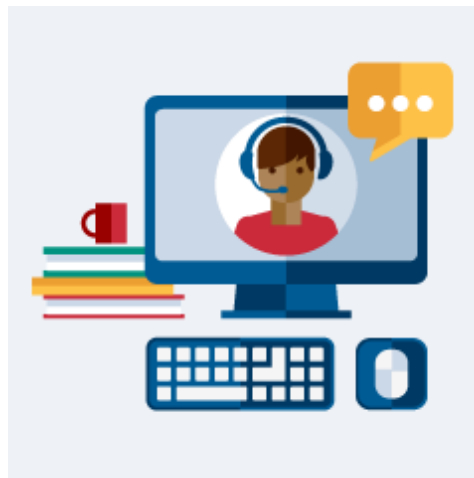
Connect with the Community

[Slack](#) | [Join Slack](#) →

[LinkedIn Group](#) | [Page](#) →

[Join Mailing List](#) →

[Forward this Email](#)



-->

Upcoming Related Events and Opportunities

Know an event to include here? [Submit your Midwest RCD-related event or opportunity.](#)

Various • Online submission

[ACCESS Events & Training](#)

ACCESS is an acronym that stands for “Advanced Cyberinfrastructure Coordination Ecosystem: Services & Support.” ACCESS is a program established and funded by the National Science Foundation (NSF) to help researchers and educators utilize the nation’s advanced computing systems and services. Almost any computer application that requires more than a desktop or laptop could qualify as needing an advanced computing system.

Sun-Fri, November 17-22 • Atlanta, GA

[The International Conference for High Performance Computing, Networking, Storage, and Analysis \(SC24\)](#)

The SC program is designed to share best practices in areas such as: algorithms; applications; architectures and networks; clouds and distributed computing; data analytics, visualization, and storage; machine learning and HPC; performance; programming systems; system software; and state of the practice in large-scale deployment and integration. **Late registration is still open!**

Tue-Wed, February 25-26 • Indianapolis, IN

[Next-Generation Data Center Workshop](#)

Plan to attend the inaugural Next-Gen DC workshop, a program of the Midwest RCD. Register your interest and topic priorities via the google doc on the workshop webpage.

Mon-Tue, April 14-15 • Case Western University | Hybrid

[Midwest RCD Annual Meeting](#)

Plan to join us at beautiful Case Western Reserve University in Cleveland, Ohio.



About the Midwest Research Computing and Data Consortium

Regional stakeholders working collectively in a trusted forum can shape the future by working collectively on topics of mutual interest, by onboarding organizations that find value in the mission of the organization, by sharing

information transparently, and by providing opportunities for CI professionals staff members in our organization to contribute, to be mentored, to belong to a cohort, and to become leaders.

[Read more about Midwest RCD](#) →



RCN:CIP: Midwest Research Computing and Data Consortium

This material is based upon work supported by the National Science Foundation under Grant No. 2227627. Any opinions, findings, and conclusions or recommendations expressed in this material are those of the authors and do not necessarily reflect the views of the National Science Foundation.

[NSF Award information](#) →

