
Midwest Research Computing and Data Consortium



Midwest RCD Newsletter

April 16, 2024

Help grow the Midwest RCD Consortium: forward this newsletter to your students and colleagues



Midwest RCD Profile Spotlight: Wyatt Madej

Wyatt Madej, Technical Architect at Manhattan College

Series: Exploring the Landscape of Midwest Research Computing and Data Consortium

This is a series where we're diving into the world of the Midwest Research Computing and Data Consortium,

exploring its members, the challenges, and future prospects. We had the opportunity to speak with Wyatt Madej, Technical Architect and former Midwest RCD Residency Fellow, who shared his insights on the field.

[Read the interview with Wyatt Madej](#) >

Recommend a colleague for a Profile Spotlight interview

MAY

1

SPRING 2024 ANNUAL MEETING

**Tuesday, April 30 (Networking Social Event)
and Wednesday, May 1, 2024 (Meeting)**

The final day to register and receive a complimentary hotel room was April 11.

Registration remains open, but complimentary lodging is not guaranteed. Additional details:

- B1G Conference Center: 5440 Park Place, Rosemont, IL 60018
- Register to attend in-person or online via Zoom
- Travel Support Available

Webpage with draft agenda and registration information

Co-located Midwest GPFS User Group meeting

DEI Affinity Group

We strive to build an inclusive and equitable culture which will promote and increase diversity. This group is being created to ensure that there is diversity in committees, events (annual meetings), and leadership positions.

[Join the DEI Affinity Group >](#)

ROI Affinity Group

This group focuses on approaches to gauging impact as well as quantitative and qualitative measures needed to communicate the benefits of investments in cyberinfrastructure on our campuses.

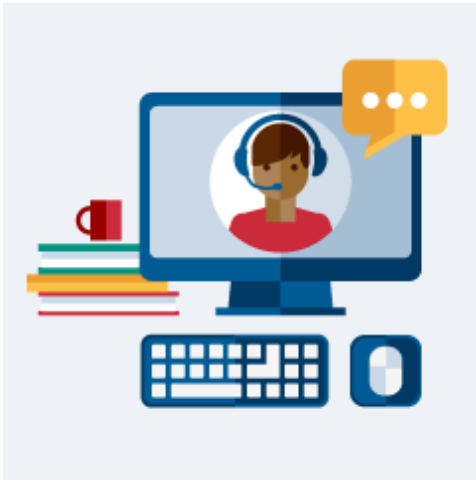
[Join the ROI Affinity Group >](#)

Scientific Cloud Affinity Group

This group focuses on how HPC centers approach cloud computing to support increasingly diverse scientific and engineering research and education endeavors and what skill sets CI professionals will need to support cloud workflows and data management.

[Join the Scientific Cloud Affinity Group >](#)

Connect with the Midwest RCD



Office Hours with the Program Office at IU

Upcoming sessions:

- Friday, April 19
- Friday, April 26
- Friday, May 3
- Friday, May 10
- Friday, May 17
- ~~Friday, May 24 canceled~~
- Friday, May 31

No registration needed, just click on the Zoom link between 10 - 11 a.m. EDT on the days listed above.

[Add to Outlook calendar.](#) >

[Click here to join via Zoom.](#) >

Connect with the Community

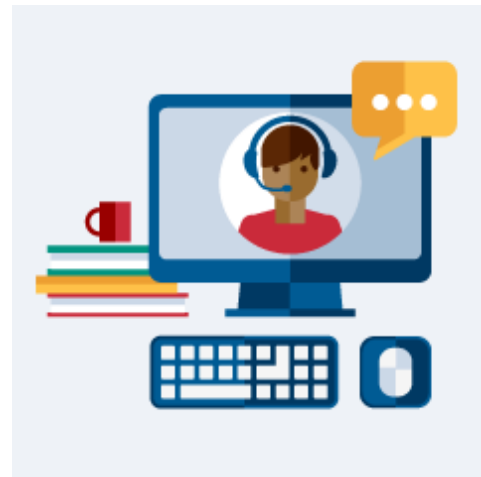
[Slack | Join Slack](#) >

[LinkedIn Group](#) >

[X](#) >

[Mailing List](#) >

[Forward this Email](#)



Upcoming Related Events

Know an event to include here? [Submit your Midwest RCD-related event info.](#)

April 30 and May 2

[Midwest GPFS User Group](#)

Join us for the first Midwest GPFS User Group event! This in-person gathering will be held at the Big Ten Conference in Park Place, Rosemont, IL, USA in tandem with the Midwest Research Computing and Data Consortium Spring meeting. Whether you're a seasoned GPFS user or just getting started, this event is perfect for anyone interested in learning more about GPFS and connecting with fellow enthusiasts.

Accepting Applications March 15 until May 15

[INESC TEC International Visiting Researcher Programme-2024 Call for Applications](#)

The INESC TEC International Visiting Researcher Programme (IIVRP) is aimed at researchers, including Master's and PhD students, affiliated with universities or other organisations outside of Portugal, and interested in spending up to three months with our seasoned researchers working on topics of mutual interest.

Mon-Fri, May 13-17 • University of Oklahoma, Norman Campus

[Linus Cluster Institute Workshop](#)

If you have some experience as an HPC Linux system administrator and want to expand your skills, this is the workshop for you. Those who have attended an LCI Introductory Workshop in the past are especially encouraged to attend.

Mon-Fri, June 24-28 • Via Zoom

[CI Facilitator Virtual Residency](#)

Register for the FREE Virtual Residency 2024 Summer Workshop on Research Computing Facilitation. Facilitated by Henry Neeman, Executive Director, Research Computing, University of Oklahoma.

Tue-Thurs, October 8-10 • Bozeman, MT

[Science Gateways 2024 Annual Conference-Call for Participation](#)

Gateways 2024 is an opportunity for users, developers, and providers to showcase their science gateways accommodating teaching, empowering

and engaging research, and providing technologies to various communities. It will also offer diverse options for sharing and publishing work and networking in the community.

About the Midwest Research Computing and Data Consortium

Regional stakeholders working collectively in a trusted forum can shape the future by working collectively on topics of mutual interest, by onboarding organizations that find value in the mission of the organization, by sharing information transparently, and by providing opportunities for CI professionals staff members in our organization to contribute, to be mentored, to belong to a cohort, and to become leaders.

[Read more about Midwest RCD](#) >



RCN:CIP: Midwest Research Computing and Data Consortium

This material is based upon work supported by the National Science Foundation under Grant No. 2227627. Any opinions, findings, and conclusions or recommendations expressed in this material are those of the authors and do not necessarily reflect the views of the National Science Foundation.

[NSF Award information](#) >





Indiana University
107 S. Indiana Ave
Bloomington, IN 47405