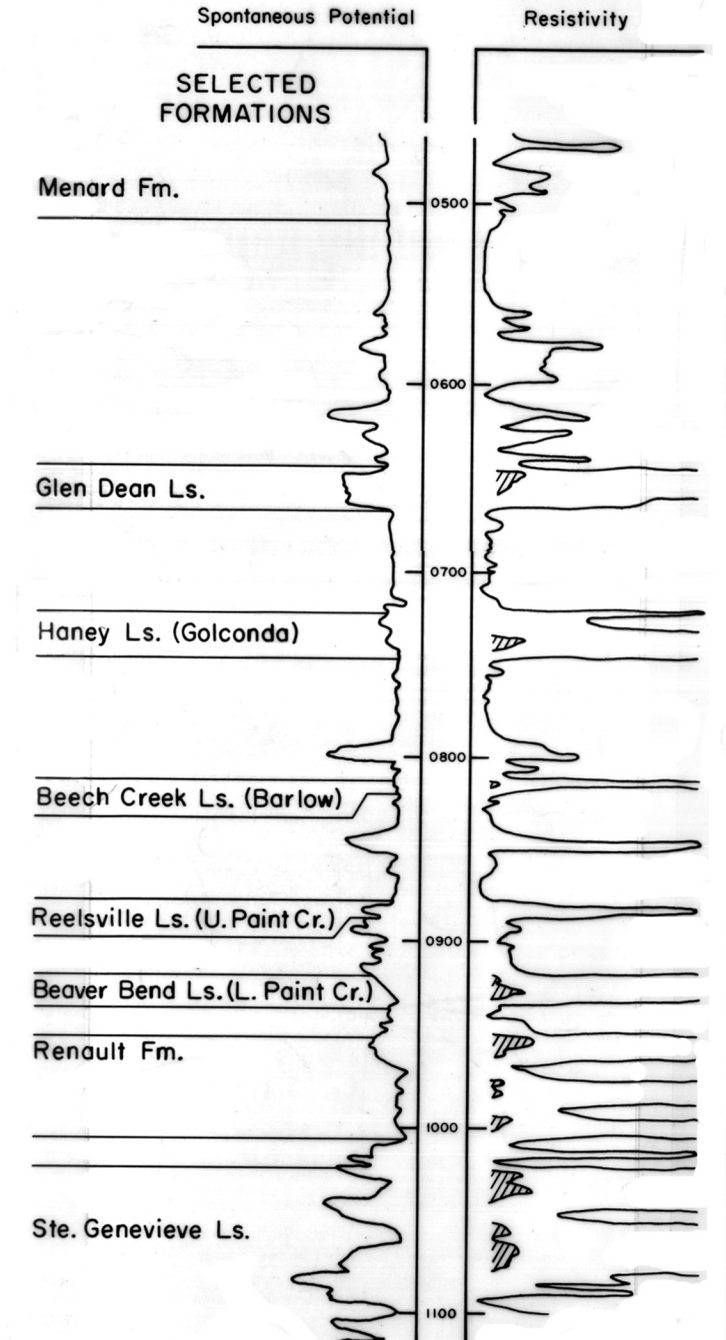


PORTION OF  
 TYPICAL ELECTRIC LOG

Dubois Co., Sec. 33, T. 3 S. - R. 5 W.  
 L. Harris - No. 1 J. Clark



EXPLANATION

- + Dry hole
  - Oil well
  - ⊙ Gas well
  - ⊗ Water repressuring or brine disposal well
  - ⊕ Gas storage well
  - ⊙ Observation well
  - ⊗ Abandoned oil well
  - ⊗ Abandoned gas well
  - ⊗ Abandoned water repressuring or brine disposal well
  - ⊙ Abandoned observation well
- (Well locations from Petroleum Exploration Map No. 21 B. Structural data by G. L. Carpenter. Some well symbols have been deleted in areas of dense drilling to provide space for structural control data. Some structural control data have been omitted in areas of dense drilling.)
- 485 Control value on base of Beech Creek Limestone (Barlow). Datum is mean sea level.
- State property from Indiana Dept. of Natural Resources, Division of Engineering, deed maps of latest record as of Nov. 1976
- U.S. Government property from U.S. Department of Agriculture, Forest Service, deed maps of latest record as of November 1975

Base compiled by Indiana Geological Survey

MAP OF DUBOIS COUNTY, INDIANA, SHOWING CONTROL ON BASE OF BEECH CREEK LIMESTONE (BARLOW)  
 Scale approximately 1 inch to 1 mile  
 Polyconic Projection

Compiled by G.L. Carpenter  
 December 31, 1977  
 Revised December 31, 2000