

Effective Teaching among Nontenure Track Faculty: How Discipline Matters



Amy Garver
Genevieve Shaker
Megan Palmer
Thomas Nelson Laird

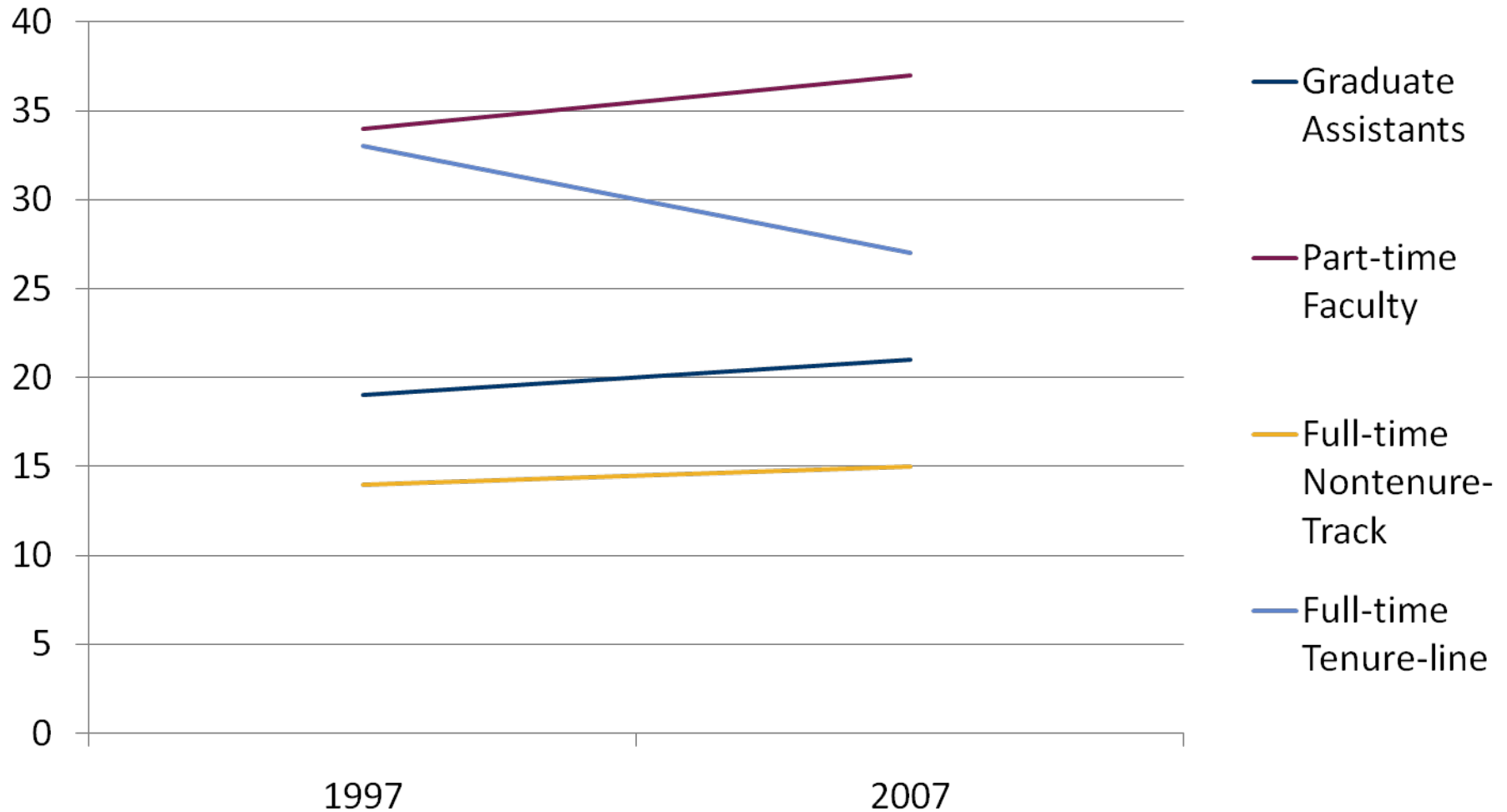
Session Presented at the Professional and Organizational Development Network in Higher Education
Annual Conference, St. Louis, MO

11/5/2010

Session Outcomes

- ***Review trends and literature on nontenure-track faculty (NTTF)***
- ***Reflect on individual and institutional experiences with NTTF***
- ***Discuss faculty culture in four disciplines***
- ***Interpret and apply disciplinary findings***
- ***Develop action steps to address needs of NTTF***

Percentage distribution of instructional staff by type: 1997 and 2007



American Federation of Teachers, 2010

Public University Snapshot

- *65% of non-graduate student instructional personnel at public institutions are NTTF*
- *NTTF teach 1.5 million or 49% of the undergraduate classes each term*
- *It is estimated that an average of 43 percent of undergraduates at public colleges in any given term are taught by contingent faculty*

Top Employers of Nontenure-Track Faculty by General Disciplinary Area

Discipline	Number of faculty (in thousands)	NTT %	Part-time %	Biglan's Category
<i>Education</i>	<i>78.7</i>	<i>62%</i>	<i>49%</i>	<i>soft-applied-life</i>
<i>Business</i>	<i>63.4</i>	<i>48%</i>	<i>46%</i>	<i>soft-applied-life</i>
<i>English and literature</i>	<i>43.0</i>	<i>55%</i>	<i>40%</i>	<i>soft-pure-non-life</i>
<i>Mathematics</i>	<i>33.9</i>	<i>45%</i>	<i>34%</i>	<i>hard-pure-non-life</i>
<i>Psychology</i>	<i>31.6</i>	<i>45%</i>	<i>35%</i>	<i>soft-pure-life</i>

Source: NSOPF 2004

What the Literature Says about NTTF

- ***Heavily relied upon to achieve teaching mission***
- ***Negatively associated with educational practices and learning outcomes***
- ***Often under-supported, under-recognized, and under-compensated by their institutions***
- ***Yet, they choose to teach***

Roundtable Discussions

- ***STEM - Tom***
- ***Professional - Megan***
- ***Arts and Humanities - Gen***
- ***Social Sciences - Amy***

Causes of Disciplinary Differences

- *Organizational and economic forces*
- *Socialization process*
- *Norms for teaching and learning*
- *Approach to knowledge*

Agenda for Roundtable Activity

- ***Discussion of faculty culture within disciplines***
 - ***For teaching***
 - ***In relation to NTTF***
- ***Interpret FSSE findings for disciplines***
- ***Development of action steps***
 - ***Faculty development***
 - ***Organizational development***

Contact Information

Amy Garver

Indiana University

HESA Doctoral Candidate

agarver@indiana.edu

Megan Palmer

Indiana University Purdue University
Indianapolis (IUPUI)

Assistant Dean

mmpalmer@iupui.edu

Gen Shaker

Indiana University Purdue University
Indianapolis (IUPUI)

Associate Director

gshaker@iupui.edu

Tom Nelson Laird

Indiana University
Assistant Professor & FSSE Project
Manager

tflaird@indiana.edu