

Ketterson / Nolan Research Group Collection

This document is part of a collection that serves two purposes. First it is a public archive for data and documents resulting from evolutionary, ecological, and behavioral research conducted by the Ketterson-Nolan research group. The focus of the research is an abundant North American songbird, the dark-eyed junco, *Junco hyemalis*, and the primary sources of support have been the National Science Foundation and Indiana University. The research was conducted in collaboration with numerous colleagues and students, and the objective of this site is to preserve not only the published products of the research, but also to document the organization and people that led to the published findings. Second it is a repository for the works of Val Nolan Jr., who studied songbirds in addition to the junco: in particular the prairie warbler, *Dendroica discolor*. This site was originally compiled and organized by Eric Snajdr, Nicole Gerlach, and Ellen Ketterson.

Context Statement

This document was generated as part of a long-term biological research project on a songbird, the dark-eyed junco, conducted by the Ketterson/Nolan research group at Indiana University. For more information, please see IUScholarWorks (<https://scholarworks.iu.edu/dspace/handle/2022/7911>).

License/Disclaimer Statement

By downloading this document or using any information contained therein, you agree to the license terms outlined at <https://scholarworks.iu.edu/dspace/handle/2022/15260>, which explain terms governing use, creation of derivative research, and requirements for citing the document.

WVN-1989

♂=2021-09419 S O Yel-L, Brwn/org-R
♂=2031-33442 Wht/Red O S-R, Yel O Lt Blu O White-L ?

♂=7750-63942 Dk Grn O Red O S-R,
Yel/Dk Blu O Pnk-L
♀=2021-09621 S O Blk O Org-L, Dk Grn/Lt Grn-R

♂=2031-33486 Wht/Red O S-R, Yel O Org O Yel-L
♀=2031-33489 Wht/Red O S-L, Org O Lt Blu O Org-R

♂=2031-33121 Red/Lt Blu O S-R, 2 Red/Lt Blues O Red-L
♀= Wht/Red O S-L, White O Lt Blu-R

♂=2021-09186 S O Lt Grn O Yel-L, Yel-R
♀=2021-09207 Red O S-L, Red O Lt Grn-R

♂=2031-33276 Red O S-R, Red O Yel-L
♀=?

♂=2031-33089 - S O Yel O Lt Blu-R, Org-L
♀=2021-09280 S O Blk O Lt Grn/Red-R,
Dk Blu-L

♂=2031-33021 S O Pink O Lt Grn-R, Blk/HT Pnk-L
♀=2021-09654 S O Org O Grn/Brwn-L, Red/White-R

♂=1680-61072
Lav O S-R, Lav O Pnk-L

♂=1700-71566 Dk Blu O S-R,
Dk Blu O White-L
♀=2000-94726 Yel O S-L,
O Org-R

♂=7750-64678 S O Red/Lt Grn-R,
Lt Blu-L
♀=2011-22590 S-L, Pnk O Dk Grn O
Red-R

Fledged 6/21

WVN/WVS Fork

WAR SPUR TRAIL

nest
6/7 egg
6/8 Fled
6/18 Nest S
tag 65

WVN 75
Found in
looking stream bank

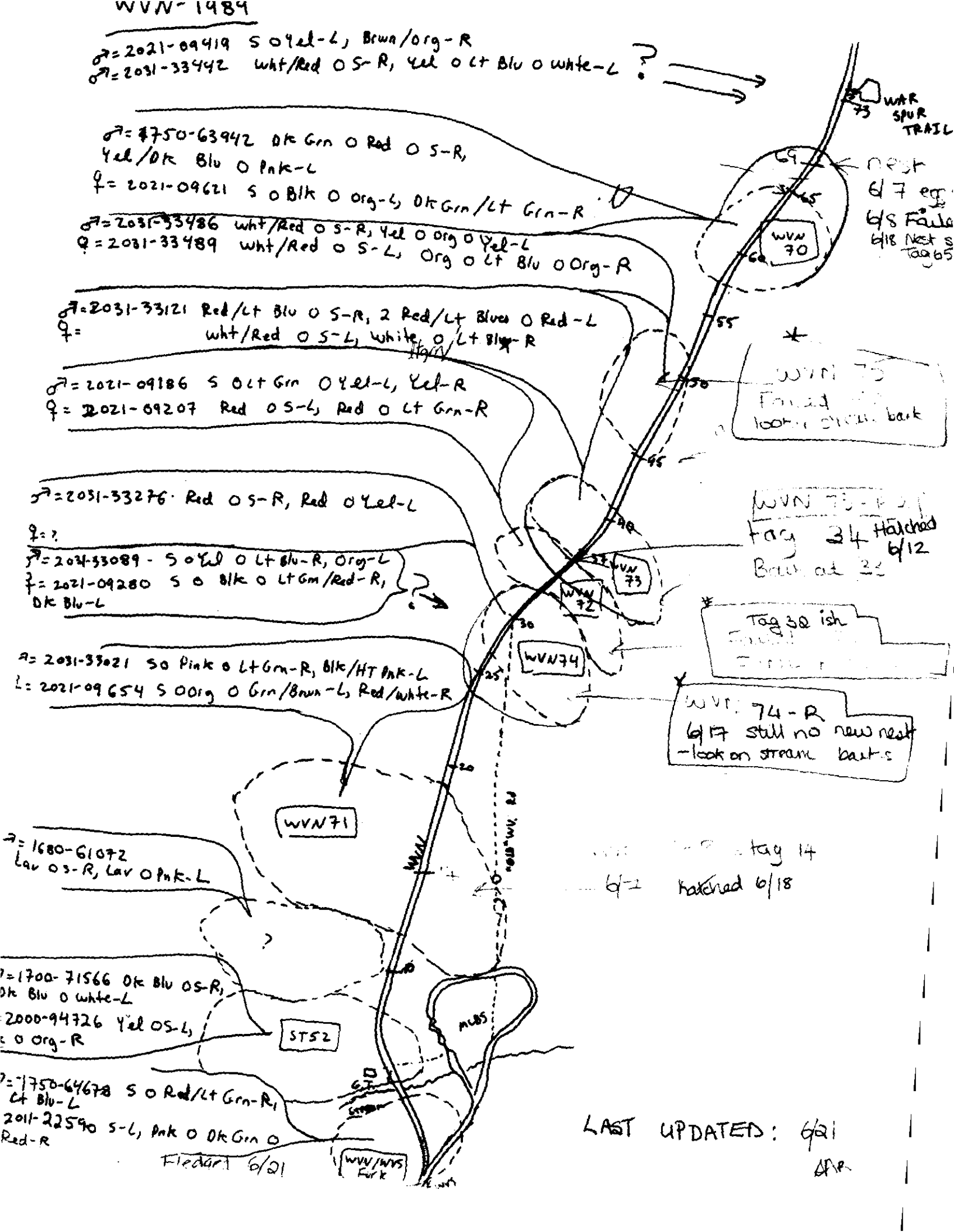
WVN 73 - P 21
tag 34 Hatched
6/12
Brown at 33

Tag 30 ish
Found in
stream

WVN 74 - R
6/7 still no new nest
-look on stream banks

tag 14
hatched 6/18

LAST UPDATED: 6/21
APR



WVS-1989

2/5/15

Failed 4/6

WVS 180

♂=2021-09427- S O Yel/Org-R,
Lt Grn-L

♀=2021-09654
S O Lt Bl O Org-L
Yel/Bk-R

WVS 172-R2

6/12-Building needs more
hair
6/27 hair

Failed 5/6

Power cut

WVS 171

WVS 171-R

ACT 12
1 nest
6/20/15

NO KNOWN
NEST 6/20

♂=990-06603-S-R,
Lw O Red O Lw-L
♀=2021-09693-S-L, Pnk O Yel
O Pnk-R

♂=2021-09367
S O Dk Grn O Yel/Org-R
Lt Bl/Dk Bl-L

* 175
* 49 eggs
incubating

HD

♂=2021-53090-S O Yel O Lt Bl-
Lt Grn-L
♀=2021-09130-S O Dk Grn O Red-L Ad-R

♂=2021-09378-S O Dk Grn O
Yel/Org-R, Lt Bl/Dk Bl-L
♀=2021-09658-S O Org O Lt Bl/Dk Bl-L

♂=990-06655-Red O Lt Grn O S-R
Yel-L
♀=2011-22260-S O Blk O Org/Red-L,
Org/Red-R

♂=1700-71631-S O Lt Bl O Red-R, Lt Bl-L
♀=2011-22593-S-L, 3 Org/Blks-R

♂=1750-22306-wht/red O S-R, Org O Dk Bl O Org-L
♀=2011-64139-Org O S-L, 2 Lt Grn/Red-R

♀=2021-09296-S O Brn/Org-L, 2 Lt Grn/Advs-R

♂=1750-64111-S O Yel-L, 2 White/Lwvs-R
♀=1750-22856-S O Dk Bl O Org-L, Org-R

WVS 179 ♂ SOYEL O Dk Bl O Wsh O
♀=2011-22039-Dk Grn O S O Org-L, Lt Bl/Blk-R
♀=2011-22261-S O Blk O Lt Bl/Red-L, Lt Bl/Ad-R

WVS 173 R2 Failed 6/12
6/12-Grass-Start?
6/25 1 egg
6/28 2 eggs

WVS 174-F2 Failed 6/12

♂=2011-22483-S O White O Blk/Red-R, Blk/Red-L
♀=2011-22886-S O Red O White-L, Blk/HT Pnk-R

♂=2011-22299-Lt Bl/Dk Bl O S O Blk-R, Lt Bl/Dk Bl-L
♀=2021-53984-White/Red O S-L, 2 Org/Lt Grns-R

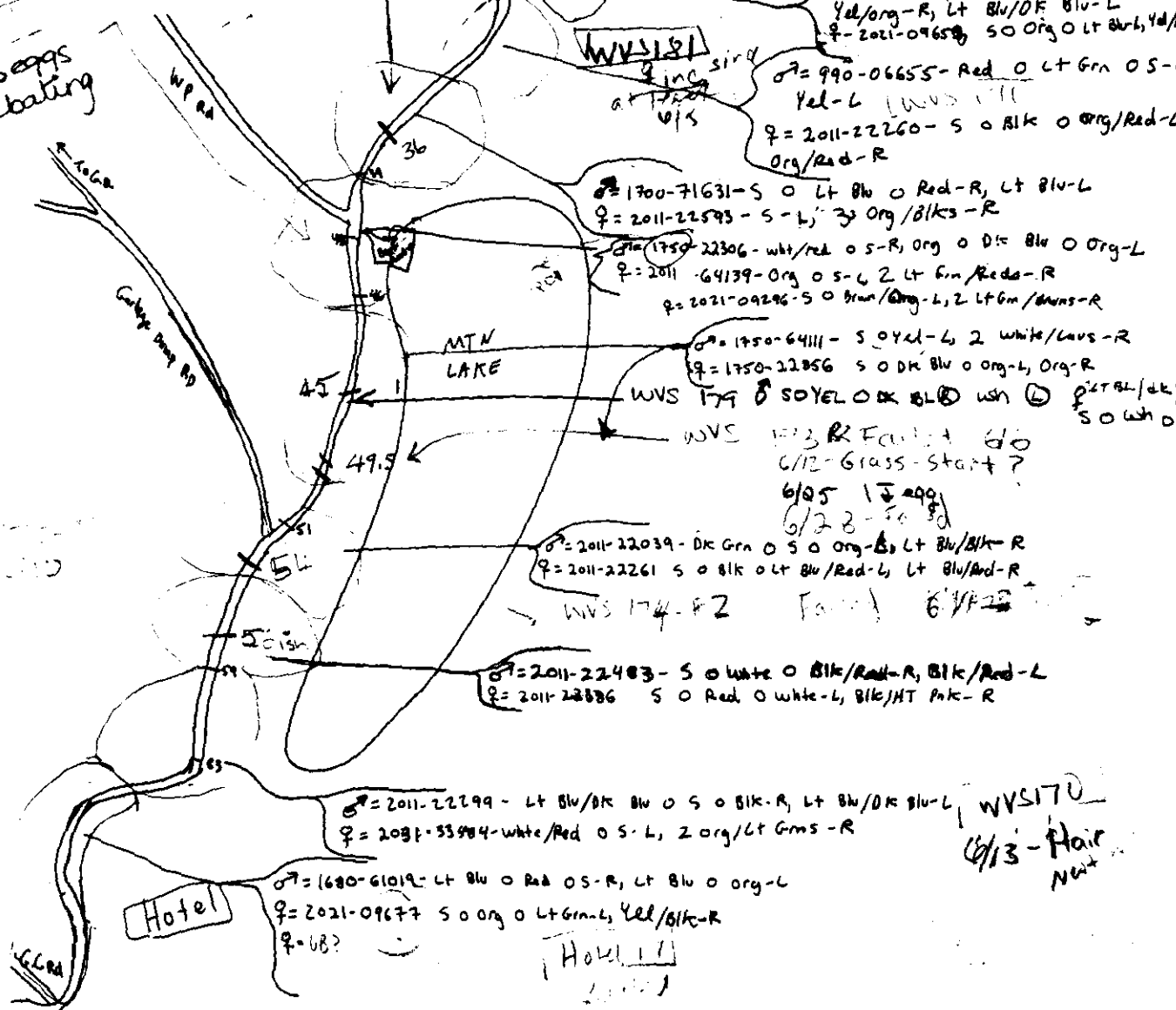
♂=1680-61019-Lt Bl O Red O S-R, Lt Bl O Org-L
♀=2021-09677-S O Org O Lt Grn-L, Yel/Blk-R
♀=08?

Hotel

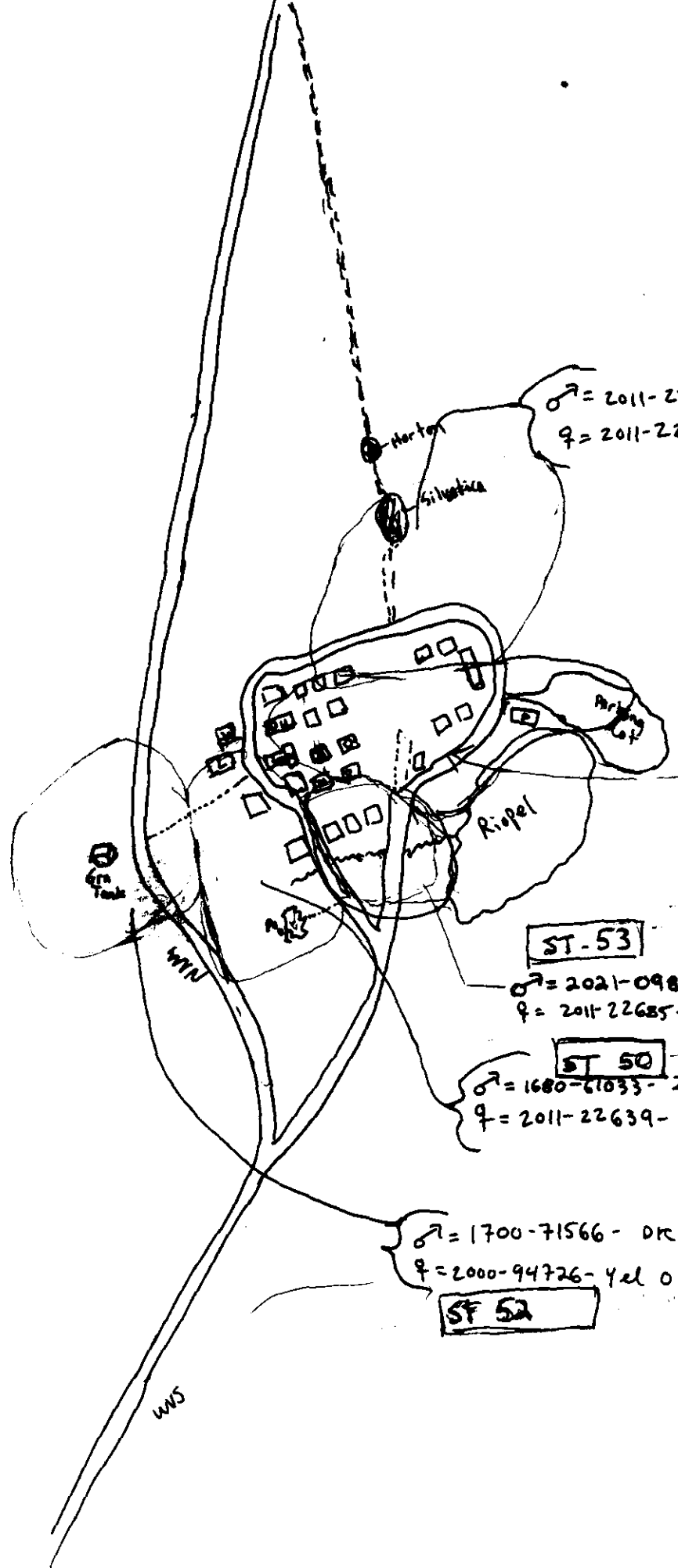
Hotel 111

WVS 170

6/13-Hair
New



7/17



♂ = 2011-22692 - S O Yell-R, Lt Grn/Org-L
 ♀ = 2011-22685 S O Yel-R, DK Blu-R (disappeared)

♂ = 2011-33276 - Red O S-R
 (moved to WVN) Red O Yel-L

♂ = 2021-09414 - S O Yel-R, -
 ♀ = 2011-22696 - S O Pink-R, DK Blu-L (Left)

♂ = 2021-09797
 S O Pink O DK Blu-L,
 DK Blu/white-R

ST-53

♂ = 2021-09813 - S O Yel-L, HT Pink/white-R (Riopel pair)
 ♀ = 2011-22685 - S O Yel-L, DK Blu-R

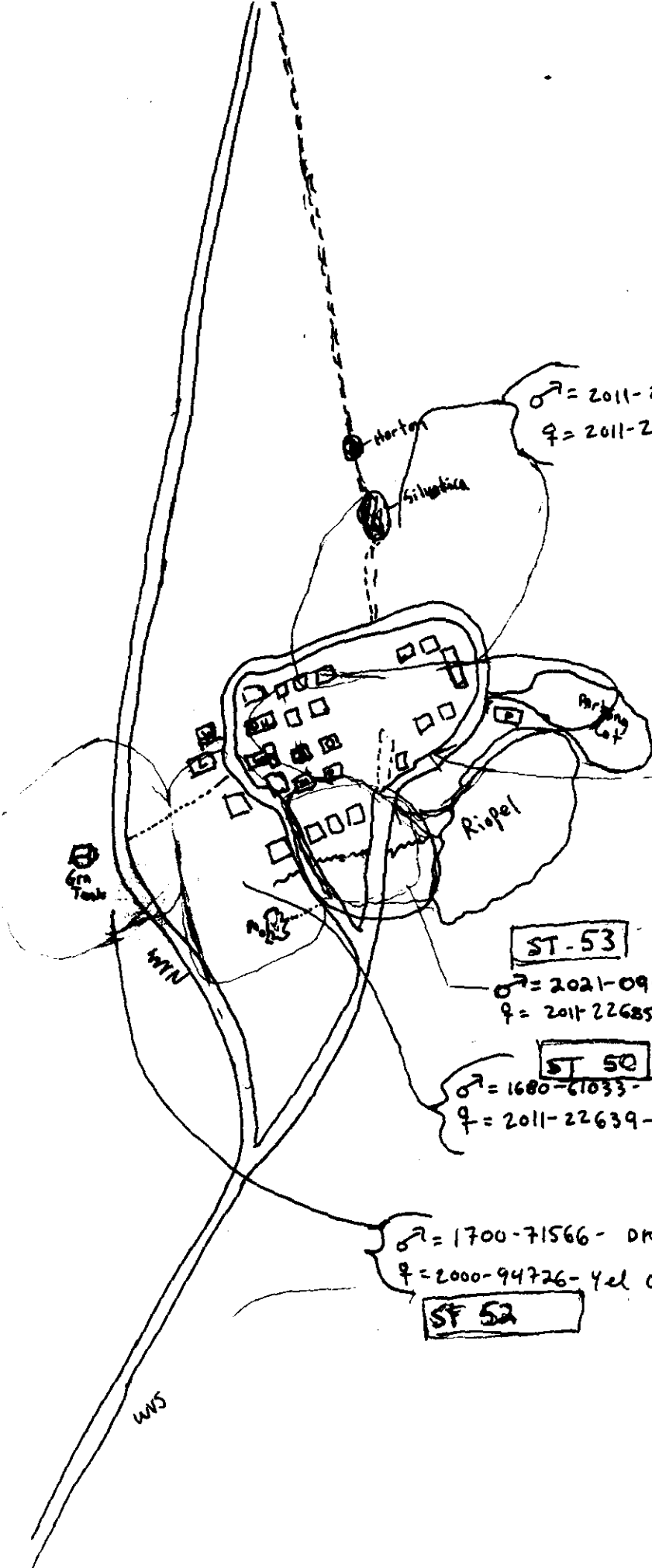
ST 50

♂ = 1680-61033 - 2 Pale/DK Grns O S-R, Lt Blu-L
 ♀ = 2011-22639 - S - R, white O DK Grn O white-R

♂ = 1700-71566 - DK Blue O S-R, DK Blue O white-L
 ♀ = 2000-94726 - Yel O S-L, Blk O org-R

SF 52

7/17



♂ = 2011-22692 - S O Yell-R, Lt Grn/Org-L
 ♀ = 2011-22685 S O Yel-R, DK Blu-R (disappeared)

♂ = 2031-33276 - Red O S-R
 (mound to WVN) Red O Yel-L

♂ = 2021-09414 - S O Yel-R,
 ♀ = 2011-22696 - S O Ink-R, DK Blu-L (Left)
 ♀ = 2021-09797
 S O Pink O DK Blu-L,
 DK Blu/white-R

ST-53

♂ = 2021-09813 - S O Yel-L, HT Pink/white-R (Riopel pair)
 ♀ = 2011-22685 - S O Yel-L, DK Blu-R

ST-50

♂ = 1680-61033 - 2 Pale/DK Grns O S-R, Lt Blu-L
 ♀ = 2011-22639 - S-R, white O DK Grn O white-R

♂ = 1700-71566 - DK Blue O S-R, DK Blue O white-L
 ♀ = 2000-94726 - Yel O S-L, BIK O Org-R

ST-52

~~2000~~

LAUNDRY

ST 50

JUNCO NEST LOG SHEET (CON'T)

DATE	STATUS
6/26	SAW ♂ FORAGING AROUND LAUNDRY BUILDING & FLYING FLYING OVER LAUNGE - POSS SINGING (UNCERTAIN) - STILL NO SIGN OF ♀
7/3	LOOKED AROUND SWIMMING POOL AREA ~20 MINS - NO SIGN OR SOUND OF ♂ ANYWHERE
7/15	Saw ♂ copulate w/ ♀ in ferns in woods behind Julian's. Saw both's bands. ♀ chipped a little w me as I followed her, but no nest found!
7/17	- ♀ chipped w me in front driveway, just toward Gate from Rateresque + Julian's. ♂ was there singing, & when I went over to see him, she flew in from West & chipped. Flew off toward swim. pool after 2 min. still chipping. Followed her, & found the ♂ + another unseen J. Chipping in Rhododendrons at an owl, which I flushed. No more chipping w me there.
7-17	♀ chipped in back of Julian's - next to Laing - by Rateresque.
7/21	SAW ♂ IN FLIGHT W/ WING FLICK ♂ @ SWIMMING POOL
7/23	Saw ♂ w/ ST53 ♀ - she flew up from ground right outside of Front Gate, swim-pool side, & chipped w me - preened - agitated. The ST53 ♂ was also there. Some sort of aggression (who?) then ♀ flew in toward swimming pool - males followed. Then I'm almost sure I saw the ST50 ♀ ⁵⁰ flew up & they sat near each other for ~1 min. ♂ was w/ a Juv, UB, who stayed near him - into swim. pool, etc. looked in pool - did not find anything (!), but got chipped at by some one from 30's. then it flew off toward Julian's.
7/29	SAW ♂ FORAGING IN FRONT OF SCHWEINITZ

JUNCO NEST LOG SHEET (CON'T)

DATE	STATUS
7/14	Zig and SAR searched for 45 mins between 0100 and 0145 for fledgling. Parents chipping by nest, ♂ sometimes singing. No sign but 3-4 times I thought I heard it for sure. at later 0100-0145 around 1300-1345 Searched again but this time no sign of parents. was seen at 0100-0145
7/15	Searched territory for 30 mins from 850 to 920 a.m. + no sign of any one. at 840 I observed a Junco in close proximity to Sylvatica ♂ who was singing at the time. The un ID'd Junco was chipping at a chepment. on investigation both Juncos flew off into neighboring tree but were chased off by Robbins + they flew off in direction of Sylvatica pond.
7/16	13:30 + 14 1:30 pm. ♂ singing in parking lot and ♀ following him around in general vicinity. one or 2 chips heard from her at 14:30 but not at 13:30.
7-19	Watched ♂ ~ 20 min, sang alot from badminton court to Clayton. foraged fast + sang - alone the whole time.
7/23	♂ Sing near dinning hall - Loudly
7/24	SAW ♂ BEHIND BURNS

2/1

removed implant, only small remnant, T almost entirely gone
 2000 at 14/10/01

JUNCO NEST LOG SHEET (CON'T)

DATE	STATUS
7/7	all OK, 3 young, ♀ off (two ♀ has been off 9 out of 10x since she looked! later at 1700 ♀ entered lab building on her own, so we decided to inject her for 2-labeled water! as did. I checked nest young were alone - ♂ showed alarm)
7/8	♂ found carcass in Bill Re's lab room in basement at 1100, released, implant new in place, small one on right, large on left. wound from leg had healed - was just a tiny scab. caught gam in P.M. Nest watched twice. once unsuccessfully, one fine.
7/9	apparent forced copulation, ♀ was IP, behavior was clear, P.M. ^{expected} ^{for} 2-label under. P.M. wing fluttering, cat scream calls, interrupted when Tommy Angliberg approached. 2nd bird not IP, probably <i>Sylvatica</i> but no way to know
7/9	Nest watch - ♂ seemed puffy + a bit wet fed once during watch and once after. Yesterday he fed twice, In afternoon caught
7/10	♂ again and rebled
7/11	POSSIBLE FORCED COPULATION BET SYLVATICA ♂ + THIS ♀ nest watched, I think (300 feet away) that there are only 2 young ♀ very cautious, agree at 1300 there were only 2 young
7/12	saw another 3 bird into with <i>Sylvatica</i> ♂, ♀, ♀ near Mary Ann's cabin <i>Sylvatica</i> ♂ now has transmitter
7/13	NEST WATCH, 50 MINS. CUT SHORT BY RAIN - FLEDGING POSTPONED later in day photographer took pictures of adults feeding young and of young themselves, one was light 14.8, other brown 16.7, as I returned young to nest and try a second time I stayed for at least 45! At 2000 I returned to white young was gone and the 1st brown young was in the nest but starving - sharpish keel, protruding trachea, muscle sp spasms, not able to remain upright. I have no idea why. I declared this young DEAD and brought it to the lab but do not expect it to live until A.M. - brought in 2000 - fed Syur water + cat food - died by 2020. Is 2-label water preventing feeding by adults???
7/14	young still alive (heard, parents alarmed), SAR looks for it to try to collect tail feathers

JUNCO NEST LOG SHEET

♂-♀ 2 label watch

Nest I.D. SISL-β
 Female:

Treatment Group T IMPAL
 Date Found 6/20/89

✓ Band 2021-09797 Status when found _____

Colors S o Pals o DK Blu-L, DK Blu/white - R

✓ Male Band # 2021-09414

Colors S O Yel - R, 3 wht/Blks - L

Loc. Power cut, behind Heinz-More

Eggs laid 4 # Hatched, Date ~ 6/21/89 (7/2)

Date Incub. Onset ~ 6/19/89 # Fledged/Fail, Date _____

Male Bled (Y/N), Date _____ Implant Removed (Y/N), Date _____

Female Stayed/left _____

DATE	STATUS
6/20	Ellen found nest - ♀ on 4 J. eggs.
6/21	♀ on 4
6/22	" , d-d incubation watch
6/23	♀ on.
6/24	" "
6/25	" ♂ Seen Foraging on Pavilion roof
6/25	Did incubation watch. SETUP NET AFTER 700PM FOR MORN'G BLOODS
6/26	OPEN NET @ 8:30 & PUSHED ♀ IN REPAIRS. SAM BLOODING.
6/29	♀ on - ♂ was in fern ~ 2 feet from nest quiet. He sang very softly after I was there.
6/30	SAW PR. FORAGING TOG. IN FRONT OF HEINZ-MORE; ♂ ATTACHED AN INTUDER ON LAWN - COLORS NOT SEEN, UNFORTUNATELY
7/2	Still 4 eggs ♀ on.
7/2	1st egg hatched, 1700, still just 1 hatched, 1900 2 hatched, 2nd still wet, 3rd well piped, 4th not piped
7/3	LW caught + bled ♂ ♀ egg-motimized but did not see ground well, clusps looked full size, I put large implant on one side it was half out. hormone also much reduced
7/5	2 nestlings no 4th egg / nest watch + weighed young day 2
7/6	Nest watch 90 mins. one nestling's front of nest at 8:49. replace it at 9:04. intruder walked up to nest and the brooding ♂ and had a pretty large interaction with it. (fluttering - but only at nest) intruder flew off she remained

♂ - 2/10/89
w/10/89

JUNCO NEST LOG SHEET

Nest I.D. ST 51

Treatment Group T impl

Female:

Date Found 4/20/89 # 2-5/1/89

Band 2011-22696

Status when found # 1 ♀ building - early
2 ♀ on 3 J. eggs

Colors S O Pnk-R, DK Blu-L

Male:

Band # 2021-09414

Colors S Oyel-R, Lt Grn/Red-L ♂ rebanded 6/3 soyl-R
3 white/black-L

Loc. Behind Gattinger, in reed clump

Eggs laid _____ # Hatched, Date _____

Date Incub. Onset 5/1/89 # Fledged/Fail, Date _____

Male Bled (Y/N), Date _____ Implant Removed (Y/N), Date _____

Female Stayed/left _____

DATE	STATUS
4/20	EK saw ♀ building
4/23	Nice grass-lined - ready for deer hair
4/25	advanced but still not completely lined, certainly no deer hair
4/26	No egg.
4/27	"
4/28	" ♂ follows sing a lot from power cut behind Burns
4/30	♂ Sing like mad - Nest ??? Looked. ♂ sing in parking lot, Ripel, all over ♀ w/ him some of the time. ♀ overheard 2259 at 1945 ∴ probably just beginning to lay
5/1	♂ alone a lot today - Found new nest! In parking lot, in dirt mound, under grass overhang; ♀ was on 3 J. eggs.
5/2	Failed, 2 eggs bot broken, ♂ on half eaten, no wife note, will never know if she laid 4th time A.M. " "
5/14	♂ Sing alot in parking lot, near Pavillion. Watched ♀ for ~ 1/2 hr @ 9:00 all over the place - started w Pavillion, went by herself to Gattinger, then STR lawn - very leisurly - was still alot, & foraged casually. The Silvatica ♂ was on the lawn (has been singing there today) - went to her & puffed like a giant roll of cotton candy. She sort of ignored him & occasionally twibbed w him. Then, some one (?) chased her violently across lawn from ~ Chapman to under DeSchwinitz. I lost her. Saw her ~ 10 min later in driveway between Burns & Heinz-More - still leisurly. ♂ at parking lot, singing probably no egg to incubate.
5/15, 5/16	both seen w Burns but several times not together, i.e., ♀ was, ♂ alone, pair together, my guess is that ♀ is incubating, she flew toward pavillion
5/19	E.K. followed pr. for 30' seemingly no nest...? ♂ seems to copulate w/ ut ♀ (presume his mate) 4x ♀ solicited full call between copulations, saw clouds!
5/20	" " " " " Burns to Gattinger to lab back to Burns

* when nesting was with bilowal do hair

JUNCO NEST LOG SHEET (CON'T)

DATE	STATUS
5/21	Bud for Burns ♂ (??) BLED ♂ FOR THIS NEST (=BURNS?)
5/22	♀ BLED - SWOLLEN ABD, HEAVY MASS → LAYING? (CCT IN TRAP)
5/24	♂ CT; 21.7 g; implants OK; sub trap behind Gattinger;
5/25	♂ sing a lot now noon on a hot day. ♀ gone? ♀ incubating?
5/28	♀ chipped and me from Road end of lab building
5/29	par seen together w Burns cottage
6/2	looked for ♀/nest - no luck. ♂ sing all over, a lot. <u>♂ rebanded</u>
6/3-6/5	behaves as if unmated ♀ dead?, ♀ gone?
6/7	sing frequently near Chapman
6/11	has returned to Burns, sing a lot in power cut behind Burns
6/12	Prolonged encounter in power cut behind Wayne - MA - with
	2031 - 33457 intruder ♂, which see for details.
	It is a new ♀ 2021 - 09797 - cavity found, no
	n. material in it.
6/13	trid continues, see notes from Val, focus of activity switches
	to Chapman, blk/yel ♂ sing occasionally, trid
	still here
6/14	trid continues, Burns ♂ still doing the chasing, ♀
	calm, Burns ♂ fazzed. He chipped at me
	when I approached back side of Heinz-Mohr
	♀ chipped same place. By 1915 circles have grown;
	Sings, Burns ♂ chases, blk/yel circles quickly; sometimes
	blk/yel starts to fly before he is chased. ♀ draws
	attention to herself by flying in a fluttering way. Now
	both ♂'s and singing but neither sing infrequently.
6/15	3-bird situation persists near women's dorm & flies, Burns ♂ flies,
	3rd bird flies. The only singer this evening is the Burns ♂
6/16	♂ head behind women's dorm



ST 51

JUNCO NEST LOG SHEET (CON'T)

DATE	STATUS
6/17	♂ sings near volleyball court, Chapman, Mary Ann's cabin etc is all over for station
6/18	I spoke ♀ as she + sleeps in spruce tree on edge of lawn, ♂ "sings to her at 2100" flies to her in tree, flies around tree
6/20	VN/EK found nest! take care not to step on it! 4 J eggs, ♀ on, ♂ chips its behind Hanz-mohr on ground in grass clump.
6/21	♀ on, 4 eggs.
6/22	♀ on, did incubation watch

See ST 51-B

STS2-R2, cont

JUNCO NEST LOG SHEET (CON'T)

DATE	STATUS
7/13	-I think 2 Young. Saw Org/Lt Grn-R young; 1 more near fans.
7/15	Saw Org/Lt Grn & white ← Lt Grn young. Both parents fed & chipped - were across rd, on STN side.
7/16	SAW 2 YOUNG; ID-FIED LT GRN & WHT, OTHER UN-ID; IN FERNS N OF GRN TANK INITIALLY, THEN FLOW S OF GRN TANK INTO CANOPY; PARENTS CHIPPED, BOTH FEEDING
7/21	SAW LT GRN & WHT → <u>INDEP</u> ; ADULTS ALARMED + STILL ATTENDING YOUNG; OTHERS LIKELY, BUT VERY HIGH IN CANOPY, SO UN-ID
7/23	SAW LT GRN & WHT → ♀ ALARMED, ♂ SLIGHTLY ALARMED; POSS. MORE ALIVE, BUT THERE IS A FLOCK OF JUVS IN THE AREA MAKING A LOT OF NOISE, & THE FLEDGLINGS ARE HIGH IN THE CANOPY, SO IT'S DIFF TO GET COLORS ANYWAY; FOUND THEM ~30-40 YDS S OF GRN TANK IN WOODS STATION-SIDE; WATCHED ~50 MINS.
7-24	looked for ~15 min, couldn't find family.

JUNCO NEST LOG SHEET

Nest I.D. ST52-R2
 Female:

Treatment Group E impl
 Date Found 6/13/89

Band 2000-94726

Status when found ♀ on 3 eggs

Colors Yel OS-L, Blk O Org-L

Male:
 Band # 1700-71566

Colors DK Blv OS-R, DK Blv O White-L

Loc. Near Green Tank, in bank of Sewage drainage close to where woods start,

Eggs laid 4 # Hatched, Date 6/25 ^{low in bank.} 6/26-4

Date Incub. Onset 6/13 # Fledged/Fail, Date _____

Male Bled (Y/N), Date _____ Implant Removed (Y/N), Date _____

Female Stayed/left _____

DATE	STATUS
6/13	Found nest. Flushed ♀ off 3 eggs (J.) w ~ 1900.
6/16	♀ on 4 eggs
6/21	♀ m.
6/23	Incub. watch - ♀ m.
6/25	Still 4 eggs
6/26	4 young hatched!! ♂ feeds already. Lt ♀ & bled her.
6/28	Tried to catch ♂ - no go. Lt ♀ by accident.
6/29	Not good nestwatch - Tried to catch ♂ - could not, NESTLINGS WEIGHED + MANICURED
7/1	useless nest watch
7/2	4 young in nest 1600; WALKED + BANNED BEFORE 1600
7/3	useless nest watch
7/3	♂ + ♀, bled for 2-color water
7/7	4 young fledged (1 lt → had already fledged), parents lt & bled, ♀ very small (18.3 g), ♂'s small impl removed; 1 fledg had broken leg, brought to lab for hand-rearing (2 blk/yels)
7/9	2 fledglings found, lt orn o wht identified, other not, possibly 3, parents very defensive; found family @ tab II, ~75 m into woods - best to go to green tank they wander into woods on the right a fair distance
7/10	one fledgling - couldn't ID it. same place as above. watched for 45 mins after fledgling seen. Ferns up + above eyeballs, swamp below & people needed, or one real smart everyone! (same situation EK same can't ID)
7/12	same situation, same location, I saw a fledgling and both adults could not ID do not know it - nest all mine

JUNCO NEST LOG SHEET

Nest I.D. ST52-R
 Female:

Treatment Group _____
 Date Found 5/23/89

Band 2000-94726

Status when found ♀ laying 2 J., 3 CB eggs

Colors Yel O S-L, Blk O OLG-R

Male:
 Band # 1700-71566

Colors DK Blu O S-R, DK Blu O white-L

Loc. Volleyball court, near fence, in small bank of depression towards Rd.

Eggs laid 4 # Hatched, Date 6/6^{exp}

Date Incub. Onset 5/25 # Fledged/Fail, Date _____

Male Bled (Y/N), Date _____ Implant Removed (Y/N), Date _____

Female Stayed/left Stayed

DATE	STATUS
5/23	Found nest - ♂ chipped w me - ♀ flushed off. Took out 2 J. eggs, left in 2 CBs, & put in 1 J-egg. Not incubating yet.
5/24	J. egg 3, plus new CB egg. Took out her egg. Now 3 CB, 1 X J-egg.
5/25	J. egg 4. ♀ on. put her 3 eggs back; took out the others. Nothing robbed.
5/26	♀ on.
5/28	" "
5/29	♀ on
5/30	" "
5/31	" "
6/3	" "
6/5	Chipp's
6/6	NEST EMPTY - FAILED
6/12	Saw ♀ flush from old Robin's nest near Green Tank - ♂ sang near Road. Nest does not really seem freshly-lined - ♀ did not chip. Found new nest See ST52-R2

JUNCO NEST LOG SHEET

Nest I.D. ST52
 Female:

Treatment Group T - E impl
 Date Found 4/26/89

Band 2000-94726

Status when found Green stage

Colors Yel O S-L, BLK O Org-R

Male.
 Band # 1700-71566

Colors DK Blv O S-R, DK Blv O white-L

Loc. on STN sewer bank at Green Tank, North side, in grass next to flat rock

Eggs laid 4 # Hatched, Date 5/10 - Failed

Date Incub. Onset 5/8 # Fledged/Fail, Date _____

Male Bled (Y/N), Date _____ Implant Removed (Y/N), Date _____

Female Stayed/left _____

DATE	STATUS
4/26	Found nest ~ 1920 - nice finish grass stage.
4/29	Deer hair today could use more
4/30	Nest complete - empty
5/1	Still empty
5/2	1 CB egg (only)
5/3	Same
5/4	2 J. eggs exchanged - for XJ. egg. Ct + Bled both of pl. ♀ was 23.6 ♂ = 19.2
5/5	J. egg 2 - put in 1 CB egg + 1 J. egg
5/6	Not visited.
5/7	Oh boy - Snow this am - + cold - 2 J. eggs + 2 CB eggs in (snow covering nest) all eggs cold. Did not replace this am
5/8	OK - today there are 3 J. + 2 CB eggs - she laid the 4th. Took out 2 CB eggs, put back her 2, but one of them got a small hole in the shell which I glued, but it may die. So I also left in the XJ. egg (fertile + viable) from <u>WVN70</u> . So now 5 J. eggs
5/10	Failed - nest empty a bit torn.
5/13	No nest found
5/17	Saw pr. ♂ sang - very courtly - ♀ flyd all around! Went into old ? Robin Nest near "stream".
5/20	CAUGHT + REED BEHIND LAUNDRY ROOM (SEED BAIT), IMPLANT OK, Saw ♂ hopping + fighting w/ <u>WVN91</u> ♂. 1800. ♀ chipped at me in area near Helen's plot.

JUNCO NEST LOG SHEET

Nest I.D. ST53-II
 Female:

Treatment Group E IMPL
 Date Found 6/24/89

✓ Band 2011-22625

Status when found Just start-moss

Colors S O Yel-L, DK Blv-R

Male.
 ✓ Band # 2021-09313-3

Colors S O Yel-L, HT Ink/white-R

Loc. hemlock tree branch, right at driveway of STN, near ^{back} where ^{~4ft up.} the stream runs under the Rd.

Eggs laid _____ # Hatched, Date exp 7/14

Date Incub. Onset _____ # Fledged/Fail, Date _____

Male Bled (Y/N), Date _____ Implant Removed (Y/N), Date _____

Female Stayed/left _____

DATE STATUS

- 6/24 Found nest - ♀ went in it.
- 6/25 New nest has more moss, a cup now. Not very stable.
- 6/26 WATCHED ♀ & ♂ GATHER TWIGS & DRIED GRASS ~ 15 MIN. (♂ FOLLOWED ♀, WHO DID THE GATHERING) - NEST STILL ACTIVE (BUILDING) - BOTH CHIPPED MODERATELY
- 6/27 Nest Fallen sideways - tied it back up.
- ~~6/28~~ Still active.
- 6/28 Some hair tonight.
- 6/29 ONE JUICE BGS - couldn't find pair or fledgling
- ~~6/30~~ → 3 J. eggs!
- 7/1 ♀ on - 45 eggs - Tied nest up again S.R. Did incub. watch.
- 7/2 ♀ on @ 630
- 7/3 6445 2 CUMS, WOT
- 7/4 EGGS GONE, NEST FAILED!!
- 7/7 ♀ back feeding real/lt green young who so full size but still keep. ♀ shared alarm, ♀ = ♂ fed young, recall she was incubating!! Will she re-nest? Yes. She is building new nest in back driveway near old start-moss & foundation-feeding fledglings, too.
- 7/10 Grass stage done-has a touch of dark hair w ~ 1930.
- 7/11 Same as last night.
- 7/12 " "
- 7/13 Saw ♂, ♀, and banded young feeding in turnpike near Burns cottage. young make lots of contact calls, no alarm by parents, did not see young given food, did see ♂ feed itself, still family still together
- 7/17 - nest abandoned - looked around for ♀ or nest - no go.

H-R _____

ST53-II ca #1

JUNCO NEST LOG SHEET (CON'T)

DATE	STATUS
7/23	See <u>ST50</u> Nest log.
8/5	cf male - Removed implants.

Pair/
JUNCO NEST LOG SHEET

Nest I.D. ST53
Female:

Treatment Group E impl
Date Found 5/14/89

Band 2011-22685

Status when found Pair together

Colors S 0 Yel-L, Ok Blu-R

Male:

Band # 2021-09813

Colors S 0 Yel-L, HT Pnk/white-R

Loc. Seed (Barns) of Ripel Ponds, Near Trail to Spring

Eggs laid _____ # Hatched, Date ~ 6/8 (6/8-9)

Date Incub. Onset _____ # Fledged/Fail, Date _____

Male Bled (Y/N), Date _____ Implant Removed (Y/N), Date _____

Female Stayed/left _____

DATE STATUS

- 5/14 Saw Pr. together on bank of Ripel, toward trail leading to Spring Rd, on S. side. "Hung out" - leisurely. ♀ went to bank w/out doing anything - there is a perfect cavity there. ♂ sang softly. Then they flew into drainage area.
- 5/15 Saw Pr. together on bank of Ripel, toward area from yesterday. Cavity is started! Moss in tree - 1500
- 5/17 Complete
- 5/18 Empty.
- 5/19-20 - Empty. Put in Grn leaf 5/18 - untouched 5/19, but ♀ went to nest a.m. 5/20 also on 20 ♂ & ♀ saw ♀ take nest material to nest and feed on station lawn dandelions near Anderson while ♂ sang overhead
- 5/21 still empty, ♂ sing + follow ♀
- 5/22 BOTH FULGINS IN FRONT OF LAIR 1620, 10 A.M. ♀ on her empty nest; ♂ CT & BLED
- 5/23 Still empty.
- 5/24 J. egg 1! - changed it for X J. egg. ♂ CT, 21.3 g, seed trap behind Gattiner, implants OK
- 5/25 J. egg 2. " " X CB egg. Aawssshh!! ♀ still not CT + bled.
- 5/26 J. egg 3. changed for X CB egg.
- 5/27 - J. egg 4 Gave her back - They're cool
- 5/28 ♂ CT + INJECTED w/ 2H2O
- 5/29 I on 0:20; ♂ RECT. + BLED FOR 2H2O
- 5/30 I on ~1900, ♂ chirped mildly at my approach, she looked alert but did not flush.
- 5/31 ♀ on.
- 6/1 ♀ fed at Burns Garden - acted as if ~~not~~ incubating, i.e., for just LOVER!
- 6/3 ♀ on.
- 6/5 ♀ on 1900 6/8 ♀ on 1830 1 hatching, 3 eggs 6/9 2 hatchings, 2 eggs @ 0930

JUNCO NEST LOG SHEET (CON'T)

DATE STATUS

- 6/11 not checked - Not weighed??
- 6/12 Did nest watch ch. 2 young in nest, both fed, ♂ fed w/ ♀ staying on; ALSO WEIGHED, MEASURED, + MANICURED NESTLINGS
- 6/14 Banded 2 young
- 6/10 ♀ CT IN NET (LONG TIME TRYING TO EXTRICATE HER ~20 MINVS.); 2 NESTLINGS, 1 EGG FULLY DEVELOPED w/ POSS. PIPPING; NESTWATCH DONE, ♂ NOT SEEN, SHOWED UP AFTER ♀ RELEASED; 1 EGG (HATCHLING?) MISSING - SOURCE UNKNOWN
- 6/15 Watched nest. ♂ feeds ~ as ♀. 2 young.
- 6/18 2 NESTLINGS, PRETTY BIG
- 6/19 NESTWATCH 9:12-10:12 - Fledgling nest. Bled both parents
- 6/20 FLEDGLING WATCH - OVER 60 MINV., 8 ♀ FEEDS, 0 ♂ FEEDS, SAW AGGRESSION BET. CA-NONAL ♂ (ST50) + RIBBEL ♂ (ST53); ST50 ♂ ASSUMING COUPLING DISPLAY NEAR FEEDING ST53 ♀ - REAL INTERESTING... ~~██████████~~; ONLY 1 FLEDG. FOUND OVER IN "SHANTYTOWN"
- 6/21 Saw pair together, ♂ had been singing, pair flew off together - into Shantytown
- ~~6/21~~ ♀ chipped at 2 Driveways.
- 6/22 Fledgling watch, one survived seen so far (which?) → see fledgling ^{while} ^{at} ^{Shantytown}
- 6/24 Hmm. thought I heard a fledgling beg off rd in Shantytown-side near back driveway. ♀ chipped at me a bit, but she is building a new nest in a hemlock tree, right on the Driveway here, ~4-5 ft up. Brand New moss, not even a whole cup yet. As I walked by she went right into the moss "cup", sat for a minute, & arranged things in there.
- 6/25 Fledgling heard calling in Triangle - ~~to~~
- ~~6/26~~ Sat for 60 mins observing behaviour of adults, ♂ building and ♀ courting. He was hanging out by nest waiting for her and when she arrived they "hung out together" and he was generally "showing off" putting up, tail flicking etc.
- 6/29 No fledglings seen
- 6/29 one dove seen - couldn't find pair or fledgling
- 7/2 Tried to find ~~birds~~ - covered all territory, heard a ♀ chip in proper area at 12:10 in water area
- 7/3 Found fledgling - mostly assoc w/ ♂ - originally ~9:00 in hemlock by barrier across road - seem it there a bit. 11:30 saw all 3 in above area ♀ ♂ + Fledge

red/et gm -
7/2
7/3

JUNCO NEST LOG SHEET (CON'T)

DATE	STATUS
7-19	Saw juv. Red/lt brn at station, Sylvaia ♂ sort of mild by a few defecations (a very little chipping, spread tail).

JUNCO NEST LOG SHEET

Nest I.D. SP 10
 Female:

Treatment Group E Impl
 Date Found 5/22/89

✓ Band 2000-24401

Status when found 2 COMBIRD NESTINGS,
 1 J. NESTLING, 1 J EGG

Colors RED @ DK BLUE-R; DK. BLU @ S-L
 Male:

✓ Band # 1750-64121

Colors S @ YEL-L; LT. BLU-R

Loc. SPRING @ END OF SPRING RD.

Eggs laid UNKNOWN # Hatched, Date 7 ~ 5/19 or 5/20

Date Incub. Onset " # Fledged/Fail, Date

Male Bled (Y/N), Date Implant Removed (Y/N), Date

Female Stayed/left

DATE STATUS

5/22 2 combird nestings, 1 J nestling, 1 J egg

5/23 ♀ CT, banded (net), 22.2 g; ♂ CT, 22.3 g; same nest status as 5/22

6/3 Nest empty, fledged?/died?

6/23 ♂ SANG ^{CONTINUOUSLY} ~~CONTINUOUSLY~~ FOR 20-25 MIN. AROUND TERR. - ♀ DESERTED OR DEAD?
 (ABOUT 2 WKS. AGO I SAW PR. HERE TOGETHER CHIPPING AT ME ON BANKS
 OF STREAM)

JUNCO NEST LOG SHEET

Nest I.D. SP 11
 Female:

Treatment Group T Impl
 Date Found 6/23/89

Band _____

Status when found BUILDING NEST

Colors DK BLU - (L), S O FADED ORG OR PINK OR SOMETHING - (R)

Male.

Band # 2021-09865 - STRONG POSSIBILITY
BLK/PINK?

Colors S O BLK/PNK - (R), YEL - (L)
(TAG WRAPPED AROUND TRUNK OF TREE)

Loc. 1/2 - 3/4 mi. up SPRING RD., ~ 1/8 mi. BEFORE END, W50-60 FT. UP IN A ^{OAK} TREE ON RT. SIDE OF TRAIL

Eggs laid _____ # Hatched, Date _____

Date Incub. Onset _____ # Fledged/Fail, Date _____

Male Bled (Y/N), Date _____ Implant Removed (Y/N), Date _____

Female Stayed/left _____

DATE STATUS

6/23 ♂ SINGING, CHIPPING MILDLY, CHASED A VIDEO, + FOLLOWING ♀; ♀ GATHERING "DEERHAIR" (ACTUALLY DRIED GRASS), MOSS, ETC. TO BUILD NEST IN TOP OF TREE
 WATCHED FOR ~ 20-30 MINS. - VERY CONSPICUOUS ON TRAIL

6/30 SAT AROUND FOR 10-15 MINS. WAITING FOR SOME ACTIVITY, BUT NO LUCK - AS QUIET AS A GHOST TOWN UP THERE - A GHOST TERRITORY, YOU MIGHT SAY

JUNCO NEST LOG SHEET

Nest I.D. WVN/WVS/STN Driveway Treatment Group _____
 Female: _____ Date Found 4/23/89

Band 2011-22590 Status when found _____

Colors S-L, Pnk O Dk Grn O Red-R

Male:

Band # 1750-64678

Colors S O Rd/Lt Grn-L, Lt Blk-R

Loc. Grass at STN Driveway.

Eggs laid _____ # Hatched, Date _____

Date Incub. Onset _____ # Fledged/Fail, Date 5/3 - Failed

Male Bled (Y/N), Date _____ Implant Removed (Y/N), Date _____

Female Stayed/left _____

DATE	STATUS
4/23	Saw ♂ there, chipping. Nest had a bit more grass yesterday. a bit
4/24	Same condition (nest).
4/25	Found nest - it is <u>very</u> close to the other start; Good grass stage - ready for deer hair.
4/26	Lots of deer hair this a.m. - No egg.
4/28	VN/EK observe between STN fork + WVS/WVN fork, ♂ very excited
4/29	still empty
4/30	J. egg 1!
5/1	2 S. eggs.
5/3	Failed - nest empty.
5/13	Maybe found re-nest in bank w WVN Turnout? - needs hair, but looks great
7/10	above male in constant attendance of ♀. She didn't seem too thrilled at 10:30am to have them around but after a lot of interaction between them (flitting/foraging) + w/ me watching they "hung out" together. Nest: 13 ♂ also in attendance, but rather secondary - he did not follow her about

JUNCO NEST LOG SHEET

Nest I.D. WVN/Fork-R
 Female:

Treatment Group _____
 Date Found 5/13/89

Band 2011-22590

Status when found ~3/4 Done

Colors S-L, Pnk o Ok Grn O Rd-R

Male.
 Band # 1750-64678

Colors S O Rd/Lt Grn-L, Lt Blu-R

Loc. WVN "Turned"

Eggs laid _____ # Hatched, Date _____

Date Incub. Onset _____ # Fledged/Fail, Date _____

Male Bled (Y/N), Date _____ Implant Removed (Y/N), Date _____

Female Stayed/left _____

DATE STATUS

- 5/13 Found nest - no birds in nest.
- 5/15-16 - Complete & empty, in PM ♂ seen with UI ♀ between the holes on Station road, he sang from the ground, then was alone
- 5/17 Empty - a.m.
- 5/18 1 J., 1 CB egg. Replaced J. egg w/ XJ. Marked CB egg.
- 5/19 did I make mistake? I saw 1 CB egg, marked, 1 CB egg unmarked, 2 unmarked J eggs
- 5/20 J. egg ~~3~~ - changed it for XCB egg - Now 3 eggs. ~~♂ + ♀~~
- 5/21 NEST FAILED; ♂ + ♀ FEED AROUND SEED TRAP (NOT IN CT); OBSERVED CHIPMUNK ATTACK ♂, WHICH FLED; ♀ HOPPED AROUND NEST SITE, ♂ SANG, PERCHED AB
- 5/27 Found new nest - See WVN/Fork-R2

JUNCO NEST LOG SHEET

Nest I.D. WVN/Fack-R2

Treatment Group T Impl

Female:

Date Found 5/27/89

Band 1750-2011-22590

Status when found 1 J. egg

Colors S-L, Pnk, D OK Grn, O Red-R

Male:

Band # 1750-64678

Colors S, O Red/Lt Grn-L, Lt Blu-R

Loc. ^{In} Power cut ~ 20m down hill from Turnout bank, toward Dolinger

Eggs laid 4

Hatched, Date 6/11 4

Date Incub. Onset _____

Fledged/Fail, Date 6/22

Male Bled (Y/N), Date _____

Implant Removed (Y/N), Date _____

Female Stayed/left _____

DATE	STATUS
5/27	Found nest - 1 J. egg
5/28	J. egg 2 - changed for 1 + 2x CB eggs.
5/29	♀ cr + bled. ♀ incubating - Had 3 J. egg. Put her 3 eggs back. Switched for 1 J. egg
5/30	♀ a. 4th J. egg put her 3 eggs back.
6/3	zig watched nest.
6/6	♂ d. injected w/ 2 H ₂ O, released OK
6/7	♂ recd., rebled for 2 H ₂ O. ♀ on, 4 eggs.
6/10	♀ on @ 1345
6/11	bud ♀, 4 hatchlings, did not see ♂
6/14	Did nest watch - strange - no feeding by either - no chipping. ♀ took food to nest area once, did not feed. Weighed + marked four young - both parents defensive.
6/17	weighed + banded 4 young. Both parents chirped at me.
6/21	- Nest empty - looks intact, no sign of fledgelings near nest, I walked back to the station via the power cut, no begging or chipping. would be day 10 today. From nestling growth sheets it looks like they may be one day older. Later found ♂ 1/2 storm fork + Drive way - he didn't chirp or sing - no song fls. Most probably failed - saw ♂ very courtly, ♀ w/him (didn't see bands) in fork.
6/24	she twitches, he sings somewhat. desho arand. No chips. My "ignored" me - No Young heard. Look arand here for pr. + nest - found NO H ₂ O.
6/28	went in Power cut - quiet. 7/2 - song from cement block field ♂ UT ??

who was this?

1750

JUNCO NEST LOG SHEET (CON'T)

DATE	STATUS
7/7	♂ seen by Zig in <u>prolonged</u> encounter with WVN 79 ♂ stand off, WVN 79 ♂ actually had to work back
7/9	caught two ♂ whom fledged WVN 79 young, he was first adult caught, his obviously tiny nearby, does he have a ♀??
7/10	seen with WVN 79 ♀ whose ♂ is injured; SEE NOTE ON FIRST STAPLED SHEET
7/21	SEEN @ SWIMMING POOL IN FIGHT W/ SWIMMING POOL ♂
7/23	Saw ♂ in driveway, foraged leisurely - Sang there, too. Twitted as in flocking behavior.

JUNCO NEST LOG SHEET

R3

Nest I.D. WVN 70-R-4 Treatment Group No Impl
 Female: Date Found 7/1/89

Band 2021-09621 Status when found Grass-stage

Colors S o Blk o Gray-L, DK Grn/Lt Grn-R
 Male.
 Band # 1750-63942

Colors DK Grn o Red o S-R, Yel/DK Blv o Pnk-L

Loc. In bank AGAIN, Tag 60 WVN

Eggs laid _____ # Hatched, Date _____

Date Incub. Onset _____ # Fledged/Fail, Date _____

Male Bled (Y/N), Date _____ Implant Removed (Y/N), Date _____

Female Stayed/left _____

DATE STATUS

- 7/1 Found nest - Grass stage!
- 7/5 1 J-egg in nest - all wet & some Green grass in it (!).
- 7/11 2 eggs were laid, but nest deserted took eggs. There was fresh green grass, chewed string on both ends in nest (chipmunk), & it was all dirty & wet.
- 8/5 Got chipped at vigorously at tag ~ 71 (this happened - it was ♀ - about 3 weeks ago) - couldn't see bands, but it was right at this spot where there is an old nest in bank - never found this nest. but it may be in tree or something!! Both birds really annoyed at us there!
- 8/6 LOCATED NEST ~30' UP IN A MAPLE BRANCH OVERHANGING ROAD; BOTH ADULTS CHIPPING MILDLY; ♀ SEEN CARRYING FOOD WHEN I FIRST ARRIVED, WHICH SHE ATE WHEN ♂ STARTED CHIPPING; NEITHER WENT TO NEST FOR ~20 MINS. WHILE I WAS THERE - CAN'T TELL WHETHER THERE ARE NESTLINGS OR NOT

JUNCO NEST LOG SHEET (CON'T)

DATE	STATUS
5/26	NEST @ TAG 58 NO CHANGE LOTS OF MOSS, GRASS & ACTIVITY @ TAG 61 @ 700 Belongs to this pair.
5/28	Hmm - This nest still grass - maybe deserted? Saw ♀ w tag 61, clipped there. another cavity w/ a smidgen of moss here.
5/29	+ Nest w (69) has 1 j-egg today.
5/30	25 eggs + 1 CB egg.
6/1	Failed - p.m. - nest Torn out - ♀ was in empty cavity w ~ 1730 - flew out.
R2 - 6/3	Maybe new moss in old bank
6/5	AM place camp nest !!
6/7	Egg 1.
6/9	♀ on 3 eggs
6/11	empty
6/18	Hmm - found unfinished nest w tag 65 - torn out low in bank.
6/19	so

JUNCO NEST LOG SHEET

Nest I.D. WVN 70
 Female:

Treatment Group 1st - 1st
 Date Found 4/20/89

Band 2021-09621 (banded w/21)

Status when found ♀ building

Colors S O BLK O Org-L, DK Grn/Lt Grn-R

Male:
 Band # 1750-63942

Colors DK Grn O Red O S-R, Yel/DK Blu O Pink-L

Loc. WVN Tag 60 - in bank - far 61 is ~~deserted~~ from LW

Eggs laid 2 2

Hatched, Date 5/2 ~~or so~~ - deserted

Date Incub. Onset _____

Fledged/Fail, Date _____

Male Bled (Y/N), Date _____

Implant Removed (Y/N), Date _____

Female Stayed/left _____

DATE STATUS

4/21 Nest fine grass stage by 1830 - Zig saw ♀ building 4/20.

4/23 Deer hair - looks done

4/24 No egg. birds nearby.

4/26 still empty.

4/29 1 J. egg

5/1 2 J. eggs they look quite different from each other - one more heavily pigmented at base, the other lighter at base, but has more speckles on rest of egg.

5/2 Still 2 J. eggs - same as yesterday - maybe she'll desert.

5/3 Same - found start w Tag 65.

5/5 Think I found her re-nest - in opposite (W) bank, Tag 60 - moss.

~~5/8 her 2 J. eggs. Took out the 2 egg, gave her back her 2 J. eggs (1 got a small hole in it, which I glued, so might not hatch, so I put in a J. egg in - from WVN 70 - which is fertile & viable) now~~

5/9 ~~the~~ Same - no building by anyone.

5/14 New nest still moss - I think active - both Zig & I saw birds there.

5/16 Hmm - no more added - not sure what she is up to.

5/18 Not any change - found another small start near Tag 61 one.

5/20 Can't find a Thing!!

5/25 A GRASS LINE D NEST AT ASINI TAG 58.
 (IT TURNS OUT THAT THE PAIR IS AT TAG 61). THIS MORNING I SAW A
 FRESH EXCAVATION ON BANK + MARKED IT & PUT OUT A LITTLE BAIT DOWN
 THE ROAD. AT 3:30 PM I SAW BOMAT BAIT PILE & WARY CD ♀
 GO IN ~~AND~~ OF EXCAVATION 4 TIMES. THEY WERE ALSO THERE AT 5:15
 WHEN I CAME BACK

WVN-71 (2)

JUNCO NEST LOG SHEET (CON'T)

DATE	STATUS
6/23	LOSS ONLY ONE YOUNG IN NEST: ♀ FLEW AWAY.
6/24	DID NEST WATCH IN AM (8:15-5:15) Banded 1 Young.
6/26	STILL ONE YOUNG IN AT 1:30 PM.
6/27	Did nest watch - still one nestling
6/28	1 Young ok.
6/28	SETUP NET @ 7:00 → Young in.
6/29	Young fledged by 9:00. We caught it, & both parents bled & processed 1 Young.
7/1	Saw both parents w/ Tag 13, heard young. They clipped a little.
7/2	" " " " Tag 14, saw young, ♀ fed, ♂ + ♀ together, ♂ sang.
7/6	SAW BOTH PA. TAG 20 SAW FLEDGLING (WHT/LT GRN) - DID NOT STAY LONG BEG. OF LUNCH - WEST SIDE OF RD.
7/10	SAW ♂ (bands) ♀ + fledgling (no bands seen) together near tag 16, but adults still with young
7/12	SAME AS ABOVE, BOTH ADULTS FEEDING, FLEDGLING BIG & GOOD FLIER
7/15	Saw young - ♀ was clipped white/light green - in woods near tag 13
7/20	SAW ♂ FEEDING WHT/LT GRN, TAG 17, & CHASING UB JUV; ♀ NOT SEEN - WHO IS SHE NESTING? ...
7/22	♂ (bands not seen) singing from tag 14 old nest site, white/green young was feeding in rood, looked fully healthy ∴ still at home, ♀ not seen
7/26	♂ ct. implant removed blood samples taken, ♂ has back pox on center toe right foot

JUNCO NEST LOG SHEET

Nest I.D. WVW71-R

Treatment Group T impl

Female:

Date Found 5/31/89

Band 2021-0000

Status when found Grass Stage

Colors 9 0/0 Grn/Brown-L, Rd/white-R

Male:

Band # 2031-33021

Colors S O Pnk o Lt Grn-R, Blk/HT Pnk-L

Loc. WVW Tsg 14, Small Bank on E Side

Eggs laid 5 # Hatched, Date expected ~ 6/17-18

Date Incub. Onset ~ 6/6 # Fledged/Fail, Date _____

Male Bled (Y/N), Date _____ Implant Removed (Y/N), Date 1/7/29

Female Stayed/left _____

DATE	STATUS
5/31	Found nest - Grass stage. in old start.
6/1	Complete!
6/3	- Egg 1 (J).
6/5	3 eggs. both in area.
6/6	VN caught ♂, for 2 labeled water, ~1530.
6/7	rec. dt. for rebleeding for 2H ₂ O, ♀ on 5 eggs, checked implant, OK
6/9	♀ on @ 730
6/10	♀ off @ 1100; ♂ CT + PLUGGED INTO RADIO TRANSMITTER
6/11	♀ still on 5 eggs. ♂ not seen but detected in 4 visits
6/12	♂ near nest, radio transmitter on but antenna curved around body and interfering with flight - should recatch
6/13	5 warm J. EGGS IN PM - SET UP NET W/ BAIT/ILE; ♀ + ♂ AWAY @ 2:30, ♀ ON @ 3:20
6/14	♀ on 0915, 5 eggs, ♂ radio signal in vicinity - at 1100 ♀ away, ♂ not picked up by receiver, later in day 2y caught transmitter was gone!
6/15	DID INCUBATE WATER
6/17	STILL 5 EGGS @ 720
6/18	1 Young @ 220
6/19	4 YOUNG, 1 ETS @ 720. SET NET FOR BLEEDING; STILL 4 YOUNG IN PM - FLUSHED ♀ ACCIDENTALLY; TRANSMITTER FOUND; SAW A STRANGE ♂ CHIRPING ABOVE NEST - MMM... WHOEVER DOES NESTWATCH PLEASE CONFIRM THAT THE ♂ IS STILL AROUND
6/21	NESTWATCH (45 YOUNG) ♂ FEEDING + SINGING A LOT; NESTLINGS WEIGHED, ETC. - ONE FOUND ONLY SAW 4 - BUT THERE MUST HAVE BEEN 5 - I WILL ADD STATS ON NESTWATCH ACCOUNTING FOR 5

BELOW NEST, COLD, WET, & SLIGHTLY WEAR - REPLACED IT

JUNCO NEST LOG SHEET

Nest I.D. WVN 71 Treatment Group _____
 Female: Date Found 4/23/89
 Band 2021-09654 Status when found ♀ building ~ grass
 Colors S O Org O Grn/Brown-L, Rd/White-R
 Male: Band # 2031-23021
 Colors S O Pak O Lt Grn-R, Blk/HT Pak-L
 Loc. WVN Tag 16 - stream bank
 # Eggs laid 3 # Hatched, Date 5/20 → 2 hatched
 Date Incub. Onset 5/8 # Fledged/Fail, Date exp. 5/31
 Male Bled (Y/N), Date _____ Implant Removed (Y/N), Date _____
 Female Stayed/left _____

DATE	STATUS
4/23	Saw ♀ building here. She chipped. This cavity w/ moss has been here several weeks. She apparently abandoned another nest stud out on the Road.
4/24	Some grass. Still not real far along.
4/26	OK! Looks great - nice grass stage w/ ~ 1830.
4/29	Deer hair today. 4/29-4/30 ♂ spending time on station near woodpile + singing
5/1	Still empty.
5/2	1 CB egg only.
5/3	Same.
5/4	1 J-egg - sub. ed 1 X J-egg.
5/5	J-egg 2, put in X CB egg - ct + Bled May.
5/6	Still just the 1 J-egg - the sub one, plus the 2 CB eggs.
5/7	still 1 J, 2 CB eggs - Cold (Snow) - did not replace her 2 on a.m.
5/8	♀ on 1 still 2 CB, 1 J. egg. gave her back her 2 J-eggs + took out CB. 1 of the J-eggs is the X J-egg from WVN 70. ↑ Fertile + viable
5/10	♀ on - all OK.
5/11	♀ on
5/12	Tried to catch ♀ today, but no luck. ♂ Sang ALOT around nest, also chased chipmunks + smaller birds (warblers).
5/13	♀ on - ct + Bled ♀ - all OK.
5/14	" watched nest. all OK 3 J-eggs
5/15	at this ♂ at Burns cottage at 1930 (1)
5/16	only 2 J-eggs - the X (from WVN 70) + one of hers (1). Both appear developed.
5/18	♀ on - all OK.
5/20	at 1530 1 hatching, egg 2 5' below nest VN put back in egg marked J, probably pipped. 2 young at 1700 - egg 2 unpipped. 1st young much bigger than newly-hatched.

WVWF1, cont

JUNCO NEST LOG SHEET (CON'T)

DATE	STATUS
5/20	♂ fights w/ Green Tark ♂ in Ferns, 1/2-way to Grn Tark.
5/21	Set 4 eggs. Did poor nest watch
5/22	Did nest watch, 2 junco babies (look almost the same size) 1 egg; ♂ CT + IMPLANTS OK 20.6 g BLED (SEED TRAP)
5/23	Did good nest watch, 2 juncos, 1 egg (babies look similar, but definite size difference) weighed young.
5/24	Did nest watch. I drove flush her to check nest.
5/26	Banded 2 yng.
5/27	Watched nest.
5/28	NEST FAILED - 745 ♂ SINGING SILENTLY OVER ROOF NO SIGN OF ♀.
5/29	Saw ♂ around tag 17-18.

JUNCO NEST LOG SHEET

Nest I.D. WVN 73 - R
 Female:

Treatment Group E impl
 Date Found 5/2/89

Band 2021-09207

Status when found Grass Stage nest

Colors Red @ S-L, Red @ Lt Gr- R

Male:

Band # 2021-09186

Colors S @ Lt Grn @ Yel-L, Yel-R

Loc. WVN Tag 32, in "hump"-side part

Eggs laid 4 # Hatched, Date 6/7^{exp.}

Date Incub. Onset 5/26 # Fledged/Fail, Date _____

Male Bled (Y/N), Date _____ Implant Removed (Y/N), Date 7/19

Female Stayed/left _____

DATE STATUS

- 5/2 Found nest. Saw pr. together - ♀ chipped a little, but wasn't too agitated. ♂ made little noises w/ ♀.
- 5/3 Lots of deer hair - birds nearby.
- 5/5 Some deer hair. 5/7 a CB egg -
- 5/8 Failed ~ nest a bit dug up, CB egg gone.
- 5/10 " "

5/14 Oh boy - J-egg 1 today!! Exchanged it for XJ egg. Got chipped w/ there

5/16 - ok - still only 1 J-egg - she is building a new nest in same hump in middle - there is moss today. By 1830 very good Grass stage

5/17 saw ♀ with large load of hair, she took it to new site, ♂ very excited, ♀ avoids him, note pair not same as birds hatched above *

See WVN 73 - not this pair

5/19 EK saw ♀ at Tag 32. Nest empty - this ♀ chipped w/ me w/ roots & stuff in bill. Found a moss start in side of same hump.

5/20 → Nest empty (finished one) → new start has grass.

5/21 New nest is complete! Saw this ♀ there this a.m.

5/22 Ugh - still empty.

5/23 - Egg 1 Today - replaced it w/ XJ-egg.

5/24 Egg 2 " @ 751 - changed it for XCB egg, ♂ ad bled ♂ + ♀, they have escalated fights with reinbar pair WVN 73 (!)

5/25 Egg 3 - changed it for XCB egg. all ok, later in A.M., eggs cool feared ♀ had deserted, but she returned

5/26 Egg 4 - ♀ there - on later.

5/28 ♀ on.

5/29 empty at 1100 - failed

6/1 saw ♂ at trap site near failed nest - alone

6/1 heard song near here
 bands not seen
 7/9 or 10 UN, implant removed, (WVN 73)

R ↓

WVNTB-#

JUNCO NEST LOG SHEET

Nest I.D. ~~WVN 75-R?~~

Treatment Group E

Female:

Date Found 7/12/89

Band 203E-33495

Status when found 3 J EGGS

Colors White O. Lt green / Lt bl-R White / red O-S-L

Male Band # 2031-(33171)? 33121

Colors red / Lt bl O-S - 2 red / Lt bl O red-L

Loc. Very close to first nest - east bank, ~ TAG 34 WVN; PAST BAIT PILE (MARKED RED O YEL) AT TAG 33; E BANK

Eggs laid _____ # Hatched, Date _____

Date Incub. Onset ~ 7/12 (11) # Fledged/Fail, Date _____

Male Bled (Y/N), Date _____ Implant Removed (Y/N), Date _____

Female Stayed/left _____

DATE STATUS

7/12 FLUSHED ♀(?) UP FROM BAITPILE @ TAG 33, SHE CHIPPED, COULD NOT SEE COLORS; SAW PA. TOGETHER ~~_____~~ BRIEFLY. NEST HAS 3 J EGGS EX/VN saw ♀ bands; she was incubating, VN said eggs were fresh he marked them. ♂ was in vicinity of nest (saw bands), I heard a fledgling beggy, so ♂ is still feeding young from last brood, he carried food, AUB juv was in area, I deployed him several times

new nest cluster in wood 17 days

7/13 VN caught ♀, ♂, and the fledgling. ♀ caught alone ~ 1750, ♂ & fl caught together in nest at 1830, still 3 eggs

7/14 Incubation watch 3 eggs, 9:45-10:45 LAR. Fledgling still about. Both adults feeding at bait pile.

7/15 INCUB. WATCH - BOTH PARENTS APPEAR TO BE FEEDING FLEDGLING (♂ FOR CERTAIN, ♀ MOST LIKELY); 3 EGGS; BOTH FEED @ BAITPILE TAG 33, FLEDGLING SPENDS TIME NEAR NEST (A-X RD.)

7/17 ♀ on, ♂ in PM, 1600, and injected for 2-label water, returned to field ~ 1730

7/20 ♀ on 3 eggs. 9am.

7/22 ♀ on 3 eggs - Nest watched (INCUBATION) (DAY 9 - DAY 12)

7/23 NEST EMPTY, NO TRACE OF CONTENTS - FAILED

JUNCO NEST LOG SHEET (CON'T)

DATE	STATUS
6/28	FLEDGLING WATCH DONE (25 MINS.); SAW ONE FL. (BLK-R, I THINK) HIGH UP IN TREES ~150 YDS. N FROM NEST, SAME SIDE, ~20-30 YDS INTO WOODS; FLDG FLIES WELL, APPROACHED PARENTS; ♀ CHIPS LOT, ♂ NOT MUCH; ♀ FED 4X, ♂ 1X + 1 CARRY, FEED NOT SEEN; NO SINGING ♂
7/1	Tag 40 - Saw ♂ feed BLK-R Fledgling. $\frac{1}{2}$ tail - He approached it, though it could fly well. ♀ chipped alot.
7/2	looked for family, no find
7/6	FOUND 1 FLEDGLING (BLK-R), WATCHED FOR 35 MINS. - FLEDGLING FORAGED SOME, VERY MATURE, REGGED LOUDLY & PERSISTENTLY, FOLLOWED ADULT & APPROACHED MANY TIMES W/OUT GETTING FOOD; ♀ VERY CALM, LITTLE CHIPPING, NO FEEDING SEEN; ♂ SANG SOME, TWITTERED SOME, LITTLE ALARM, MAY HAVE FED; MAY BE THAT ♀ IS REBUILDING - SAW THEM NTAG 38, WEST SIDE OF RD., 50-100 M INTO FOREST - 95% CERTAIN THAT ALL OTHER FLEDGLINGS MUST BE DEAD
7/8	FOUND SAME FLEDGLING, BLK-R, WATCHED FOR 20 MINS., SAW 1 ♀ FEED (MAY PROBABLY MORE THAT I DIDN'T SEE), 0 ♂ FEEDS, 20 ♂ SONGS; FLEDGLING FORAGED ON ITS OWN; TAG 38-39; NO INDICATION THAT ♀ RE-NESTING
7/12	♂ CHIPPED SAME PLACE AS ABOVE, E SIDE OF RD., ♀ TWITTERING A LOT, CARRIED FOOD - HEARD FEEDING BUT DID NOT SEE FLEDGLING; RE-NESTING??
7/10	one (or two) adults and baby gone at old nest site tag 33 see WVN 73-II
7/17	caught and injected ♀ for 2 label water
7/18	♀ only, recaptured ♀ for 2 label water
7/22	Samman reports that egg have not hatched. I saw SO black-L: black-R young feeding at baited nest site just N of nest and nest see a few ♂
7/24	♂ fledgling SO BLK-L, BLK-R at tag 38

JUNCO NEST LOG SHEET

Nest I.D. WVN73-R2
 Female: _____

Treatment Group E impl
 Date Found 5/25/89

Band 2031-495

Status when found ♀ building

Colors WHITE O LGW/LTCL (R) WHITE/NOOS (A)

Male Band # 2031-33121
2

Colors Rd/Lt Blu O S-R, 2 Rd/Lt Blues O Red-L

Loc. ~ 7g, 34, E side of road, ~ 10m in, on ground under log, flap will catch you

Eggs laid 4 # Hatched, Date 6/2

Date Incub. Onset 6/1 # Fledged/Fail, Date 6/23

Male Bled (Y/N), Date _____ Implant Removed (Y/N), Date _____

Female Stayed/left _____

DATE STATUS

- 5/27 - Nest complete & empty.
- 5/28 still empty.
- 5/29 egg 1, did not mark or remove
- 5/31 3 J-eggs.
- 6/1 4 J eggs
- 6/3 ♀ on.
- 6/5 0 on
- 6/7 " " 4 eggs.
- 6/8 ♀ CT + BLED IN NET; 4 EGGS STILL (NOT BLED IN NET, BUT CT IN NET - SORRY)
- 6/9 ♂ on for 0 → 1030-1200. CT ♀.
- 6/10 TRIM on → on 2 hours @ 115-1345 NO LUCK.
- 6/11 ♀ on 4 eggs, 20 PV
- 6/12 1 hatching, 1 pipped egg, 2 unpipped eggs at 1200
- 6/13 ♂ CT IN NET, BLED (A) - 4 HATCHLINGS IN AM (FLUSHED ♀)
- 6/14 watched nest - 4 h.do - Both fed
- 6/15 4 NESTLINGS WEIGHED, ETC.
- 6/17 CAUGHT ♂ @ 428 PM 2-HO
- 6/18 NOCTURNAL ♂ @ 308 PM 2-HO Banded 4 young.
- 6/21 4 YOUNG STILL - NESTWATCH ABORTED (♀ CHIPPING) - BLIND DIDN'T HELP
- 6/23 4 YOUNG FLEDGED - PARENTS NOT CT - NEST FLEDGLINGS DID NOT NET. TO NEST - FOREIGN J ATTRACTED WHEN FLEDGLINGS GRABBED, BUT COLOR NOT SEEN → nestlings were replaced in nest (after spinning) But 5 mins later they were out + about.
- 6/26 1300 AM SAW BOTH ADULTS AT OLD CAMP SITE. ♀ CHIPPED LIKE A FLEDGLING SOMEHOW.

2031-33121

JUNCO NEST LOG SHEET

Nest I.D. WVN 73

Treatment Group _____

Female: _____

Date Found 5/2/89 - 5/16/89

Band _____

Status when found Empty, complete

Colors Wht/red O S-L, white O Lt Blu-R

Male _____

Band # 2031-33121

Colors Red/Lt Blu O S-R, 2 red/Lt Blues O Red-L

Loc. WVN Tag ~ 34, in bank

Eggs laid _____ # Hatched, Date _____

Date Incub. Onset _____ # Fledged/Fail, Date _____

Male Bled (Y/N), Date _____ Implant Removed (Y/N), Date _____

Female Stayed/left _____

DATE STATUS

- 5/2 Found nest - heard a couple of J.'s twittering in woods, but didn't see them
- 5/3 Still empty...
- 5/5 Still empty - Today looks tossed, as if ♀ laid an egg & chipmunk got it - sort of a dug-out area in nest.
- 5/6 a J. egg today...
- 5/7 Still just a J. egg (same or not?) replaced it w/ XCB egg. Snow & cold.
- 5/8 J. egg #2 - switched this egg for XCB egg.
- 5/9 - Hum - still same 2 CBeag - Rain -
- 5/10 Same -
- 5/11 Same - took eggs
- 5/16 → ok - moss then grass by 1830 - nest in middle of the hump.] set hole WVN 72
- 5/17 E & V saw ♀ w/ hair - see WVN 72 description.
- 5/18 Empty - complete.
- 5/19 See WVN 72
- 5/20 Empty.
- 5/21 J. egg 1! Neighbor nest complete -
- 5/22 Nest empty.
- 5/23 " "
- 5/24 " " fishes with neighboring pair frequent
- 5/25 found new nest, in woods. Or ground around old nest, rim but no lining
- 5/26 saw ♀ take hair from the old nest, but she dropped it

WVN 73K

WVN 73K-L

JUNCO NEST LOG SHEET

Nest I.D. WVN74-R
 Female:

Treatment Group I Impl
 Date Found 6/1/89

Band 2031-3313

Status when found Complete-empty

Colors S O DK Em O Wht/DK BLU-R, Yel-L

Male:

Band # 2031-33276

Colors Red O S-R, Red O Yel-L

Loc. WVN-Tag 25 - in Stream - same place (small bank) as last year

Eggs laid _____

Hatched, Date _____

Date Incub. Onset _____

Fledged/Fail, Date _____

Male Bled (Y/N), Date _____

Implant Removed (Y/N), Date 7/7, Y

Female Stayed/left _____

DATE STATUS

- 6/1 Found nest - complete & empty.
- 6/3 Empty.
- 6/5 still empty
- 6/7 Hmn - 1 CB egg only.
- 6/12 - Still same - no go
- 6/17 Looked all over terr. for nest - no go.
- 6/28 Saw ♂ singing continuously near garbage dump.
- 7/2 Saw ♂, he sang then retreated into woods on west side, at first seemed HOKA, but no sign of a ♀
- 7/6 saw ♂ → TAG 28, WEST SIDE OF RD., SANG CONTINUOUSLY FOR 15-20 MINS. ♀ DEAD?
- 7/8 → singing in drain approx. th.
- 7-11 ♂ singing softly to unbanded ♀ at tag 29. She chirped three (right at the tag)
- 7/17 removed implant, bled ♂, 1ory implant was present (removed) start out found



JUNCO NEST LOG SHEET

Nest I.D. WVN 74 Treatment Group T. mel
 Female: Date Found 5/18/89
 Band 2031-33136 Status when found MASS
 Colors S or DK Grn or Wht/DK Blu-R, Yel-L
 Male: Band # 2031-33276
 Colors Red or S-R, Red or Yel-L
 Loc. WVN Tag "26" in stream → Re-used start on ~~Grass~~-Tag 27
 # Eggs laid 4 # Hatched, Date 6/7
 Date Incub. Onset 5/26 # Fledged/Fail, Date _____
 Male Bled (Y/N), Date _____ Implant Removed (Y/N), Date _____
 Female Stayed/left _____

DATE	STATUS
5/14	Moss start in cavity - Saw ♂ w Bait
5/16	Same -
5/18	The nest w Tag 26.5 now has grass → W. side of Rd.
5/19	Grass Hair today.
5/20	Complete!!
5/21	still empty.
5/22	" "
5/23	" "
5/24	ONE egg - 750 - changed it for X J. egg.
5/25	Egg 2 - changed for X CB egg.
5/26	♀ on @ 641-
5/27	Returned her 3 J-eggs. J. egg 4. Both Pr. chip - I can see the ♂ now. - ♂ CT + BLED
5/28	♀ on - CT & Bled ♀ - mass = 21.7 ♀ on later (1515)
5/29	<u>Failed</u> Nest Completely torn out from cavity.

Found Re-nest

JUNCO NEST LOG SHEET

Nest I.D. WVN/valley 2 Treatment Group _____
 Female: _____ Date Found 5/28/89

Band UB? Status when found Complete, empty

Colors _____
 Male _____
 Band # _____

Colors _____

Loc. WVN- Valley Rd, beginning, past 1st 2 humps, in "bank"

Eggs laid _____ # Hatched, Date _____

Date Incub. Onset _____ # Fledged/Fail, Date _____

Male Bled (Y/N), Date _____ Implant Removed (Y/N), Date _____

Female Stayed/left _____

DATE STATUS

5/28 | Nest complete - empty. Saw a ♀ in trees nearby - UB? ~~was~~ same place as old
 | Start nest.
 6/1 | Failed - nest tear out! I J-eggs in remaining cavity. Took it.

JUNCO NEST LOG SHEET

IMANT - T

Nest I.D. WVN 75

Treatment Group _____

Female:

Date Found 5/20/89

✓ Band 2031-33499

Status when found Mass Stage

Colors OR40 LTBL0 ORG ② WHITE/ROD ⑥ ↓ OS

Male:

✓ Band # 2031-33486

Colors WHITE/ROD ① ② Y8L1040Y8L

Loc. WVN Tag 44 - in bank

Eggs laid _____ # Hatched, Date _____

Date Incub. Onset _____ # Fledged/Fail, Date _____

Male Bled (Y/N), Date _____ Implant Removed (Y/N), Date _____

Female Stayed/left _____

DATE STATUS

5/20 Found new moss nest. No one here.

5/22 Has hair!

5/23 Fully Hatched - NO EGG

5/24 " " " "

5/25 " " " "

5/26

ONE J EGG ♀ NO HAIR. PUT BAITPILE A LITTLE NORTH OF MARKER
Failed by ~ 1930. Nest torn out, but 1 J-egg still intact in there.

7/18 Saw ♂ sing w Tag ~ 46 at bait pile.

WVN 76 CONT.

JUNCO NEST LOG SHEET (CON'T)

DATE	STATUS
------	--------

JUNCO NEST LOG SHEET

Nest I.D. WVN76

Treatment Group No IMPLANT

Female:

Date Found _____

Band 4A 2000-94131

Status when found _____

Colors 3 pink/lt blues-R, LT Blu O S-L

Male. 2000-94129

Band # 4B → ~~2000-94131~~

Colors lt Bl O S-R, lt. o Red-L

Loc. 1.3 miles N of Waspur trail head, on east side, loam bank

Eggs laid 4 # Hatched, Date 6/14

Date Incub. Onset _____ # Fledged/Fail, Date cyg 6/26

Male Bled (Y/N), Date _____ Implant Removed (Y/N), Date _____

Female Stayed/left _____

DATE STATUS

- 6/9 ♀ INCUBATING, ♂ CT FOR 2H2O
- 6/10 ♂ RE-CT FOR BLEEDING FOR 2H2O EXP.
- 6/13 ♀ INCUBATING
- 6/14 3 NESTLINGS, 1 EGG; ♀ CT IN NET, BLED - ~~hatched~~ hatch day 0
- 6/15 ♂ removed afternoon
- 6/16 4 young, did nest watch on ♀ - ♂ was removed when!?!
weighed 4 very cold young, they were 1/2 normal weight
for this time so I will measure again day 4.
- 6/17 2000 CHECKED SITE FOR LARRY NESTLINGS. ♂ ♂ SINGING
IN MORN NORN NESTS - CONSIST SEE
- 6/18 weighed - only 2 left
- 6/20 weighed 3 young day 6, did not band
- 6/21 WEIGHED 3 YOUNG, DID NOT BAND - VERY SMALL - PUT ONE SILVER BAND
ON LEFT LEG OF ONE NESTLING
- 6/23 Tried to catch Repl. ♂, no luck!! Sang nearby - did not go near
nest. 3 young - starving. Banded 2 remaining ones - smallest was 8.2g,
only a silver band. ~~Next~~ Biggest I put colors on; the one Mike banded
on 6/21 had a distorted, bent tarsus on the leg w/ the band.
- 6/24 ♀ CT + BLED; ♂ NOT CT BUT SEEN IN FIGHT w/ ♀ + OTHER J; 3 NESTLINGS,
↳ (19.9 g)
VERY SMALL + WEAK; ♀ SEEN CARVING HUGE AMOUNTS OF FOOD, NEST. BEGGED
LOUDLY
- 6/27 Young OK
- 6/28 ♂ + Repl. ♂ + Bled him. Fledged ³ young, but put them back in nest. Legs have
Yucky growths; RETURNED REG. ♂ TO TERR. - NO J'S AROUND, SO NOTHING MUCH HAPPENED

JUNCO NEST LOG SHEET

Nest I.D. WVN ~~7~~ 7
 Female:

Treatment Group UNIMPLANTED
 Date Found _____

✓ Band UB ~~2000-94406~~

Status when found Stratman and Young found nest

Colors DK BLU O S - L, 3 LT GRN/WHITES

✓ Male.
 Band # UB 2000-94132

Colors LT BLU O S - R, RED O DK BLU - L

Loc. beyond W/S spur road/bk/yel flag found by Jamis post dice 0.35 miles N of W/S spur

Eggs laid 4 # Hatched, Date _____

Date Incub. Onset _____ # Fledged/Fail, Date _____

Male Bled (Y/N), Date _____ Implant Removed (Y/N), Date _____

Female Stayed/left _____

DATE STATUS

- 6/11 ♀ on 4 eggs not b (and new) but not chucky either - could be WVN/Valley 2 ♀?
- 6/12 No, this UB
- 6/15 ♀ CT & BLED + BANDED; 4 J EGGS TODAY (NEEDS TO BE REBANDED w/ 3 LTGRN/WHITES) ✓
- 6/16 4 J EGGS, ♂ CT IN NET + BLED, THEN BANDED
- 6/27 LOOKED FOR NEST BUT COULDN'T FIND IT - LOCATION WAS RECENTLY FLOODED SO NEST MAY BE FLOATING DOWN ~~THE~~ NEW RIVER AT THIS POINT...

JUNCO NEST LOG SHEET

Nest I.D. WVN 78
 Female:

Treatment Group NO IMPL
 Date Found 6/21/89

Band UB 940

Status when found NEST START?

Colors → [unclear] [unclear]

Male.

Band # UB

Colors _____

Loc. ~ 1 MI. ABOVE N. OF WAASPUR, RT. BANK, BIG FLAG ON LEFT SIDE, SMALL ONE ABOVE NEST

Eggs laid _____ # Hatched, Date _____

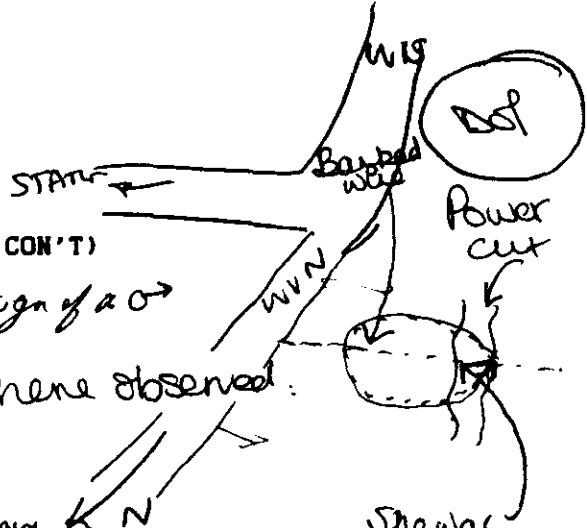
Date Incub. Onset _____ # Fledged/Fail, Date _____

Male Bled (Y/N), Date _____ Implant Removed (Y/N), Date _____

Female Stayed/left _____

DATE STATUS

- 6/21 ♂ + ♀ TOG., FLUSHED UP FROM RT. BANK, CHIPPING @ ME; NEST FOUND BUT WET, LOW IN BANK, NO HAIR - MAY NOT BE ACTUAL NEST (??); TOWN OUT NEST FOUND IN ROAD ABOUT 50 MET. UP FROM THIS NEST
- 6/23 NEST DEFINITELY NOT THE CURRENT ONE, BUT THERE MUST BE ONE AROUND HERE SOMEWHERE... DID NOT LOOK FOR NEST, BUT COULD TELL THIS ONE NOT BEING USED OR DEVELOPED!
- 6/27 STILL NO SIGN OF ACTIVE NEST - ADULTS NOT SEEN LATELY



7/10 EKAM saw ♀ (birds ok) in JUNCO NEST LOG SHEET (CON'T)
 Power cut near banded well
 free to DOLPHIN ♀ upset, yom bop/d
 ∴ at least one still alive, no sign of a ♂

7/10 cont
 7/11
 7/12
 7/15
 7/16

DATE	STATUS
	in "attendance" area where observed.
7/11	NO SIGN OF FAMILY - LOOKED FOR > 30 MIN. N
7/12	STILL NO SIGN OF FAMILY 730 minutes! or <u>more than 30</u> originally here
7/15	Searched 30 mins, no sign of <u>anyone</u> !
7/16	GAVE IT ABOUT 15 MINS, NO SIGN OF ANYONE - GAR NIGHTS (??)

Note change in ID

2 label H2O
Implant

JUNCO NEST LOG SHEET

Nest I.D. WVN 79
Female:

Treatment Group NO XAPL
Date Found 6-24

Band UB 2000-9400F

Status when found 4 eggs

Colors 2LT BL / DK BL (C) LAV US (C)

Male Band # 2021-09373 2021-09369

Colors Sooty thro yellow (C) DK BL (C)

Loc. a Ray post Fork WVN. low in bank on east side of rd.

Eggs laid 4 # Hatched, Date (6-28) or 6-29

Date Incub. Onset _____ # Fledged/Fail, Date exp 7/9

Male Bled (Y/N), Date _____ Implant Removed (Y/N), Date _____

Female Stayed/left _____

DATE STATUS

6-24 found ♀ on 4 eggs

6-25 740 SET UP NET & CAUGHT ♀, ♂ NEARBY
6/26 THRO BL ♀ @ 845. FORTHOOD NOT NET. NO LUCK!

← 6/27 ♀ CT & BLED (NET) - STILL INC 4 J EGGS

6/30 3 nestlings, 1 egg - look like nestlings ~ day 1 or 2 (not day 0) - Did not feed ch - not so good

7/1 weighed 3 young - Day 3. - Took un hatched egg - Developed.

7/3 watched by Zig Caymo + bled ♀ for 2 label water

7/4 Dan, Mike and Licia banded + probed 3 nestlings. Neither parent near - k. as by a lot - look good. recaptured ♀ for 2-label water

7/6 NESTWATCH PERFORMED - LOTS OF FEEDING (17x/60 MIN.), BOTH PR., NO BROODING

7/8 bled ♂, then injected him for 2 label water, note change in band # and color from what we expected! 2 young OK.

7/9 young left nest 0935, we caught 2 could not find third, took feathers Caymo ♀ + weighed, but too late to bleed. Caught WVN Ark ♂, bled him an "intruder"? The "intruder" has a sprained wing, probably from when he been here for 2 label water so we did not catch him. young and ♀ crew of low-mass bled ♀ (small antibody for DNA) he young had not gained mass since day 8, weighed 12.5 g.

7/10 WVN/WIS Fork ♂ in constant attendance of very noisy ♀. She alternated between chirping and fledgling chirping. See fledgling watch for details. He was around from 10:30 → 11:30. ♂ 138 also around but not

JUNCO NEST LOG SHEET

Nest I.D. WNS 170 - R3

Treatment Group E Impl

Female:

Date Found 7/17/85

Band _____

Status when found COURTING/BUILDING

Colors _____

Male:

Band # 2011-22299

Colors LT BLU/DK BLU O S O BLU-R, CT BLU/DK BLU -L

Loc. JUST PAST JAG 57, LOWER BANK

Eggs laid _____ # Hatched, Date _____

Date Incub. Onset _____ # Fledged/Fail, Date _____

Male Bled (Y/N), Date _____ Implant Removed (Y/N), Date _____

Female Stayed/left _____

DATE STATUS

7/17 ♂ CHIPPED ABOVE ♀ ON LOWER BANK, CARRIED MOSS; ♀ HAS A REGROWING TAIL, NEW ♀ (REPLACEMENT) - COLORS NEED VERIFICATION; LOOKED BUT COULDN'T FIND NEST IN PM, ♂ CARRYING LEAVES + MORE MOSS, PUT THEM SAME PLACE - STILL CAN'T FIND NEST - IS ♂ REALLY BUILDING OR WHAT? ♀ NOT SEEN CARRYING NESTING MATERIAL

7/22 BRUSHED LOWER BANK IN AREA WHERE PAIR WAS SEEN - NOTHING

JUNCO NEST LOG SHEET

Nest I.D. WVS170-R²

Treatment Group E IMPL

Female:

Date Found 6/12/89

Band 2031-33484

Status when found Grass stage

Colors Wht/Red o s-l, 2 Or/light Grns-R

Male:

Band # 2011-22299

Colors Lt Blv/DK Blv o s o Blk-R, Lt Blv/Blk-L

Loc. In bank (uphill) of Road ~ tag 64 - in old start

Eggs laid ? # Hatched, Date 6/30

Date Incub. Onset 6/18 # Fledged/Fail, Date _____

Male Bled (Y/N), Date _____ Implant Removed (Y/N), Date _____

Female Stayed/left _____

DATE	STATUS
6/12	Found nest - grass stage - nicely formed.
6/13	Some hair
6/15	1 CB egg.
6/16	1 CB egg, 15 eggs
6/17	1 CB egg, 2 JE eggs, ♀ on @ 800, 1030 + 1425 (Mus. DE nearby)
6/18	♀ on @ 715
6/19	♀ on 2 J., 1 CB egg
6/22	♀ on.
6/23	" "
6/24	Incubation watch 2 J 1 CB, ♀ on ♀ more than 50% ♂ in area + singing: ♀ off @ 730 ♀ on @ 1030 ♂ singing
6/25	♀ on AT 715
6/26	♀ on several times. took CB egg @ 400 PM.
6/28	♀ on ♂ flushed up from bank ~ 25 m. S. of nest - then he chipped w me.
6/29	♀ on @ 1040 ♂ singing AROUND BANK TOWARDS NEST
6/30	2 unhatched J. eggs. 1 looks undeveloped, the other dark - had some funny white spots.
7/1	2 UNMATCHED EGGS
7/2	♀ on - DID NOT CHECK TO SEE WHETHER MATCHED
7/3	one egg → seems developed unless held up to flash light - someone should double check. ♀ on 7:15 am
7/5	COMMON LAST EGG (NOT FOOTING) NEST DESTROYED ! 6

JUNCO NEST LOG SHEET

Nest I.D. WV5170-R
 Female:

Treatment Group _____
 Date Found 5/26/29

Band 2031-33434

Status when found Complete, empty

Colors Wht/Red O S-L, 2 Olg/Lt Grns-R
 Male.

Band # 2011-22299

Colors Lt Blu/DK Blu O S-O Bk-R, Lt Blu/^{DK BLU}Blk-L

Loc. On Bank, high, above Florida (Hotel)

Eggs laid 4 # Hatched, Date exp 5/11 6/11 ?

Date Incub. Onset 5/30 # Fledged/Fail, Date _____

Male Bled (Y/N), Date _____ Implant Removed (Y/N), Date _____

Female Stayed/left _____

DATE STATUS

- 5/27 J. egg 1 today.
- 5/28 J. egg 2 - switched - them for XJ & X CB. ♀ was on - eggs were warm(?)
- 5/29 J. egg 3 - switched for X CB egg ♀ ff
- 5/30 J. egg 4 - switched for her old egg. ♀ on.
- 5/31 ♂ & nest watch, ♀ still on 4, eggs
- 6/1 ♀ INCUBATING; → SEEN SINGING ABOVE NEST + ACROSS ROAD IN MEADOW
- 6/6 ♀ on @ 830
- 6/7 oh boy - only a CB egg in nest, warm, and 1 cold J. egg on bank below nest. Took CB egg out - put J. egg back.
- 6/8 ~~the eggs are~~ FAILED @ 830

JUNCO NEST LOG SHEET

Nest I.D. WVS170
 Female:

Treatment Group _____
 Date Found 4/25/89

Band 2031-32784

Status when found MOSS

Colors Wht/Red O S-L, 2 oig/Lt Gns-R

Male.
 Band # 2011-22299

Colors Lt Blu/DK Blu O S O BLK-R, Lt Blu/DK Blu-L

Loc. WVS-end-near Hotel (~Tag 67) at Pedestrian sign, in bank

Eggs laid 4 (1 taken by CB) # Hatched, Date exp 5/17

Date Incub. Onset 5/5 # Fledged/Fail, Date _____

Male Bled (Y/N), Date _____ Implant Removed (Y/N), Date _____

Female Stayed/left _____

DATE STATUS

- 4/25 Saw ♀ there 2 days ago - today a good moss foundation w/ some grass.
- 4/28 nest complete but empty, saw ♀ there alone while ♂ foraging about
- 4/29 at WVS tag 63, strange ^{no egg, nest in leaf}
- 4/30 still empty. ♂ put in box in AM (1030) was empty then too
- 5/1 1CB egg, with A.M.
- 5/2 2CB, 1J as 1000, VN removed! CB, did not mark J egg
- 5/3 1J 2CB ∴ one new egg since 5/3 and one fewer J eggs than expected, bled for ♂ and for ♀.
- 5/4 2J, 2CB, ∴ ♀ laid egg in A.M. ♂ cut bled her, odd, silent
- 5/6 ♀ on 3 J, 2 CB eggs
- 5/7 ♀ off- eggs cold - snowed.
- 5/10 ♀ off- eggs cold - ♂ seen foraging on hill behind Richmond w/ ~3 other Junco - see Hotel 19.
- 5/11 Same - ♀ off- eggs cold.
- 5/13 Same - found 2 places in bank w/ new moss.
- 5/15 Took eggs - lots of moss in the old start, but not sure.
- 5/17 Same... ♂ Chipped w me at Stream area - Tag 59.1
- 5/23 Saw ♀ on lawn near Virginia. flew to IN trail - up to rd - couldn't find nest!
- 5/26 NEW NEST BEHIND FLOIDA HILF IN BANK (steep) up 9'. LITTLE MARKED W HAWTHORN TREE. DOWN HALL. ♀ CHIRP ALLO -
- 5/27 See WVS170-R

201

JUNCO NEST LOG SHEET

Nest I.D. WV31R
 Female: _____

Treatment Group Non-impl.
 Date Found 6/17/89

✓ Band 2011-22260

Status when found ♀ incubating

Colors S o All o Red/Org-L, Red/Org-R

Male.
 Band # 990-06655

Colors Red o Lt Gin o S-R, Yel-L

✓ Loc. WVS Tag 28.5, below Rd, ~20m, in hemlock ~20'± up

Eggs laid _____ # Hatched, Date ~6/20?

Date Incub. Onset ~6/8? # Fledged/Fail, Date _____

Male Bled (Y/N), Date _____ Implant Removed (Y/N), Date _____

Female Stayed/left _____

DATE | STATUS

- 6/17 Found nest - ♀ on, ♂ chipped from woods.
- 6/24 Checked nest w/out mirror - very quiet...?
- 6/25 Someone flushed up from bank near hemlock tree - 2x since yesterday.
- 6/26 u u
- 6/29 ♂ FLUSHED FROM BANK ON HORSEBARN SIDE, CHIPPING - FORAGED ON ~~NEST-SIDE~~ ^{NEST-SIDE} LEAVING WHAT HE FOUND, VERY PURRY + TWITTERING; ♀ CHIPPING NEARBY, ACROSS FROM HORSEBARN ENTR. + SAME SIDE → FLEDGLINGS??
- ~~7/1~~ Looked in nest w/ mirror - empty - never saw them again.
- 7/5 saw ♂ (bands seen) with ♀ (UI) at bait pie opposite entrance to horse barn, ♂ spread tail, obviously interested in ♀

JUNCO NEST LOG SHEET

Nest I.D. WVS171 Treatment Group Non-Impl
 Female: Date Found 4/22/89 → 5/17/89
 Band 2011-22260 Status when found mass ♀ on 4 developed eggs
 Colors S o Blk o Rd/orq - R, Rd/orq - R
 Male:
 Band # 990-06655
 Colors Red o Lt Grn o S-R, Yel-L
 Loc. WVS ~ Tag 25 (WVS Tag 31), on power in p.c. cut side, in grass clump
 # Eggs laid 4 # Hatched, Date ~5/23 (5/24) 3/4 hatched (4 on 5/24)
 Date Incub. Onset ~5/10 # Fledged/Fail, Date _____
 Male Bled (Y/N), Date _____ Implant Removed (Y/N), Date _____
 Female Stayed/left _____

DATE	STATUS
4/22	Found moss-lined cup - very low in bank.
4/25	Hmm - no change really.
4/28	Found a new start ~ 40m down the rd from the old one.
4/30	Looks good - some grass, zig. spots, & building
5/1	looks similar to 4/30
5/3	no change, no lining, light leaf
5/4	" " , red still there, kopat
5/6	" " , but birds are around.
5/10	No change.
5/11	" "
5/13	" " Must be nesting elsewhere.
5/15	saw pair together at bait pile at nest site, ♂ definitely subordinate to ♀ when feeding together at bait pile, she displaced him, he stayed back
5/17	Found Real nest! ♀ on. ♂ sang near it, & then chipped w me.
5/18	♀ on 4 eggs.
5/19	" "
5/20	" " , 4 eggs
5/21	Did post-mortem on watch, still 4 eggs.
5/22	not checked
5/23	3/4 are hatched - I think yesterday.
5/24	4 young hatched!! hatched 5/23 then
5/26	weighed them.
5/30	Failed nest empty.
5/31	Pair chipped @ driveway entrance to horsebarn/WVS.
6/2	♂ chipped w me at stream/tree - later (1200) he courted a ♀ → S o rd/orq o Blk - R, Rd/orq - L backwards This is WVS178!

JUNCO NEST LOG SHEET

Nest I.D. WNS12-R?
 Female: _____

Treatment Group _____
 Date Found 7/13

Band _____

Status when found _____

Colors _____

Male _____

Band # _____

Colors _____

Loc. _____

Eggs laid _____ # Hatched, Date _____

Date Incub. Onset _____ # Fledged/Fail, Date _____

Male Bled (Y/N), Date _____ Implant Removed (Y/N), Date _____

Female Stayed/left _____

DATE STATUS

7/4 ♀ FLUSHED OFF ROAD. DAN STOPPED & LOOKED. DID NOT SEE
 ANYTHING. SHE WAS LAZAR AFTER SETTING EGGS ON WP
 WAS STOPPED + WAITED + SAW ♀ BRING GRASS TO ANEST
 LOOKS LIKE SHE IS REWORKING AN ANEST

7/15 NOBR HAIL

7/16 HOLE INSULTIM - PROBABLY abandoned

JUNCO NEST LOG SHEET

Nest I.D. WV5172-R3
 Female: _____

Treatment Group E IMPL
 Date Found 6/12/89

✓ Band 2011-22

Status when found Almost complete - some hair.

Colors S-L, 2 Org/Blks-R

Male.

✓ Band # 1700-71631

Colors S O Lt Blu O Red-R, Lt Blu-L

Loc. WVS Tag 39 - uphill bank.

Eggs laid Clutch not finished # Hatched, Date 7/2 - Failed

Date Incub. Onset _____ # Fledged/Fail, Date _____

Male Bled (Y/N), Date _____ Implant Removed (Y/N), Date _____

Female Stayed/left _____

DATE	STATUS
6/12	Found nest - ♂ sing nearby.
6/13	More hair.
6/14	Hmm - not much hair, really.
6/15	Looks finished.
6/17	" " NOEBS, LICIA P. - GOOD WIFE
6/18	720 - L-A - STILL THERE
6/19	- oh boy leaf in - No goz
6/21	Looked all over for nest. Nope.
6/24	♂ (same bands) sings from parking lot / WP Pond drain bank border. No nest found.
6/25	LOOKED FOR THE + UP + DOWN POND CUT + BANK. ♂ STILL SING.
6/27	BUILDING PROBABLY OLD NEST. ARE I GUESS TODAY!
6/28	(UPHILL BANK) TAG _____ WCHANGES IN STAIRS FROM YESTERDAY
6/30	Still 2 S. eggs - 1 undeveloped - 1 dark.
7/2	Ug!! Nest empty - a bit dug in middle - FAILED
7/17	♂ recays vn, Tag 37, removed implant, E
7/25	saw ♀ (bands seen) with a UI ♂. They were downhill in pond drain. She was limping. She also was preening constantly. Is she infected or is she ready to molt?

JUNCO NEST LOG SHEET

Nest I.D. WVS 172-R2
 Female: _____

Treatment Group IMP (E)
 Date Found 6/3/89

Band 2011-22885

Status when found NEST START

Colors S-L, 2 Org/Blks-R
 Male. _____

Band # 1700-71631

Colors S O Lt Blu O Red-R, Lt Blu-L
 (2 FLAGS - ~~MAP~~ ONE CLOSER TO HOTEL)

Loc. WVS TAG 36, ACROSS FROM TELEPHONE POLE & TOWARD HOTEL, IN BANK

Eggs laid _____ # Hatched, Date _____

Date Incub. Onset _____ # Fledged/Fail, Date _____

Male Bled (Y/N), Date _____ Implant Removed (Y/N), Date _____

Female Stayed/left _____

DATE STATUS

- 6/3 POSSIBLE NEST START. ♀ FLUSHED, CHIPPED FROM ACROSS RD., ♂ JOINED HER
- 6/4 Has hair!! Looks great!
- 6/6 Empty.
- 6/8 1 egg
- 6/9 STILL ONE EGG
- 6/10 Failed!

(also one egg bumped in 1st nest!)

172-R

JUNCO NEST LOG SHEET

Nest I.D. WVS172
Female:

Treatment Group Imp E
Date Found 4/22/89

Band 2011-22593

Status when found Mass → 4594

Colors S-L, 3 Org/Blks-R

Male:

Band # 1700-71631

Colors S Lt. blu O Red-R, Lt Blv-B

Loc. WVS Tag 35, in bank

WVS TAG 36 NORMAL POLE INCLUMP OF GRASS



Eggs laid _____

Hatched, Date _____

Date Incub. Onset _____

Fledged/Fail, Date _____

Male Bled (Y/N), Date _____

Implant Removed (Y/N), Date _____

Female Stayed/left _____

DATE STATUS

- 4/22 Found moss start. Birds around here alot.
- 4/24 Looks about the same...
- 4/28 a few pieces of grass. Maybe a new start on downhill side.
- 4/30 Has more grass - still not alot.
- 5/2 Defunct - Same, it has Dead leaves.
- 5/10 Saw pr. Together - flew across Rd from WP, foraged above bank.
- 5/15 Grass in old mossy start!
- 5/16 pr there.
- 5/17 Grass today.
- 5/19 Grass...?
- 5/20 Hmm - not finished.
- 5/21 " "
- 5/22 FOUND NEST WITH 4 EGGs, ♀ FLASHED (ONLY 2 ORG/BLKS) ^{REAL (ACTIVE)}
- 5/23 ♀ on egg pretty fresh.
- 5/26 STARTED INCUBATION W/WHY → SINGING ALOT. ♀ FORAGING W/WHY - FLOW DOWN ROAD. CHECKED NEST CONTENTS GONE. PAIR STILL TOGETHER IN PARACUT. ♀ STILL IN AREA FORAGING → NOT SING.
- 5/28
- 5/29 NEW NEST FOUND JUST ABOVE TAG 37 (20') UNDER GRASS WITH DEER HAIR. 1 J. egg. all OK. No luck trapping.
- 6/1 ♀ on @ 700
- 6/2 ♀ on @
- 6/3 NEST FAILED → SINGING - COULD NOT SEE ♀

R

JUNCO NEST LOG SHEET

Nest I.D. WV5173-R3
 Female: _____

Treatment Group E IMPL
 Date Found 6/22/89

Band 2011-22856

Status when found Grass stage

Colors 50 DK Blu O Org-L, Org-R

Male.
 Band # 1750-64111

Colors 50 Yel-L, 2 Wht/Lars-L

Loc. WVS Tag 49.5, in Rock Face

Eggs laid _____ # Hatched, Date 6/8 (??)

Date Incub. Onset 6/27(?) # Fledged/Fail, Date _____

Male Bled (Y/N), Date _____ Implant Removed (Y/N), Date _____

Female Stayed/left _____

DATE STATUS

6/22 Found Grass stage nest - a few days ago it was moss.

6/23 some hair.

6/24 saw ♀ perching along road @ 73U

6/25 J-egg 1!

6/27 3 eggs - (J?)

6/28 Empty - failed!

7/20 ♀ seen forage @ TAG 48. HAS LAME RIGHT LEG.

7/29 CT ♂ IN NET - VERY LG CLO PRO, DID NOT FIND ANY IMPLANTS

Skipped

JUNCO NEST LOG SHEET

Nest I.D. WVS173
Female:

Treatment Group I-E
Date Found 4/22/89/5/13

Band 2011-27856

Status when found ♀ building - moss ^{Grass stage}

Colors S o rk Blv O Orq-L, Orq-R

Male.
Band # 1350-6411

Colors S o yel-L, 2 wht/Lavs-R

Loc. WVS Tag 46.50

Eggs laid ? # Hatched, Date ~6/16

Date Incub. Onset 5/21 ^{5/22 also counted as day 0 for summary.} # Fledged/Fail, Date 5/27/89 Failed contents gone

Male Bled (Y/N), Date _____ Implant Removed (Y/N), Date _____

Female Stayed/left _____

DATE STATUS

4/22 Saw ♀ building ~ 1930 - 2 male squalle nearby.

4/25 OK - real nest now moss stage, w/a few grass strands begun - on downhill bank, tag 46.

4/28 Nest has a clump of fine grass, but it is not well-placed.

4/30 Has a bit more grass - but slow!

5/2 Hmm - now a little more moss " stuck on top of old stuff.

5/4 saw ♀ of this pair feeding on uphill bank, attended by a ♂ whose bank we not seen, when she flew (toward backhouse) no ♂ followed. she did not feed as if incubating. This AM there is a CB egg in her still active nest. I removed it.

5/6 - not visited

5/7 Same as before

5/10 " "

5/11

R - 5/13 Found the real nest!! Further south, uphill bank - Just needs deer hair.

5/15 all done! Lots of deer hair!

5/16 Empty.

5/17 CB egg only - marked it.

5/18 2 new, unmarked CB eggs - 2 ♀♀.

5/19 ♀ on - 2-910 - Has new J egg - did not change egg. Was on w 930, but off at ~ 1030

? 5/20 Egg warm - Gave her 1 egg back - she has a new J. egg - Took out other 2 CB

5/21 Egg warm - Gave her 1 egg back - she has a new J. egg - Took out other 2 CB eggs. Now 3 J. eggs.

apparently stopped 5/22 incubation watch 2 J eggs. ♂ sang ♀ incubated (bands ♂ not seen)

5/23 ♀ on - a.m. - OK @ 1600.

5/25 ♀ on - 4 eggs.

5/26 ♀ on @ 705

5/27 contents gone / NEST FAILED 5/29

NEST FOUND ALL THE EGGS WERE 75% PASSED 48

day 0
Binc.

WVS173-R2

JUNCO NEST LOG SHEET (CON'T)

DATE	STATUS
6/1	one J egg @ 650!
6/2	2 J eggs
6/3	3 J eggs @ 820 ♀ on @ 1130
6/4	♀ on
6/5	4 J eggs @ 700
6/6	Empty - Failed. P.M. ♀ seen in stone "Rockface".
6/12	Found 2 starts in Rock outcropping - 1 moss, 1 grass.
6/22	Found new nest!

JUNCO NEST LOG SHEET

Nest I.D. WVS 174- RD
 Female:

Treatment Group J impl
 Date Found 6/10/89

Band 2011-22039

Status when found BUILDING - DEER HAIR

Colors S O ORG O LT BLU/RED-L, LT BLU/RED-R

Male:

Band # 2011-22039

Colors DK GRN O S O ORG-L, LT BLU/BLU-R

Loc. WVS TAU 53, LOW IN UPHILL BANK

Eggs laid 5 # Hatched, Date 6/26

Date Incub. Onset 6/14 # Fledged/Fail, Date _____

Male Bled (Y/N), Date _____ Implant Removed (Y/N), Date 8/1

Female Stayed/left _____

DATE STATUS

- 6/10 ♀ SEEN CARRYING DEER HAIR, CHIPPED @ ME
- 6/11 ONE EGG
- 6/12 J-egg. 2 today.
- 6/13 J-egg 3.
- 6/14 ♀ on 0700 (zig) # egg?, ♀ not followed
- 6/15 " " 5 egg
- 6/17 NEST FAILED !! → ♀ & ♂ → 5/11/1989
- 6/25 ♂ singing here - couldn't see who.
- 6/28 ♂ singing up behind G.D. Rd
- 7/2 → TWITTERING UP ON GD RD, NO ♀ SEEN
- 7/8 THOUGHT I SAW THIS ♂ @ WVS 176 NEST DURING A NESTWATCH 10-1100;
 NEEDS VERIFICATION ✓ VERIFIED BY ZIG, 7/9
- 8/1 ♂ WVS 174 59, removed implants, 2 long, both present, took blood
 sample + weigh 20.0g

JUNCO NEST LOG SHEET

Nest I.D. WV5174-R Treatment Group T impl
 Female: Date Found 5/19/89
 Band 2011-22261 Status when found Complete, empty
 Colors S O Blk O Lt Blu/Red-L, Lt Blu/Red-R
 Male:
 Band # 2011-22039
 Colors DK Grn O S O Org-L, Lt Blu/Blk-R
 Loc. WVS Tag 54, in uphill bank, ~ 10 m North of old nest
 # Eggs laid 4 # Hatched, Date ~^{exp} 6/6
 Date Incub. Onset 5/25 # Fledged/Fail, Date _____
 Male Bled (Y/N), Date _____ Implant Removed (Y/N), Date _____
 Female Stayed/left _____

DATE STATUS

5/19 Found nest - empty; complete.
 5/20 Still empty.
 5/21 " "
 5/23 Forgot to check yesterday - 2 S. eggs today - changed them. 1 for XS, 1 XCB egg.
 5/24 Egg 3 today - changed it for XCB egg.
 5/25 Egg 4 - put hu eggs (3) back - No robberies.
 5/26 ♀ an.
 5/27 ♀ an.
 6/1 " "
 6/4 " "
 6/6 ♀ in nest @ 7am, caught @ MNPAN OTHM ONP... (2-labelled H2O)
 6/6 nest failed acc. to 218 - ♂ seen courtly, around bend toward Boathouse.
 6/8 seen twice TAG 51-54
 6/10 MIKE ROUNO - ALMOST GOOD JOB!
 6/11 ONE JOB

JUNCO NEST LOG SHEET

Nest I.D. WVS174 Treatment Group CC → *implanted on 9/5/89*
 Female: _____ Date Found 4/24/89
 Band 2011-22261 Status when found Cup, moss, outline, no lining
 Colors SO BLK OUTSIDE/RED-L LTB/RED-R
 Male: _____
 Band # 2011-22039
 Colors dk grn OS OEG - L LTB/BLK - R
 Loc. WVS ~ tag 54 ^{uphill} downhill bank, just S of GDR, N of net site
 # Eggs laid 4 # Hatched, Date ~5/17 5/9-10 - deserted
 Date Incub. Onset ~5/5 # Fledged/Fail, Date _____
 Male Bled (Y/N), Date _____ Implant Removed (Y/N), Date _____
 Female Stayed/left _____

DATE STATUS

4/24/89 under construction - moss. this is used on downhill side of bank
 4/25-26 no further action on this nest in several checks, moving of leaves, etc.
 4/27 saw ♀ building in A.M., uphill bank slightly closer to GDR entrance
 4/28 VN reports: nest complete
 4/29 empty, ditto
 5/1 Has 1 CB egg, ditto for A.M.
 5/2 1 CB only at 1000
 5/3 1 J, 2 CB, 12⁺ known J egg, bled ♂ and ♀, forgot to implant the ♂
 5/4 2 CB, 2 J, silent - Took out 1 CB egg.
 5/5 implanted red ♂, ^{saw} ♀ she went like in incubating ♀
 5/6 ♂ cl and bleeding do pers. no implants
 5/6 ♀ on 4 J, 1 CB egg
 5/7 ♀ seems gone - eggs pretty cold
 5/8 ♀ off - eggs pretty cold.
 5/10 ♀ off eggs cold
 5/11 " "
 5/13 " " Deserted for sure.
 5/15 I think she's building in the old start, downhill bank
 5/19 Lw (f) nest now empty See WVS174 - "R"
 5/20

JUNCO NEST LOG SHEET

Nest I.D. WVS 175-IFR Treatment Group T IMPL
 Female: Date Found 6/27

✓ Band 1750-64139 Status when found _____

Colors Org O S-L 2 lt grn/red - R

✓ Male.
 Band # 2011 22306

Colors White/red O S-B Org O dk blue O Org -L

Loc. ON MAIL FROM IT/MUSEASW INTERSECTION at BOATHOUSE N 80 STEPS ON LEFT IN RHODE ISLAND
40 N 4.5 FOOT
(COVER)

Eggs laid _____ # Hatched, Date 7/13

Date Incub. Onset _____ # Fledged/Fail, Date _____

Male Bled (Y/N), Date _____ Implant Removed (Y/N), Date 4.7.17

Female Stayed/left _____

DATE	STATUS
6/27	ADDED FULLY LINED.
6/28	♀ on @ 7:00 AM.
6/29	@ 10:40 2 EGGS
7/2	♀ on - did not flush to count eggs.
7/3	3 EGGS ♀ FLUSHED 6:30
7/5	EGGS GONE - NEST FAILED !!
7/10	Saw male forage at bait pile S. of boathouse.
7/17	DPC of ♂, only small T implants remained, removed
7-18	cf ♀ at WP tagl - she flew away like her wing was sprained
7/22	Saw ♂ around Gate 1, sang & foraged
7/26	Saw ♀ FORAGING AROUND A NET @ WP ENTR
7-27	cf pair at WP entrance. ♂ had a flesh scab on his right wing - ♀ still not flying well.

JUNCO NEST LOG SHEET

Nest I.D. WVS175-II Treatment Group T Impl
 Female: Date Found 6/4/89
 Band 1750-6439 Status when found MASS - Good foundation
 Colors Org O S-L, 2 Lt Grn/Red-R
 Male: Band # 2001-22306
 Colors White/Red O S-R, Org O DK Blu O Org-C
 Loc. WP Rd, entrance, bank before 1st gate.
 # Eggs laid 4 # Hatched, Date 6/21
 Date Incub. Onset 6/9 # Fledged/Fail, Date _____
 Male Bled (Y/N), Date _____ Implant Removed (Y/N), Date _____
 Female Stayed/left _____

DATE	STATUS
6/4	Found nest ♀ in area.
6/5	Grass today
6/6	Watched fledgling - ♂ only fed. Hair in nest.
6/7	one ♂ egg → BLED
6/8	2 ♂ eggs @ 80 Dtd fledgling watch → should be on WVS 175 I not II incubation watch (in the fog).
6/9	3 eggs + incubating
6/9	♀ on @ 430, one fledgling
6/10	30744 ♀ ch. near NBALBY 630
6/11	4 J EGGS, WARM, NO SIGN OF PARENTS
6/12	♀ on 4 junco eggs
6/14	♀ on 0700
6/15	010 90 min incubation watch
6/16	♀ on
6/17	Nest watched - ♀ spent 60 min nonstop incubating, ♂ nowhere to be found!
6/18	♀ on @ 720
6/21	4 eggs by 1100 - but at least 1 is pipped. Set net.
6/22	Failed. Nest empty.
6/23	♀ seen on gravel lot & ♂ singing on wire above ^{south} flow across River
6/24	looked around 700-730 & 130-230 NO SIGN
6/26	♂ singing on wire over parking lot at noon.
6/27	Fig probably found nest.
6/28	♀ was on early a.m.

JUNCO NEST LOG SHEET

Nest I.D. WVS175

Treatment Group I-T

Female:

Date Found 4/20/89

Band 2750-69139

Status when found Moss

Colors Org 0 5-L, 2 Lt Grn/Reds - R

Male:

Band # 2011-22306

Colors Wh/Red 0 5-R, Org 0 Dk Bl 0 Org - L

Loc. WVS - Boathouse, on Big bank across the Rd.

Eggs laid ? 2 J., 2 CB eggs (sum?) # Hatched, Date 5/13

Date Incub. Onset 4/29 (3 eggs) # Fledged/Fail, Date 5/24

Male Bled (Y/N), Date _____ Implant Removed (Y/N), Date _____

Female Stayed/left _____

DATE STATUS

4/26 Egg 1 today. Nest found in 1st stages on 4/20, EK marked egg 1

4/28 - Hum only 1 J. egg (no check for marks)

4/29 ♀ on - 3 eggs - re too, at least 1 CB

4/30 Did incubator watch - 1 J., 2 CB eggs - are you sure? at 1000 at saw 4/29
 (I took one out) egg was marked

5/2 ♀ on - ♂ sing softly nearby ~ 1720

5/3 Did incubation watch - Then I took 1 CB egg out - final clutch size = 1 CB, 2 J. eggs.

5/5 ♀ on

5/6 Hum - only 2 J. & 1 CB egg. eggs ICE COLD (very bad weather today - stormy & snowed) - I see J.'s around. ♀ chips w me from bank ~ 30m South of nest area.

5/7 Same as yesterday

5/8 " "

5/10 " "

5/11 ♀ was on!

5/12 ♀ on 2:00 → 5:05 nearby ♂ J's w/ her.

5/13 2 hatchlings, 1 egg. Did nest watch (1 CB hatched) → Took out CB. J-egg still unhatched w ~ 1830.

5/14 1 junco baby, 1 egg. Did nest watch.

5/15 1 junco baby, 1 dud egg. Did nest watch.

5/16 1 junco, nest watch

5/17 2 J's watched

5/18 ct. ♂, lg. implant coming out, reimplanted on other side.

5/21 all OK - watched.

WRS175 (2)

JUNCO NEST LOG SHEET (CON'T)

DATE	STATUS
5/22	but the ♂, at the ♀ but she got away! small implant ok, large implant a little grey looking, dry skin, fluid filled pocket
5/21	23 - 1 Nestling - ♀ fed in nestwatch
5/23	" ♀ fed 9 times - ♂ was in area - did not feed.
5/24	SET NOT @ 7:11 - ct & Bled ♀ - (wt = 20.5) - weighed kid & took feathers put it back in nest, but it was out by late afternoon. in late PM saw ♂ + ♀ at 1st gate they chirped so conclude that young is still alive - ♀ has a funny chirp, she sounds like a chipmunk.
5/25	7:30 pm. looked for fledgling + female behind nest, to late, accross wop to stream. Only saw ♀ by stream (15:30) + she was not very agitated, fledgling nowhere in site
5/27	0700 - saw ♀, she showed alarm, saw young, it flew ~20 m., no sign of ♂ no response by him to either a song type or a fledgling scream type.
5/28	1100 - SAW ♀ WITH FOOD IN MOUTH, SAW ♂ FIRST CHIRPING CHASED UP BTBW ♂. LATER SINGING DID NOT SEE fledgling.
5/30	FLEDGLING WATCH ATTEMPTED; NO SOUND OR SIGHT OF PARENTS OR FLEDGLING
5/31	PARENTS SEEN ON TRAIL CONNECTING IT W/ HORSEBARN NEAR BATHHOUSE; BOTH CHIRPED & HAD FOOD IN MOUTH, ♂ SANG, FLEDGLING FEEDING POSSIBLY HEARD
6/1	CHECKED BACK - NOTHING SEEN @ PLACE NOTED ABOVE
6/4	Saw Fledgling w/ ♀, was chirped - ♂ there, too, but didn't see hands. Found her 2nd nest - MOSS -
6/7	1 J egg
6/8	2 J eggs, Did fledgling watch, young fed self. ♀ fed, ♂ didn't, both showed alarm
6/9	35 eggs ♀ incubating, ♂ feeds young, ♀ does not, EK/VN did fledgling watch

JUNCO NEST LOG SHEET

Nest I.D. WVS 176-RJ
 Female: _____

Treatment Group I impl - but I goal
 Date Found 6/23/89

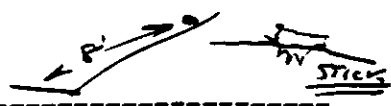
Band 2011 ~~2248~~

Status when found 4 eggs

Colors SORE WHITE @ BLK/FRANK @

Male Band # 2011-22483

Colors SO WHITE @ BLK/RED @ BLK/RED @



Loc. 8 STOPS SOUTH OF 774 ST; UP HILL BANK ABOUT 8' UNDER LEAF SMALL FLIGHT ON 7/24, VERY CLOSE

Eggs laid 4 # Hatched, Date 7/1

Date Incub. Onset ~6/24 # Fledged/Fail, Date _____

Male Bled (Y/N), Date _____ Implant Removed (Y/N), Date _____

Female Stayed/left _____

DATE	STATUS
6/22	BIRD PUSHED OFF BANK IN MID AFTERNOON. LO OKED ALLOT DURING FIND
6/24	LO OKED @ 730 ^{WORK} NIGHT LO OKED @ 1020 FOUND NEST FOR WVS <u>WVS</u> TO SCRAPY TO CATCH. WAY TO GO!! I'VE BEEN LOOKING FOR THIS NEST FOR DAYS - SAW BIRD FLUSH OFF BANK 6/17 + A COUPLE OF DAYS LATER
6/25	♀ on @ 715
6/26	♀ CT + BLED ~1100; 216 REMOVED CB EGGS (3)
6/27	INCUBATION WATCH, ♀ ON 3 J EGGS
6/28	OK. Got chipped w- ♀ flushed off.
6/29	3 WMM EGGS @ 120
7/2	3 J EGGS
7/3	SWW 3 EGGS OK → very much O.K + developed. SAR @ 8:15 am.
7/5	EGGS WARM @ 1030 ♀ CHIPPING WAY UP HILL
7/6	2 Young hatched - Tried to catch pair - no luck
7/7	but ♂, ♀, 3 rd young hatched ♂ has lost large implant, small one looks as if it is emptied of hormone, 1 parent ♂ a little bit WOZZY RETURNS but saw ♂
7/8	NESTWATCH, 3 YOUNG, ♀ FED, ♂ ABSENT ALMOST ENTIRE WATCH; WHEN HE WAS THERE I GOT ONLY A GLIMSE AT HIS BANDS, WHICH LOOKED LIKE DR GRN 0 5 0 DRG-L = THE WVS 174 ♂ ... WHAT'S UP? NEEDS VERIFICATION
7/9	WVS 174 ♂ IS DEFINITELY THE REPAIRMENT ♂ GOT 30 MINUTES OF INTERSEX BEFORE I STOPS
7/10	failed as of 1530, empty, ruffled bottom on nest, no adults

DAY 0
21

* Underway

JUNCO NEST LOG SHEET

Nest I.D. WV 5176-R
Female:

Treatment Group _____
Date Found 5/20/89

Band 2011-22386

Status when found Moss-Grass stage

Colors S O Red O white-L, Blk/HT Pnk-R

Male:
Band # 2011-22483

Colors S O white O Blk/Red-R, Blk/Red-L

Loc. Tag 57, downhill bank

Eggs laid 4 # Hatched, Date exp 6/10

Date Incub. Onset 5/29 # Fledged/Fail, Date _____

Male Bled (Y/N), Date _____ Implant Removed (Y/N), Date _____

Female Stayed/left _____

DATE	STATUS
5/22	Nest looks good - fine grass & red stuff today.
5/23	Complete.
5/24	Empty.
5/25	" "
5/26	J. egg 1 - changed it for X J. egg.
5/27	J. egg 2 - " " X CB egg.
5/28	J. egg 2 Did not go to nest - ♀ (I think ♀) was near nest.
5/29	Returned her 2 CB eggs. Val saw a ♀ CB get an egg from, presumably, her nest, & eat it. Nest in am (♂ on) had: 1 X CB egg, 1 new CB egg, 1 new J. egg. Now she has 3 J. S → CB ¹¹⁰⁰ took 1x + 1 new J. egg.
5/30	♀ on. No luck catching.
6/13	TA 100 " "
6/14	" "
6/15	micro for → 2 1/2 hours. MAF not seen → in 4 days
6/16	♀ on.
6/18	♀ in area Chipping @ 600
6/19	♀ in nest chipping @ 430, OK
6/19	3 eggs still @ 630 ♀ chipping Down Hill, attempted bleeding never caught her
6/11	♀ on, ^{all 3} eggs are underdeveloped!, will not hatch
6/12	Got chipped at here, EK checked esp norm at 1415, ♀ mt on
6/13	♀ on when Zig checked 0700
6/14-6/15	♀ on ²⁻³ times when awake
6/16	♀ on, 3 eggs warm at 1045
6/18	Looks like she finally quit - 0745 call & note @ 710
6/19	♂ SINGING AT TAG 56.5 AT 230.

later: VNSaw this at a tag; not for 5/10; probably a tanked egg

6/23 ISWORN NOT NOT SINGING AS 8-10 YRS PASSED TTY 5/6

JUNCO NEST LOG SHEET

Nest I.D. WVS 176 Treatment Group _____
 Female: _____ Date Found 4/28

Band 201-22384 (Y) GC tag 0 4/28/88 Status when found partially built

Colors Silver 0 white - L blk/ht pink - R

Male: _____
 Band # 201-22483

Colors Silver 0 white 0 blk/red - R blk/red - L

Loc. WVS Tag 58

Eggs laid 23? # Hatched, Date _____

Date Incub. Onset _____ # Fledged/Fail, Date _____

Male Bled (Y/N), Date _____ Implant Removed (Y/N), Date _____

Female Stayed/left _____

DATE	STATUS
4/28	nest in uphill bank, under construction, some grass lining, looks good + ♀ chirped
4/29	still looks a little, I left leaf
4/30	Very nice! all grass now. in AM it still looked a lining etc put in leaf (1-15)
5/1	empty, leaf gone, put in another leaf, had a little more lining
5/2	not much change, leaf gone, put in new one, still active
5/3	no A, leaf still there, deserted?
5/4	1 CB egg, 1 J egg, cold - LW exchanged the 1 J. egg for an XCB egg.
5/5	new J egg (actually 2 CB, 1 J, believe LW put in one of the CBs), bled ♂ + ♀, large implant coming out on ♂ I reimplanted
5/5	♂ d. at WVS 58 med. 20 drops.
5/6	2 CB, 1 J. egg
5/7	1 J, 2 CB eggs still - cold (Snowed + cold) Did not replace her egg this am
5/8	Same as 5/7 - replaced her J-egg for 1 CB egg - now 2 J., 1 CB egg.
5/10	♀ off - eggs cold
5/11	" " Took them - only 1 CB + 1 J. egg.
5/15	No luck in new nest. pr. around.
5/17	Saw her dabbling around bank, near old nest - a ♂ sang
5/19-20	Saw pr. here - 5/19 Got chipped at - 5/20 Flushed 2 birds off bank, very near old nest.
5/20	Think I found start in downhill bank - Grass stage ~ 25 m N. of old nest.

WVS177-R

JUNCO NEST LOG SHEET

✓ Nest I.D. WVS 177 Treatment Group T impl
 Female: 2021-09658 Date Found 4/29/89
 Band ~~2011-22411~~ Status when found Pre-lim-nest
 Colors S O Org o Lt Blu-L, Yel -R
 Male Band # 2011-22411
 Colors OLG(B) SOLBL(L)
 Loc. WVS Tag 23 (S-turn)
 # Eggs laid 4 # Hatched, Date ~5/20^{exp} Failed-5/15
 Date Incub. Onset ~5/9? # Fledged/Fail, Date _____
 Male Bled (Y/N), Date _____ Implant Removed (Y/N), Date _____
 Female Stayed/left _____

DATE	STATUS
4/30	Found nest on 4/28 - Today saw ♀ flush up from it - got her colors. Not sure who ♂ is yet.
5/1	Deer hair, saw p-moment encounter between ♂ 2021-09376 with male (probably) 2021-09659 ♀ and 2011-22411 ♂ with his mate 2021-09658 ♀. Loc would suggest that nest belongs to 2nd pair listed, 2nd pair also had intr w/ 1st pair ♂ at end of cut.
5/4	1 J egg, I marked it blood ♂ + ♀ 2011-22411 and 2021-09658 believe by ♂ with this nest - exchanged J-egg 1 for XCB egg.
5/6	2 CB, 2 J-egg.
5/7	2 + 2 still - Cold - its snowing & cold - possibly no eggs laid this am. Did not replace her egg this am. Later, w/ 1530, then were 3 J-eggs - cold.
5/8	♀ off-egg tepid - Replaced her J-egg w/ the CB egg - now 4 J-eggs.
5/10	♀ on! She's incubating.
5/11	♀ off then on.
5/12	DISINCUBATING WATER INK.
5/13	Not on 3 separate times today. Egg cold w/ 1840.
5/14	NOT ON 6 " TIMES, 6955 WAM @ 100PM, ON 1830.
5/15	♀ on 1645, 4 eggs, at 1800 ♀ on, 2 eggs gone, nest somewhat disturbed (base), 1900 nest empty, lining from out egg 1 had apparently developed (opage), eggs 2, 3, 4 had not begun to develop.
5/25	Failed Failed
7/5	Two pair seen with at least 2 probably more UB fledglings (!) at WVS tag 18 born ♂ + ♀ feed young
7/16	♂ seen w/ 3 UB fledglings, ~ 2/3 Tails. Tag 19; They all went down across power cut & into woods!

JUNCO NEST LOG SHEET (CON'T)

<u>DATE</u>	<u>STATUS</u>
7/29	CT ♀ WVS TAG 17, NET W/ BAIT

JUNCO NEST LOG SHEET

Nest I.D. WVS178
 Female:

Treatment Group E impl
 Date Found 4/30/89

Band 2021-09693

Status when found Completely Empty

Colors PINK O YEL O PINK @ S @

Male:
 Band # 990-06603

Colors S-R, Red O Lav O Red L

Loc. WVS Tag 14, Power cut "bank"

Eggs laid _____ # Hatched, Date 5/6 failed before clutch completion

Date Incub. Onset _____ # Fledged/Fail, Date _____

Male Bled (Y/N), Date _____ Implant Removed (Y/N), Date _____

Female Stayed/left _____

DATE STATUS

- 4/30 Found nest! Empty.
- 5/3 ^{Junco} ONE ♀ AT 800. SAW BIRDS AT BAIT PILE @ 1800
- 5/4 2 CB eggs. Val sees trap at bait pile near nest
- 5/6 3 eggs in nest early (before 900), but by 1200 it failed. Ct & Bled ♂?
- 5/13 Saw pr (head ♂ sing) in Power cut, not too far from old nest.
- 5/17 ♂ sing in Power cut near old nest - couldn't find nest!
- 5/15 saw ♀'s bands, she was with ♂ she twittered as she flew in
 ♂ made courtship noises very high, near old nest site, flew in woods on the side of power cut.
- 5/19 ♂ sing on his usual perch.
- 5/23 Saw pr below Rd, fly to Big hemlock below power cut. Did not find nest.
- 5/25 No luck looking for nest!
- 5/28 looked for 1/2 hr 700-730 no sign of any birds
- 6/2 " " ♂ chirped w me in his usual hangout Tree at Stream. Did not see ♀, but I saw him very courtly w/ a ♀. SO Rd/Bk O Blk-R, Rd/Orng-L.
- 6/12 VN saw this ♂, he sang in response to tape records
- 6/24 ♂ Sing in Power cut - he does this a lot. I think ♀ left.
- 6/30 ♂ & another J. chip here w Broad-winged hawk! Other bird was SO Red O DK Blu??-R, Lt Blu..?-L. It flew into wood afterward - RLR sang.
- 7/5 this ♂ at tag 16 - ID based on song
- 7/12 saw ♂ at bait pile, still sing his odd song, still on terr.

WWS178 cont
red low red

JUNCO NEST LOG SHEET (CON'T)

DATE	STATUS	
7/27	♂ Ch in nest on WWS, implants removed	$\begin{array}{r} 21.8 \\ - 0.2 \\ \hline 21.6 \end{array}$

JUNCO NEST LOG SHEET

Nest I.D. WVS179
 Female: _____

Treatment Group T IMPL
 Date Found 5/17/85

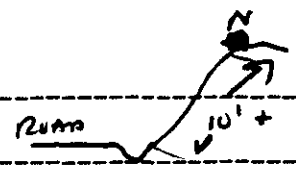
✓ ? Band 2011-20174 Status when found COMPLETE GRASS LINED

Colors LTBL/DKBL (C) S O WHITE (C) RED

✓ Male.
 Band # 2031-330PZ

Colors S O YEL O DK BL (C) WHITE (C)

Loc. ABOUT TAG 45, MARKER ON FACE HIGH IN BUMP



Eggs laid 4 5 # Hatched, Date exp 6/6 or 6/7

Date Incub. Onset 5/25 # Fledged/Fail, Date _____

Male Bled (Y/N), Date _____ Implant Removed (Y/N), Date _____

Female Stayed/left _____

DATE	STATUS
5/17	GRASS LINED, BOTH PARENT SAW ♀ TMC WITH GRASS, OR EGGS.
5/19	Complete, empty
5/20	1545, 1 fresh CB egg
5/21	1 CB egg only. - Unmarked.
5/22	1 J. egg - changed it for X J. egg.
5/23	2nd J. egg - changed it for X CB egg.
5/24	♀ on @ 715 - J. egg 3 - changed it for new CB egg. Took out J. egg. now 2 CB, 1 X J. egg.
5/25	J. egg 4 - egg warm a.m. - put her 3 eggs back. P.M. ♀ not on, egg cold!
5/26	♀ on @ 700
5/27	" @ 1930.
5/28	EGGS WARM @ 1100 5 eggs
6/1	" WARM @ 700, ♂ injected for 2-label H ₂ O, 5/31-6/1
6/4	" "
6/5	" " @ 700
6/7	1 hatched - only 2 eggs in nest. Nestling on rim. Put it back in. Found 330
7/15	CB WPR extant, lost for OR, removed implants, almost all hatched was gone, large 2/3 on, small was in,

JUNCO NEST LOG SHEET

Nest I.D. WVS180
 Female:

Treatment Group E IMPL
 Date Found 5/17/89

Band 2021-09659

Status when found G-foss
~~a little moss~~

Colors S O Lt Blv O Olg-L, Yel/Blk-R

Male:

Band # 2021-09376

Colors S O DK Grn O Yel/Olg-R, Lt Blv/DK Blv-L

Loc. WVS, Tag ~~17.5~~ Tag ^{22.5} uphill, bank near old WVS177 nest which was a ^{tag} ~~23~~

Eggs laid 4 # Hatched, Date ~6/11
 exp.

Date Incub. Onset 5/30 # Fledged/Fail, Date _____

Male Bled (Y/N), Date _____ Implant Removed (Y/N), Date _____

Female Stayed/left

- 5/15 saw pair in woods NE of S-turn of county picks up moss, fem flew w into power cut
 DATE STATUS still N of S-turn, ♀ is not yet incubating
- 5/17 saw pr there 2x, ♀ exploring & going into cavity - moss there
- 5/21 saw this pair at ~ ^{moss} Grass stage nest ~ 5 m. North of WVS177 failed nest
 on bank
- 5/23 Complete.
- 5/24 no egg 710
- 5/25 no egg @ 800, LICIA or ♀ B100 ♀. IM = 24.0
- 5/26 no egg @ 710
- 5/27 J-egg 1 - changed it for XJ-egg.
- 5/28 2 egg 4 @ 705 - Changed hen J- for X CB egg.
- 5/29 J-egg 3 changed for X CB.
- 5/30 J-egg 4 ♀ or J-egg 4 put back hen 3.
- 6/1 ♀ on @ 700
- 6/4 ♀ on, track inc. with it focus on ♂, content for him. 4 EGGS STILL
- 6/5 ♀ on @ 700
- 6/6 Nest stepped on ?? - Zig fixed it up - egg cold. ♀ not returned - saw pair
 around curve. LOOKS LIKE ♀ MIGHT HAD CLW CALL, FEATHERS EVERYWHERE - FAILED
- 6
- 7/17 VN caught ♀ near S-turn (see capture notes) - WVS-tag 21 - 21.7 @
 1200. No neck. Patch.

♀ S O DR gm O Red (L)
red (R)

WVS 181 R

♂ S O Yel OLT Blue (R)
lt gm (L)

Tag 18

JUNCO NEST LOG SHEET (CON'T)

DATE	STATUS
7/2	Dan Found fledgling - Both parent defensive, found way back in woods, East of road, straight in from tag 18.
7/5	EK/IN looked for pair + young, no find
7/7	FOUND FLEDGLING, 1/2 TAIL, ~ TAG 17, EAST SIDE OF RD., BEGGING FAIRLY LOUDLY; WATCHED FOR ~10-15 MINS., PARENTS NOT SEEN, ALTHOUGH I THINK ♂ WAS OCCUPIED IN THE LAB AND WAS NOT BEING INJECTED BEING INJECTED
7/10	looked E side of road from ~ nest to 'S' curve, high + low, no sign of anybody
7/17	FOLLOWED ADULTS FOR ~25 MINS. - NO INDICATION THAT THEY ARE ATTENDING A FLEDGLING; FLEDGLING NOWHERE IN SIGHT, Lt of 2031-33090 WVS tag 17 - removed immed. Big clo pro - No molt., 73.3g

2021 in captures and b/w bleeding sheet

JUNCO NEST LOG SHEET

Nest I.D. WVS 181-R
Female:

Treatment Group T IMPL
Date Found 6/5/89

Band 2031-0918

Status when found ♀ on 4 J. eggs

Colors S O DK GR O Red-L, Red-R

Male.
Band # 2031-33090

WVS on my
→ capture sheets say color =
Yel OS O blk - (R) LF gm (L)

Colors S O Yel O Lt Blv-R, Lt Gr-B

Loc. WVS, Tag (18-19) in uphill bank.

Eggs laid 4 (17-18)

Hatched, Date 6/17, 4 hatched

Date Incub. Onset _____

Fledged/Fail, Date 6/28

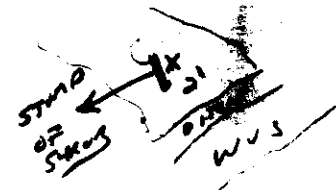
Male Bled (Y/N), Date _____

Implant Removed (Y/N), Date 7/17

Female Stayed/left _____

DATE STATUS

- 6/5 Zig found nest. ♀ on !!
- 6/6 ♀ on. ♂ singing over nest @ 430
- 6/7 4 eggs still
- 6/8 ♀ on nest, caught ♂ for 2-H₂O 30L (USED LURE IN TRAP).
- 6/9 RECAUGHT ♂ 342 (USE LURE & FLUSHED IN NET)
DID INCUBATE UNTIL 430-1015
- 6/12 ♀ on. 4 eggs.
- 6/14 ♀ on - 0700 - 218, 1700. I checked nest. eggs look developed
- 6/15 ♀ on over egg
- 6/16 ♀ off, 14 eggs, chipping.
- 6/17 ♀ caught & also - 3 young 1075
- 6/18 705 4 young
- 6/19 4 young, Nest watch. 2 hours !!
- 6/20 1 nestling only - one found near nest + Frozen
weighed day 3!
- 6/21 1 nestling left - it's OK.
- 6/22 ♀ on.
- 6/23 Did nest watch; STILL ONE NESTLING - Banded S O DK GRN-L, ORG-R -
NESTLING LOOKS GOOD
- 6/25 nest watch, saw both parents
- 6/28 Young had fledged by ~930 - ct it, tried to get parents, but no go.
- 7/11 couldn't find parents or fledg - 1/2 hr



JUNCO NEST LOG SHEET

Nest I.D. WVS 181
 Female:

Treatment Group _____
 Date Found 5/16/89

Band 2031-09130

Status when found MOSS

Colors S O Dk Grn O Red-L, Red-R

Male.
 Band # 2031-33090

Colors so yel o Lt Blu-R, Lt Gra-L

Loc. WVS Tag ~ 16, West side of road, very low in bank, No "sawant hump"

Eggs laid 4 # Hatched, Date exp ~ 6/6

Date Incub. Onset 5/25 # Fledged/Fail, Date _____

Male Bled (Y/N), Date _____ Implant Removed (Y/N), Date _____

Female Stayed/left

5/15 just a tad of moss + a cavity ~~had~~ ♀ chipped, was with ♂, bands seen

DATE STATUS

5/17 ♀ chips - has moss, cavity in small bank

5/18 some grass today.

5/19 ♀ carrying hair, chipped @ 07 ♂ + ♀, hair in nest (Mild Tavel)

5/20 Hair - looks good.

5/21 1 CB egg only, ♀ flew in nest in A.M., now almost look empty to me, LW disagree

5/23 J-egg today, plus a new CB egg - took her egg out.

5/24 ~~SO NOT @ 745~~ - New J. changed it for X CB egg - now 3 CB eggs.

5/25 J-egg 3 - changed for XJ. egg. But ♀ on later in day.

5/26 J-egg 4 - put her 3 eggs back.

5/27 Failed - nest torn out ~ 1900 - ♀ chips abit w me.

6/5 ?

WVS 182-II

~~Willow Wood?~~

JUNCO NEST LOG SHEET (CON'T)

DATE	STATUS
7/25	SAW 2 RED/BLKS + AT LEAST 1 OTHER FLEDGE, POSS. 2, UN-ID; BOTH PARENTS FEEDING, TOUJL VERY EVASIVE
7/30	FLEDGING WATCH, DAY 16 (<u>INDEP</u>) - FOUND 2 RED/BLKS, LAV & ORG (60 MINS.) BOTH PARENTS STILL FEEDING, TOUJL APPROACHING TO BEG, ATTEMPTING TO FORAGE INDEPENDENTLY - UNSUCCESSFULLY
8-3	I couldn't find them after about 1/2 hour in the place around the nest.

JUNCO NEST LOG SHEET

Nest I.D. WVS192-II
 Female: _____

Treatment Group NO IMPL
 Date Found 6/23/29

Band 2011-22037

Status when found ♀ on 4J-eggs

Colors 50 DK Blu/Yel-R, DK Grn/Lt Grn-L

Male: _____
 Band # 2021-09889

Correct? ^{NO} S on left, not right

Colors 2 Lt Grn/DK Grns ~~Q~~ R, Lav O S-L

Loc. ~20 Yds past 1st Power cut, on 700 below HTL, in uphill bank ~4 ft.

Eggs laid 4 # Hatched, Date 7-2

Date Incub. Onset ~6/22 # Fledged/Fail, Date 7-13

Male Bled (Y/N), Date 7/13 Implant Removed (Y/N), Date _____

Female Stayed/left _____

DATE	STATUS
6/23	Found Nest - right where ♀ was yesterday. Flushed her off of very white - fresh J. eggs.
6/27	♀ on 4045
6/29	DID INCUBATE WATER 60 MIN
6/30	♂ & fled ♀. Her whole tail fell out.
7/2	at 12:45 one had just hatched, ♀ on. She didn't go near fledgling.
7/3	2 HATCHES @ 630 - Tried to catch ♂, no luck. He is still feeding the fledgling.
7/4	VN watch, ♂ did not come
7/5	VN watch, ♂ did come
7/6	Weighted 3 young - took one unhatched egg
7/8	NESTWATCH; BOTH FEEDING, ♂ MORE; ♀ GONE ~48% OF TIME - FEEDING FLEDGLING? TAIL STILL ~ 1/2 LENGTH; SAW ♀ FEED NESTLINGS A LIZARD (SALAMANDER?) BANDED 3 NESTLINGS: 50 DK GRN-R, 2 RED/BLK-, LAV O ORG-, YEL O WHT-R
7/11	Nest watch - 3 young / 7-12 - looked for fledgling + parent fnd - ♀ rejected
7/13	Rather bad nestwatch. got feeding rate but no good data no time in sight (♂ 70' +) Thought I heard fledgling. anyway ♂ was bled for hormone, ♀ for 2H20
7/14	Fledged nest at 6:40 am. ♂ placed fledglings on W side of road in opposite side of road to where nest is. - 3 young.
7/15	FOUND 2 RED/BLK & LAV O ORG FLEDGLINGS - 3 NOT CERTAIN ABOUT STATUS OF 3rd - WATCHED FOR ~45 MINS.; PARENTS ALARMED, BOTH FEEDING; FOUND THEM IN POWERCUT ~40 YDS. N OF NEST
7/17	FOUND ALL 3 FLEDGLINGS: YEL O WHT, LAV O ORG, 2 RED/BLK; BOTH PARENTS FEEDING, ♂ TRY ALARMED; FOUND ABOVE NEST & TO S ON EDGE OF WOODS
7/21	FOUND 2 FLGS: LAV O ORG, 2 RED/BLK N OF NEST, ABOVE & BELOW RD.; ♂ FEEDING PROFUSELY, BOTH ♂ & ♀ ALARMED

back date = start
 6/22 inc. 2:30
 6/23 2:30
 6/24 2:30
 6/25 2:30
 6/26 2:30
 6/27 2:30
 6/28 2:30
 6/29 2:30
 6/30 2:30
 7/1 2:30
 7/2 2:30
 7/3 2:30
 7/4 2:30
 7/5 2:30
 7/6 2:30
 7/7 2:30
 7/8 2:30
 7/9 2:30
 7/10 2:30
 7/11 2:30
 7/12 2:30
 7/13 2:30
 7/14 2:30
 7/15 2:30
 7/16 2:30
 7/17 2:30
 7/18 2:30
 7/19 2:30
 7/20 2:30
 7/21 2:30
 7/22 2:30
 7/23 2:30
 7/24 2:30
 7/25 2:30
 7/26 2:30
 7/27 2:30
 7/28 2:30
 7/29 2:30
 7/30 2:30
 7/31 2:30

JUNCO NEST LOG SHEET

NOT
SHARP W/DRY

Nest I.D. WVS 182
Female:

Treatment Group Injected
Date Found 5/26/89

Band 2011-83657

Status when found ♀ INCUBATING

Colors SO DRK BL/YEL (R) DRGN/LTGN

Male.
Band # 2021-09887

Colors 2 LTGN/DRGN (R) LAV OS

Loc. ABOUT 15 YARDS PAST 1ST POWER CUT ON ROUTE 700. VERY HIGH IN BANK 10'-12'.

Eggs laid 3 # Hatched, Date 6/11

Date Incub. Onset _____ # Fledged/Fail, Date 6/12 Fledged 3

Male Bled (Y/N), Date _____ Implant Removed (Y/N), Date _____

Female Stayed/left _____

DATE	STATUS
5/26	FLUSHED ♀ OFF NEST 3 J EGGS. (2 ALMOST WHITE 1 WHITE → PALE GREEN) very long. SET BAIT TRAP ON ROUTE 700.
5/28	EGGS WASH @ 1110.
6/11	2 WATCHED, ONE EGG
6/2	Did nest watch, 3 hatchlings
6/5	♀ ON @ 700
6/6	Caught ♀ @ 900 ♂ @ 924 ROUGHEN FOR DOUBLY CAPPED WATER.
6/7	weighed 3 nestlings at day 6 - Did nest watch, re-cl. ♀ for rebleeding at
6/9	Both feeding @ 500
6/10	645 ♂ singing, ♀ 2 AMPS. WILL BE HARD TO CATCH. Gross nest watch, NO LUCK CATCHING ♀. Got ♂
6/12	Fledged 3 young - weighed & Took Feathers. Lt & Bled ♀.
6/13	Saw Lt 6 long fledgeling. Both parents very alarmed. Behind old nest in woods (uphill from nest).
6/14	Saw Lt 6 long. woods uphill from nest. He also spent time on bank (by old nest) and crossed road (6/13). ♂ Sing a lot
6/15	Saw Lt 6 long on road just east from nest, saw ♀, do not know how many had sugar from ♀♀ birds, IV at 10:00Z.
6/16	Saw Lt 6 long in same place as 6/15. Saw both adults, both alarmed too windy to determine whether they all others. lots of rain later
6/17	Saw Lt 6 long, SAME MALE (I THINK) - ♂ FED GK, DID NOT SEE ♀ ANYWHERE!!! DID A 1 HR FLEDGLING WATCH - SAW NO OTHER FLEDGLINGS - FED BY ♀? LIF ALIVE

JUNCO NEST LOG SHEET (CON'T)

DATE	STATUS
6/22	Old Fledgling watch - ♂ only fed - only 1 kid. ♀ seems to be re-nesting - followed her to bank near old nest - she fed leisurely, chipped mildly at me. I think her nest is in there. ♂ heard a ♂ chestnut-sided warbler that was chipping nearby a few X.
7/2	Saw fledgling. ♂ fed, not ♀.
7/19	OT THE FLEDGLING (LT GRN/orc) @ HOTEL CONDOS (NEAR HOTEL 24 NEST)
7/21	Same as above

JUNCO NEST LOG SHEET (CON'T)

DATE	STATUS
6/22	FOUND FLEDGLING - IN FERNS + HIGH IN HEMLOCKS ALONGS FROM OLD NEST; ♀ + ♂ TOGETHER, ♀ CHIPPED A LOT, FED FLEDGLING IX, ♂ SANG A LOT (IN ONE STRETCH I COUNTED 20X IN <1 MIN.) ALSO MULTIPLE CHASES W/ INTRUDER. ♂ - DID NOT GET COLAS
6/28	Saw fledgling, ♀ chipped a lot. Near old nest.
6/28	Saw ♂ + ♀ + Fledgling in Ferns + Hemlock by 1st post in Powercut on N side of driveway (Near old nest). Tried to do fledge water but saw very little. Both adults chipped at me.
	1 CB egg + 1 S-egg
7/2	saw ♂, ♀, young, ♀ not yet rebuilt, area is near old nest but in wood and close to stream, adults chip here
7/3	♀ chipped at me once near powercut / driveway intersection
	I saw fledgling and both parents - both fed. Deep in woods, by stream
7/8	♀ seen still feeding big fledgling! No indication of nesting ♂ chipped at me a little at beginning of Rd to stream.
7/11	♂ SEEN w/ FLEDGLING (now a JUN); HE CHIPPED @ ME
7/18	seen with a ♀ who whose bands were not seen

JUNCO NEST LOG SHEET

Nest I.D. Dolinger 13-R Treatment Group _____
 Female: _____ Date Found _____
 Band 2011-22019 Status when found _____
 Colors SI 11 bl 0 a/rd - L red/or - R
 Male: _____
 Band # 2011-22105
 Colors SR 2 yll / lt greens - L
 Loc. Hemlock Tree
 # Eggs laid 4 # Hatched, Date 6/7
 Date Incub. Onset 5/27 # Fledged/Fail, Date _____
 Male Bled (Y/N), Date _____ Implant Removed (Y/N), Date _____
 Female Stayed/left _____

DATE STATUS

- 5/18 ♀ found presumably building, nest 8' up in hemlock, very sturdy, of hemlock twigs and moss, felt inside, no grass lining but as yet
- 5/20 VN reports nest with "soft lining", no eggs yet, parents free + upset, hole put not finally picked down
- 5/26 VN report 3 same-sized eggs, ♀ on
- 5/27 ♂ sees 4 eggs - I checked and all are J, ♀ was on, i.e. laid all 4 today.
- 5/30 ♀ incubating, Did incubation watch
- 5/31 ♀ incubating, attempt to catch ♂ by implant
- 6/1 ♂ tried to catch ♂, no luck
- 6/7 young hatched by 0900, VN tried to catch ♂ but no luck
- 6/9 still 4 young, both adults chirp
- 6/10 3 young, weighed all.
- 6/12 Did nest watch. ~~♂~~ ♀ fed. Nest is fitted, looks ~~unstable~~ ^{unstable}, only 1 nest. found one fresh dead under nest.
- 6/15 Did nest watch
- 6/18 Had already fledged (yesterday) - chased down kid + ct it, ct + bled both adult
- 6/21 Pair chirped + chirped at me right at hemlock of old nest - I couldn't find the fledgels. the pair struts ~~around~~ together a lot. Saw them out at Rd.

JUNCO NEST LOG SHEET

Nest I.D. Dolinger 13
 Female:

Treatment Group E Impl
 Date Found 4/28

Band 2011-22019

Status when found ♀ building - moss

Colors S-O Lt Blu ^{orange} ~~O Red-L~~, ^{red} ~~O Red-R~~

Male:
 Band # 2011-22105

Colors S-R, 2 Yell/Lt Gins L

Loc. Dolinger, in small ^{spruce} ~~hemlock~~ under Hemlock, S. side of front house

Eggs laid _____ # Hatched, Date _____

Date Incub. Onset _____ # Fledged/Fail, Date _____

Male Bled (Y/N), Date _____ Implant Removed (Y/N), Date _____

Female Stayed/left _____

DATE STATUS

- 4/28 Found nest - moss.
- 4/29 complete
- 4/30 empty, 21 hrs old 1030
- 5/3 1 Egg, did not mark, both adults chipped, bands seen, ♀ was on
- 5/4 0900 ♀ on, 0945 ♀ on, 1000 2 Egg, bud ♂ and ♀, ♀ has patch
 Implant OK
- 5/4 → I at Dol House, by 11:00, by implant, early out, replaced
- 5/10 nest has one cold junco egg in it, no chipping or other signs of ♀
- 5/11 Took 2 egg.
- 5/15 saw lots of old-looking nesting material in last year's nest site at
 base of tree, no sign of pair near house ~~nowhere~~
- 5/16 pair seen together, ♂ follows ♀ closely on E side of WWS from fence W
 into Dolinger yard, no Δ in stuff at base of tree
- 5/18 VN finds nest see Dol 13-R

JUNCO NEST LOG SHEET

Nest I.D. D01 14 - R2

Treatment Group T IMPL

Female:

Date Found 6/26

Band 0000 94114

Status when found grass + some hair

Colors 2 lt blu OS (D)

2 lt blu/red (R)

Male:

Band # 0000 94113

Colors red/wh OS - (R)

2 law - (L)

P.T.O. FOR MAP

on
ground
under
grass

Loc. by Trash can between car ~~club~~ cab and Iron jungle gym

Eggs laid _____

Hatched, Date _____

Date Incub. Onset _____

Fledged/Fail, Date _____

Male Bled (Y/N), Date _____

Implant Removed (Y/N), Date _____

Female Stayed/left _____

DATE STATUS

6/26 Found nest today, saw her carrying grass 6/25 in a.m. and p.m. when cool. Today (6/26) there was some hair in it.

P.T.O. FOR MAP

6/28 2 eggs in nest one on both Junco - 1 J. + 1 CB egg.

6/30 2 J EGGS, 2 CB EGGS

7/2 ♀ on at 10:30am. ♂ seen feeding c.B. fledglings

7/2 → saw a garter snake 10'-20' away - could this have been egg-crusher

7/2 1630 nest failed, crushed J egg in nest, looked like just J, ♂ attacked his image on the bottom of the slide, showed alarm. I saw 2 CB feeding with ♂, egg did not look developed but it was very young.

7/6 Saw both adults 30' behind house in a Hemlock. The Hemlock is on the path and I tagged a tree close by just in case you need to find a tree. I watched them for 20 mins just feeding.

7/8 Pair hang around old nest - S. side of house, near Truck & hemlock tree. ♂ chips at us a bit, ♀ even less. But both kept going up in to the big hemlock tree - I am almost sure she is building there. I think I saw nest. No CB young begged or were around.

JUNCO NEST LOG SHEET

* undeveloped egg

Nest I.D. Dolinger 14
Female:

Treatment Group T impl
Date Found 4/28

Band 2000-94114 Status when found ♀ building

Colors 2 Lt blue 30 S-L Right? 2 Lt bl/reds - R

Male:
Band # 2000-94113

Colors Red/white OS-R, 2 Lavs-L

Loc. Dolinger's, Powercut South of Front house - in Grass

Eggs laid ? # Hatched, Date 2 CBs only

Date Incub. Onset _____ # Fledged/Fail, Date _____

Male Bled (Y/N), Date _____ Implant Removed (Y/N), Date _____

Female Stayed/left _____

- | DATE | STATUS |
|------|-----------------------------------------------------------------------------|
| 4/29 | Val saw ♀ building |
| 4/30 | VN = EK saw her building, found grass nest, she's not quite coordinated yet |
| 5/3 | nest complete but empty, 2 adults chipped, ♀ bands seen, left leaf |
| 5/4 | ♀ was on nest but nest empty at 0905 |
| 5/5 | Nest Gone?? |

5/5 saw pair, ♂ excited (song, puff, tail spread), ♀ not incubating, is she building or laying? saw wood piles on E side of cut and near Hemlock between cut and road, ♀

- 5/15, 19 ♀ seen by VN perched on side of power cut, sitting, no chirps
- 5/16 saw ♂ + a UI ♀ near same Hemlock, ♂ chipped but a bait pile was new
- 5/21 saw ♂ at Road - chipped w me near bait pile - flew off into power cut.
- 5/22 ♀ chipped w me at flag near woodpile.
- 5/27 saw ♂ in power cut near woodpile, no rx
- 6/9 EK/VN saw ♂ (95% ID of bands) at 2nd telephone pole S of Dolinger. UI ♂ chipped at that location but we did not find nest ☹️

6/12 Val found nest!! It is in power cut, just S. of Dol. house, where we've been chipped at alot. 2 CB young ~ day 5-6, 3 unhatched, undeveloped J-eggs

6/17 ♂ or ♀ SLED - used CB FLEDGLING TO CATCH HIM IN NET - ♂ WAS FEEDING
 ♂ did not have implant although he was what bruised suggesting he might have lost it recently. He had a very small clo po - recall eggs were infertile (MILBUT)

6/19 ♂ + ♀ CHIPPING @ ME IN TREE TO LEFT + IN FRONT (CLOSER TO RD.) OF HOUSE (MISN
 6/21 pair chipping at front gate.

14-R

JUNCO NEST LOG SHEET

Nest I.D. Dolinger 15 Treatment Group I inel
 Female: _____ Date Found 6/9/89

Band 2021-09673 Status when found ?

Colors blk/yel-R SO org O dk blue-L

Male Band # 2021-09206

Colors S-R 3 brn / lt green-L

Loc. on road leading W from Dolinger's house, in Hamlock on left side 13' up

Eggs laid _____ # Hatched, Date _____

Date Incub. Onset _____ # Fledged/Fail, Date _____

Male Bled (Y/N), Date _____ Implant Removed (Y/N), Date _____

Female Stayed/left _____

DATE STATUS

6/9 nest elevated, 13" in Hamlock, base largely of leaves ^{not} moss, ♀ on, but did not return in 30' and ♂ re-^{re-}worked strongly to top. Is she still laying? best notes
 I saw SO org O dk blue-L blk/white-R
 blk/yel-L 2021-09678
 blk/yel-R 2021-09673

earlier captures indicate latter
 note: seen at different ♀ by W or G/2 (white/red OS-L white O dk green-L)

6/12 VN has looked 2 days in a row, nest apparently unfinished

JUNCO NEST LOG SHEET

Nest I.D. Dolinger "17"

Treatment Group E IMPL

Female:

Date Found 6/4/89

7/17

Band ~~201-22698~~

Status when found ♀ carrying fine grass/hoir.

Colors SO lav-L red/lt green-R

Male:

Band # 2021-09761

Colors SO Pnk O DK Blu/white-R, DK Blu/Yel-L

Loc. _____

Eggs laid _____ # Hatched, Date _____

Date Incub. Onset _____ # Fledged/Fail, Date _____

Male Bled (Y/N), Date _____ Implant Removed (Y/N), Date _____

Female Stayed/left _____


DATE STATUS
 6/4 Singing
 Saw him w/ ♀, who flushed up from power cut, fine grass/hoir.
 She did not chip; flew N. a little - I lost her. ♂ counts singing
 alot w/ Red lav Red.

7/17 ♂
 ♂ by VN WVS tag 6, removed both empty implants (capture
 record on LW's sheets, ♀ 2011-22698, caught at same net 2 hrs
 later ∴ conclude they are a pair

5/27 ♂ seen with SO lav-L red/lt green R (see pair log sheets)

WP1402 Cont.

JUNCO NEST LOG SHEET (CON'T)

DATE	STATUS
	See back of other page for 6/10 - 6/14.
6/17	Saw <u>all four</u> fledgelings area includes just up hill of old nest, down in gully around boulder and tree falls. Saw an intense interaction between 2 pairs - WP140 + WP146 I think - Stone boulder and tree falls (where 146 was). May not have seen 1+BL/BLK - I thought it was supposed to be LtBL, maybe got confused w/ ♀'s colors?
6/20	Saw LtBL/BLK and yel, near boulder, ♀ fed, young shy high in trees
6/21	Looked for a nest in terr - no luck. - WP151 ♀ may be polygynous w/ this ♂ (see WP151)
6/22	Could not find much, fledgelings are up very high on bank, behind old nest.
6/23	Saw 3 fledgelings - all but LtBL/BLK, way up above rock face, went down to boulder. They forage. ♀ feeds. The ♂ <u>1+BL/BLK-R</u> was w/ them. Chipped when I was near the fledgelings, courtship behavior, stayed close to family, ♀ followed him. - <u>No sign of this ♂!</u>
2031 33111	→ S0DBLGR-L → 1+BL/BLK-R
6/24	See <u>WP151-R</u>
6/29	♀ still depends - saw yel and DkBL. New ♂ nearby - saw no feedings. young still beg - feed selves. - Still no sign of this ♂
6/29	Searched area for nest, nothing, unless new start at tag 14 by rock face (on main trail) is here. If it isn't, whose is it? Is it really a new start? I think so. Tag 14.1  nest start under clump of grass 6" up of ground on rock face side.
7/1	Saw same 3 fledgelings - yel, DkBL and Lar/BLK. ♀ still chirps and spends a lot of time w/ fledgelings. Saw a feeding - I didn't get birds (WP146?) Also saw an unbanded juv at boulder (WP151?)
7/2	Saw Lar/BLK - still begged, but was with a UB Juv.
7/9	Saw the yel fledgeling - still near nest.
7/18	looked for ♀ ♂ and any nest. 90 singing in area - no ID.
7-19	Saw DkBL juv. - at boulder. 7/22 - no sign of her or anyone

JUNCO NEST LOG SHEET

Nest I.D. WP 140-R

Treatment Group T impl

Female:

Date Found 5/14/89

Band 1700-7166

Status when found Moss-stage

Colors S O 2 Lt Blue-L, Dk Blu/Yel-R

Male:

Band # 2021-09148

Colors S O DK Grn O Red-R, Org / Blk -L

Loc. WP Tag 16 in bank (uphill)

Eggs laid 4

Hatched, Date 5/27 (5/28)

Date Incub. Onset 5/15

Fledged/Fail, Date exp 6/8

Male Bled (Y/N), Date _____

Implant Removed (Y/N), Date _____

Female Stayed/left _____

DATE STATUS

- 5/14 Saw pr. chip w Tag 16- Nest mossy.
- 5/12 New nest has some deer hair - but most construction halted by weather.
- 5/10 nest has 1 junco egg in it, I marked it 1.
- 5/15 3 J. eggs! ♀ on, ♂ song in am near bank pile - at tag 17.5, ♀ on at 1820
- 5/17 ♀ on 4 eggs - Ct & bled ♂ - wt = 21.6 Implants OK.
- 5/20 Ct both in trap w diff. times - weighed ♂ (21.8), but let ♀ go because I was bleeding another bird and she got caught w/ a red-bellied woodpecker, so I did not bleed her. ♀ on 4 eggs.
- 5/21 Ct & bled ♀. 4 eggs.
- 5/22 ♀ on.
- 5/23 2. nest watch, 4 eggs.
- 5/24 all OK - 4 J. eggs
- 5/26 Licia checked, 4 J eggs
- 5/27 ♀ on nest, flushed her → 4 nice Junco eggs.
- 5/28 NESTWATCH DONE - 3 ~~nestlings~~ NESTLINGS SEEN, BUT MAY BE (4) YES (NOT ENOUGH BLOOD COLLECTED); ♂ CT BUT NOT SEEN DURING NESTWATCH (ALSO NOT BLED)
- 5/29 STILL 4 J. NESTLINGS; ♀ SEEN ~~INCUBATING~~ BROODING
- 5/31 Nest watch, 2 J, both fed Weighed Young.
- 6/1 ♀ on - Ct ♂ & weighed. Both Implants Fine.
- 6/2 Did nest watch, still 4 birds
- 6/3 all ok
- 6/4 watched nest. ♂ no food
- 6/5 4 kids ok
- 6/6 "
- 6/8 Fledged 4 young, caught ♀ and bled her ♂ at same time

IN NET, AFTER HAVING FLEDGED.

ALSO CAUGHT ♂ AT SAME TIME

4 young, caught at 123.

JUNCO NEST LOG SHEET

Nest I.D. WP140
 Female:

Treatment Group T
 Date Found 4/20/89

Band 2700-2656

Status when found Dug-out cup

Colors S O 2 Lt Blues-L, dk Blu/Yel-R

Male.
 Band # 2021 09148

Colors S O dk Grn O Red-R, Org/Blk-L

Loc. WP Rd
 Rock Face Boulder (Tag 18)

Eggs laid ? # Hatched, Date exp ~ 5/13-14

Date Incub. Onset ~ 5/2 # Fledged/Fail, Date _____

Male Bled (Y/N), Date _____ Implant Removed (Y/N), Date _____

Female Stayed/left _____

DATE STATUS

- 4/21 KB found dirt cup 4/20, today pr. was there building-advanced moss stage
- 4/24 all nice - deer hair. birds gone.
- 4/25 ~~♀ checked~~ at ~~ex~~ as ~~pr~~ checked nest, it was empty
- 4/26 No egg - Saw pr around Tag 16.
- 4/28 still empty.
- 5/2 ♀ on - 2 cb, 2 S-eggs
- 5/4 Failed - Nest empty - a few egg shells scattered around - Saw pr chipping at a new nest in bank, Tag 16 - See ~~with~~ WP140-R

JUNCO NEST LOG SHEET

Nest I.D. WP141
 Female: _____

Treatment Group I
 Date Found 4/26/89

Band _____

Status when found Moss

Colors _____

Male _____

Band # _____

Colors _____

Loc. WP Rd, stream area, upstream from Rd. in Treefall
 (Tag 30)

Eggs laid _____ # Hatched, Date _____

Date Incub. Onset _____ # Fledged/Fail, Date 5/26 (F)

Male Bled (Y/N), Date _____ Implant Removed (Y/N), Date _____

Female Stayed/left _____

DATE	STATUS
4/26	Found moss nest in treefall. Don't yet know whose it is.
4/28	Same!
5/2	Kaput <u>2 NU 2</u>
5/21	→ oh boy - nest complete, w/ @ CB egg in it. left it.
5/22	Same.
5/26	Empty - L.W.
5/30	~ tag 28 chipping

JUNCO NEST LOG SHEET

Nest I.D. WP142
 Female:

Treatment Group I-T-impl
 Date Found 4/26/89

Band 2011-22698

Status when found Mass ve bit of grass

Colors S S Lev-L Red/Lt Grn-R

Male.
 Band # 1720-27738 (1720-27388?)

Colors Red/ora O S-R, 2 Wht/Red O Red/White-L

Loc. WP Tag 9, in bank

Eggs laid _____ # Hatched, Date _____

Date Incub. Onset _____ # Fledged/Fail, Date _____

Male Bled (Y/N), Date _____ Implant Removed (Y/N), Date _____

Female Stayed/left _____

DATE	STATUS
4/26	♀ chipped right across from nest - found nest - very mossy, covered up a bit w/ over-growing stuff.
4/25	♀ chipped nearby tag 9, not hit as lining
4/28	Grass stage now.
4/27	♂ ch. in trap at tag 6 w/ ♀ in trap. ♂ had large clopro, ♀ no patch. Center ♀ 2011 22317 LtGr/P-R S O Bk O Lg/P ch. in that trap.
5/2	Hmm - not much change - not really any grass. ♂ chipped w me in gully, but no nest in tree falls
5/4	Grass today.
5/12	Same - all stopped.
5/15	No luck!
5/20	♂ sing near net - I think nest is in gully.
5/21	" "
5/22	looked all in gully for nest - no luck.
5/28	False start at tag 10 JAK
6/1	Moss start tag 8.7
6/3	Nest just about complete!! ♂ chips close by.
6/29	Searched upper + lower bank + in gully, no luck
7/12	Seems to be another ♀ in area, nest found tag 9, ♂ bands not seen. See 150 150-R

JUNCO NEST LOG SHEET

Nest I.D. WP143
 Female: _____

Treatment Group E IMPL
 Date Found 4/28/89

Band 2000-94117

Status when found ♀ building

Colors Lt Blv O Red O S-L, Lav-R

Male.
 Band # 2000-94327

Colors Rd/Lt Grn O S-R, 2 Lt Blues O Red-L

Loc. WP Tag 24 → (25.5) new nest

Eggs laid _____ # Hatched, Date _____

Date Incub. Onset _____ # Fledged/Fail, Date _____

Male Bled (Y/N), Date _____ Implant Removed (Y/N), Date Y, 7/17

Female Stayed/left _____

DATE	STATUS
4/28	♀ chipped a nest - moss start.
5/2	Hmm - only a touch of grass. Maybe abandoned.
5/4	Hmm she chips here - nest still dark inside.
5/12	Same state.
5/15	Found new start - has Red thin grassy stuff. ♂ (not perfect ID guess) <small>small chip from WP 4 28</small>
5/18	Saw her chip some Tag 26 - Complete & empty w Tag 25.5 - Just a 26 there is a new start w/ moss?
5/21	still empty. Ct & Bled ♂. Ct ♀ later in day, & ♂ again. She has a big abdomen.
5/22	still empty.
5/23	J. egg 1!
5/24	only 1 J. egg still.
5/26	Hmm - 3 J. eggs but nest is all flattened out, & eggs are fallen into bank- vegetation area below rim - they're intact. I put nest back together & put eggs back in. Cold.
5/27	3 cold + wet Junco eggs, no adults in immediate area.
5/29	still 3 cold + wet J eggs, no adults seen or heard → must have failed (I left a leaf in the nest just in case)
5/31	still cold Took 3 eggs. 1 had a puncture.
6/1	→ Saw Both of Pair in gully at Tag ~ 24 - Glade with Tree fall. They (♀) chipped w me alot near Tree fall; found only pre-lim. start (moss) in a cavity in mossy area of tree fall. (left)
6/3	Nest no go - found a failed nest in tree fall here, w/ remains of J. + CB eggs.
7/12	Tag 23 a start? ^{old} an old start?
7/17	PPC Ct, <u>EX removed by implant</u> , short rot tree moss 24.3, at 1620

WP144R2

JUNCO NEST LOG SHEET (CON'T)

DATE	STATUS
7-15	<p>Jim Karr had reported unbanded- dependent young at WP near entrance, I caught this ♀, a different ♂ - 3500-943 1720-27774 - SO Lt bl O Pink-R Lt Bl / Blk-L had not implanted. Also caught 2 juveniles - no yellow on bills, full tails - in same net. I was chipped it by ♀ for sure in area - by someone at net w/ juv. Still some unbanded young there.</p>
7/22	<p>Saw this ♀ w/ at least 1/2-tail fledglings. She chipped - heard another bird chip, but didn't see who. ~ Tag 2, uphill from rd, just past Gate.</p>
7/25	<p>Saw two ♀, at least 1 fledgling (prob. only 1) with 1/2 tail. Saw a ♂ too, but ID not perfect. left left leg: one stripe, light/ dark, I thought maybe Lt Bl / Lt Bl. One foot: I guessed SO blk O Lt Bl - R (-). could it be ♂ listed above (1720-27774)? at another possibility right foot does not really match</p>

JUNCO NEST LOG SHEET

Nest I.D. WP144-R
 Female:

Treatment Group _____
 Date Found 5/15/89

Band 2011-22317

Status when found Complete empty

Colors S O Bks O Lt Grn/Pnt-L, Lt Grn/Red-R

Male:

Band # 990-06613

Colors S-R, Yel O Dk Blv O Yel-L

Loc. ^{WP-} Tag ~ 6.5-7 in bank

Eggs laid _____ # Hatched, Date _____

Date Incub. Onset _____ # Fledged/Fail, Date _____

Male Bled (Y/N), Date _____ Implant Removed (Y/N), Date _____

Female Stayed/left _____

DATE STATUS

5/15 Found nest! - Complete

5/17 Nest empty changed it for a x J. egg

5/18 ^{J. egg} CF + bled both. ♀ was heavy (24.6), but no 2nd egg.

5/20 Still no more eggs - ~ 930. ♂ = 22.6

5/21 Oh boy. a new J. egg today. Looks good - no funny air bubbles.

5/22 Hmm - ♀ on w ~ 910, but no new egg. Was not on later.

5/24 only 1 x CB egg! Took it out.

kaputze

5/28 Tag b - ~~on~~ uphill bank, marked w/
 usual flagging on same branches
 a white plastic bag ^{PAR}
 - Just a start ~ moss

JUNCO NEST LOG SHEET

Nest I.D. WP 144
 Female:

Treatment Group _____
 Date Found 5/2/89

Band 2011-22317

Status when found 3 J. eggs, cold - ♀ laying

Colors S a Blk a Lt Gm/Pink^L, Lt Gm/Red-R

Male.
 Band # 990-06613

Colors S-R, Yel a Ok Blv a Yel-L

Loc. Tag 4, bank of stream, near rusted barrel

Eggs laid 4 # Hatched, Date 5/15 exp.

Date Incub. Onset 5/3 # Fledged/Fail, Date _____

Male Bled (Y/N), Date _____ Implant Removed (Y/N), Date _____

Female Stayed/left _____

DATE STATUS

5/2 Found nest - had 3 cold J. eggs. ♀ was caught yesterday w/
 brood patch - marked eggs 1, 2, & 3, but broke #1 ☹

5/4 ♀ on - 3 eggs.

5/3 ♂ a c.c.p.s, 2y clspns, 5 mm implant not seen

5/12 ♀ seems to have abandoned nest. went ~5/9 to do watch, & eggs cold.
 Same today - saw pr. near bait. 8-

5/13 Found new nest - see WP144-R

JUNCO NEST LOG SHEET

Nest I.D. WP145-B
 Female:

Treatment Group E IMPL
 Date Found 5/29

Band 2021-09854

Status when found gross

Colors S O white O dk BL - (L) , red/lt gym - (R)

Male.
 Band # 2011 22739

Colors org/BLK O S - (B) BLK O red - L

Loc. WP tag 19, uphill bank, opposite tag marked WP 145-R

Eggs laid 2 # Hatched, Date if incubated then 6/17 hatching

Date Incub. Onset 6/4 # Fledged/Fail, Date _____

Male Bled (Y/N), Date _____ Implant Removed (Y/N), Date _____

Female Stayed/left _____

DATE STATUS

- 5/28 Old ♀ removed due to injury
- 5/27 New ♀ caught at tag 20 w/ abax ♂.
- 5/28-29 New nest shows up!
- 5/31 Complete - empty.
- 6/1 " "
- 6/3 2 J. eggs!!
- 6/4 Still 2 eggs...
- 6/10 2 eggs, female incubating, ♂ (who) heard singing in vicinity
- 6/14 Failed - nest all ruffled, 2 intact J. eggs (cold, wet) 1/2 shell.
- 7/2 Saw ♂, tag 17 area, I think w/a ♀; he was making courtly noises. Couldn't see her bands. They flew up into woods - heard singing in his feet a few times this a.m. (lots of Juv.s around - Adults appear annoyed at them.)
- 7/12 Saw ♂ feeding on ground for 5 mins around tag 19. He was alone. He chipped at me a little but then went on his merry way + fed again. No sign of nest or ♀
- 7-17 ♂ ♀ at WP tag 22 - tail fell out in net
- 7/20 CT @ TAG 20 IN NET, TAIL STILL GONE (AHEM... It doesn't grow back overnight.)
- 7/25 ♂ dead in netting accident (⊖), empty implant sticking out

JUNCO NEST LOG SHEET

Nest I.D. WRP1415 R
 Female: 2011-22891
 Band 2011-22891
 Treatment Group _____
 Date Found 5/2/89 → 5/15/89
 Status when found Complete, empty
 Colors S O Dk Blu O Org (H), Blk/white (R)
 Male: _____
 Band # 2011-22739
 Colors Org/Blk O S-R, Blk O Red-L (I think)
 Loc. WRP Tag 19, down hill bank, Tag 19, Uphill bank
 # Eggs laid _____ # Hatched, Date _____
 Date Incub. Onset _____ # Fledged/Fail, Date _____
 Male Bled (Y/N), Date _____ Implant Removed (Y/N), Date _____
 Female Stayed/left _____

DATE	STATUS
5/2	Found nest- grass stage- not sure if active.
5/4	Still grass stage...
5/12	" "
5/15	- Found real nest- in uphill bank, a bit closer to rd than last start - complete & empty.
5/17	empty. ♀ chipped w me here this a.m.
5/19	5 eggs 1 + 1 CB egg. Did not mate.
5/20	ct & Bled ♂ (wt=24.0) - Big C.P. Implant OK. Still 1 J + 1 CB egg.
5/24	Only 1 CB egg today. Grrr.
5/22	Same -
5/23	Samran ct at tag ²⁰ , ♀ has severe wound in the area between the thigh and abdomen. Looks like a wound that's healing but she won't walk normally. St & L decided to hold her because she looked thin. She had a pusten but I think it ^{was} was ^{and they had} she would be able to incubate. I think she must have been grabbed by a predator.
5/25	♀ is in her own cage, applied anti-bacterial cream. Bone (femur) poking out by top thigh. She is very emaciated, no fat in periculum.
5/28	Nice looking nest on uphill bank, can't believe it has been there since 5/15. ct another ♀ in area Tag 20 5/27 w/ above male. 2021_09 854 SO w/ 20 red/ct in it
5/29	There are <u>2</u> nests on uphill bank one w/ grass one w/ hair both have leaves in it. Please check

JUNCO NEST LOG SHEET

Nest I.D. WP146F
 Female: _____

Treatment Group E IMPL
 Date Found 6-22

Band 1722-7861

Status when found Junco nest-like cavity

Colors Blk/Yel DS-L, 2 Blk/R side-R

Male.
 Band # 1750-63992

Colors SO L + Grn O Blk -R, Blk/White-L

Loc. Tree fall facing the old nest, tag 14, down in gully - 2 tree falls facing each other.

Eggs laid _____ # Hatched, Date _____

Date Incub. Onset _____ # Fledged/Fail, Date _____

Male Bled (Y/N), Date _____ Implant Removed (Y/N), Date Y, 7/10, [initials]

Female Stayed/left _____

DATE | STATUS

- 6/23 Nest cavity I found yesterday has a little grass in it today, the green leaf is gone.
- 6/25 Some hair - not quite done yet
- 6/29 3 junco eggs - ♀ not on.
- 6/29 Nest start at tag 14, either old or not here, or not a nest start.
- 7/1 Failed - Nest empty - no sign of pair (or fledglings)
- 7/2 No sign of a re-nest.
- 7/5 caught ♂ + ♀ at tag 16, ♂ still had E implant, large only, we removed it mass at 1550 = 24.2
- 7/11 DEP recaptured ♂, small implant here (apparently not seen yesterday), we removed it. mass at 1700 = 20.0!
- 7-20 ♂ very alarmed when we fledged WP151-R. He flew into the net when I made young scream - another adult too we didn't do. different ♂?
- 7/20 Saw a mature fledgling / juvenile in area of 151-R also saw another adult at 151-R aside from above ♂ - may have been the female. ~~at time of bleeding 146 ♀ of 151 was in trap, ♂ was at nest and a lot of Junco was chirping at me. w/ ♂ 146 in hand~~
- 7/31 CT ♀ IN NET

WP 146 CONT.

JUNCO NEST LOG SHEET (CON'T)

DATE	STATUS
6/23	looked for fledgelings again, same story. Both chip at old nest site. No sighting or hearing of fledgelings.
	See WP 146 II
7-16	at pair at tag - see J
7-17	Caught 2 lvs juv in net at tag 5 - ♂, very large
7-19	at ♂ at WP tag 17 - nope error, not inisguish

JUNCO NEST LOG SHEET

Nest I.D. WP147
 Female:

Treatment Group E IMPL
 Date Found 5/21/89

✓ Band 2021-09200
S-L

Status when found ♀ incubating 4 developed J. eggs

Colors Org O Red O Org-R

Male:

✓ Band # 1720-27784

Colors 2 Red/Blks O S-R, Red/Blk-L

Loc. WP, Tag 12, downhill bank

Eggs laid 4

Hatched, Date _____

Date Incub. Onset _____

Fledged/Fail, Date 5/28

Male Bled (Y/N), Date _____

Implant Removed (Y/N), Date Y-7.16.7.17

Female Stayed/left _____

DATE STATUS

5/21 Found nest - ♀ on it - 4 J. eggs - look developed (not fresh).

5/22 all OK - still eggs.

5/23 " "

5/24 " "

5/26 ♀ on - 4 eggs!

5/28 No eggs

5/29 No eggs.

6/1 She chipped w us right at old nest !! Can't find any new ones, save for oldish start at Tag 10.

7/16 cl. ♂, EK removed

JUNCO NEST LOG SHEET

Nest I.D. WP148

Treatment Group _____

Female: _____

Date Found 6/1/89

Band (UB) _____

Status when found 3/4 complete, but a little hair

Colors _____

Male _____

Band # _____

Colors _____

Loc. Tray 26, In gulley, In South Bank

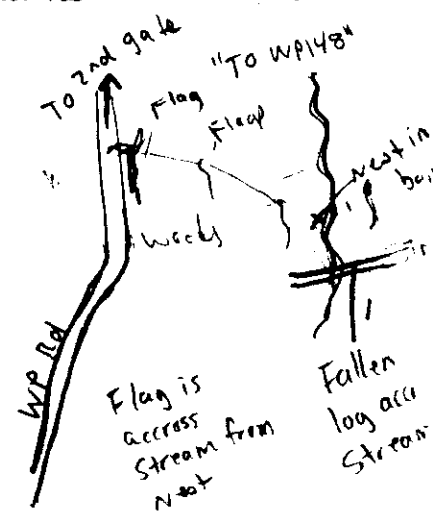
Eggs laid 4 # Hatched, Date _____

Date Incub. Onset _____ # Fledged/Fail, Date _____

Male Bled (Y/N), Date _____ Implant Removed (Y/N), Date _____

Female Stayed/left _____

DATE	STATUS
6/1	Found nest. UB ♀ chipped w me a bit.
6/3	Found Real nest. The one from 6/1 was a warbler nest - Real nest UB ♀ on 4 un-developed J. eggs. Flushed her - → chipped.
6/10	Failed according to Ellen -, ^{entire nest torn out,} intact nest, contents. ind



JUNCO NEST LOG SHEET

Nest I.D. WP149 + 149-R-R2 Treatment Group E IMPL
 Female: Date Found 6/3/89

Band 1600-63922 Status when found ♀ on 4 fresh J-eggs

Colors pk Gln O S-L, Pnk o Lt Blv-R

Male: Band # 1750-63922

Colors Blk/HT Pnk o S-R, 2 Blk/HT Pnks-L

Loc. wp Gully, ~Tag 40 - in 2-Banks, on South side of 2nd bank (of Dry stream Bed)

Eggs laid 4 # Hatched, Date _____

Date Incub. Onset _____ # Fledged/Fail, Date _____

Male Bled (Y/N), Date _____ Implant Removed (Y/N), Date _____

Female Stayed/left _____

DATE	STATUS
6/3	Found nest - flushed ♀ off - 4 fresh eggs.
6/5	4 eggs
6/6	4 eggs
6/10	♀ still in, still eggs, eggs were <u>developed</u>
6/14	<u>Failed</u> - nest empty.
6/21	Think I found re-nest! Tag 39, above Rd, ~10 ft up in hemlock. Empty - feels complete.
6/23	2 eggs, ♀ on (used mirror, # of eggs questionable)
6/29	Nest empty - Failed
7/2	No nest around Rd. found - heard ♂ sing in middle of his Terr.

WP149-R2
 7/25 Found new nest! In hemlock - end of branch - Rt across from nest Tag 40. ♂ chipped at me there - Did not see ♀ - Nest ~ 15 ft up - too high to see in.
 7-29 3 eggs - no ♀ or ♂ around

JUNCO NEST LOG SHEET

Nest I.D. WP 150-R Treatment Group T
 Female: _____ Date Found 7/12/89
 Band 2000 94728 Status when found Nest complete, no eggs - Grass Stage -
 Colors Yel o s D 2 law / BLK
 Male: _____
 Band # 2021-09154
 Colors S o BLK o orange (L) Org / Brn (L)
 Loc. Tag 9 (WP)
 # Eggs laid 3 # Hatched, Date _____
 Date Incub. Onset 7/16 # Fledged/Fail, Date _____
 Male Bled (Y/N), Date _____ Implant Removed (Y/N), Date _____
 Female Stayed/left _____

DATE STATUS

- 7/12 Dana spotted pair crossing road and as we arrived both chipped at us. Nest looks complete. ♂ Bands not seen. I will not assume it is her old mate because this nest is in WP142 territory - Grass stage
- 7-14 Looks done - has hair, some black
- 7-15 One junco egg
- 7/16 2 J eggs - 2pm shewas on! - off at 3:30 - eggs cold
- 7/16 ♂ of 2021-09154 s o blk o orange - K org / brn - L still had implant did not remove because still has active nest (probably) ~~2~~ eggs
- 7-17 3 eggs - ♀ not on - warm
- 7-18 3 eggs - ♀ not on
- 7/22 " ♀ just left to forage in gully - saw this ♂ - sang in gully Tag 6 - played song, he flew up, chipped w me. kept chipping, then flew up rd to nest area - ♀ came off & they went into gully together - twitted.
- 7-23 Failed - nest empty - cl. ♀ at tag 9

JUNCO NEST LOG SHEET

Nest I.D. WP150
 Female:

Treatment Group T impl
 Date Found 6/3

Band 2000-9428

Status when found MOSS

Colors Ycl 0 S-L; 2 Lck/Blks-R
 Male:

Band # 2021-09154

Colors 5 0 BIK 0 Lt Grn/Red - 1; 0 Lt Brown - 1

Loc. Tag 7, WP Rd - bank

Eggs laid 4 # Hatched, Date 6/20 6/21(2)

Date Incub. Onset ~6/8 # Fledged/Fail, Date

Male Bled (Y/N), Date _____ Implant Removed (Y/N), Date _____

Female Stayed/left _____

DATE	STATUS
6/3	Nest almost complete - ♂ chips nearby. → Maybe a different pair.
6/4	Complete.
6/5	empty
6/6	1; unco egg
6/8	3; unco egg - in a.m they were warm.
6/9	4 eggs!! ☺
6/10	♀ on 4 - 5pm
6/11	4 J. EGGS, ♀ FLUSHED, NO LONG CATCHING → NET + TRAP, WAITED 2 HRS.
6/12	♀ on 4 eggs
6/13	Flushed ♀ off - Found out who it was!
6/16	♀ on
6/17	Nest watch, ♀ on 4 eggs.
6/20	4 eggs still. - Ct & bled ♀.
6/21	2/4 hatched by ~1000. Ct ♀, weighed her. Still 2 w 1700
6/22	Still only 2 yng - other 2 eggs unhatched - not developed!! Tried unsuccessfully to catch ♂ - he came to nest area & chipped. ↓ I had some blood vessels but that was all.
6/23	Still 2 young, only one egg. ♀ on
6/24	Tried to catch ♂ - he never went to nest. 2 J. yng. Put the smaller 2 nestlings from HTL Cardoso II in hole - now 4 young. Weighed all. Tried to locate nest - something happened as on 6/25
6/25	Tried to watch nest w/ blind, they got very defensive, again, a truck went by and they left.
6/26	still no nest, wait @ 930. no action!! Nest @ 1100.
6/29	Searched for re-nest, no luck 7/12 - see WP150-R

JUNCO NEST LOG SHEET

Nest I.D. WP151 151-R
 Female:

Treatment Group T
 Date Found 6-16

Band 2000-94729

Status when found 0 on 5 egg

Colors Y OS-L, Blk Yel-R

Male.
 Band # 2031 33111

Colors SO DkGr Red -R LtBl O White -L

Loc. Near Boulder, upstream w/20 meters on ground under roots (just to the r. of flag)
Tag 17 - WP151R in boulder. old WP143 nest see 6-21

Eggs laid 4 # Hatched, Date 7/6(?) ~ 7/8 (4 hatched)

Date Incub. Onset 6/25? # Fledged/Fail, Date _____

Male Bled (Y/N), Date _____ Implant Removed (Y/N), Date _____

Female Stayed/left _____

DATE STATUS

6/16 Found nest w/ 5 eggs.

6/17 Actually 4 junco, 1 CB - took CB, LW says eggs not fresh, developing.
 Saw Y OS-L, Blk (Dk Grn?) OY-R.

6/20 Failed - no eggs, hair + some grass pulled out
 6/21 ♀ chipped @ me at WP140 Boulder - nest in there that is almost complete, w/ some hair. I withdrew, she had hair in her bill, but I did not see her go to nest. Flew into WP140 Terr, a ♂ followed, but I couldn't see who!!

6/22 Nest not done, no green leaf. Didn't see ♀ at all.

6/23 Looks the same to me.
 6/24 J-egg I!! Not much hair in nest. Don't know which ♂ yet!!

6/25 2 eggs - ♀ on

6/29 ♀ on 4 junco eggs - did incubation work - I have a vague feeling that the ♂ is LBBOW-R, SO DkGr OY-R (see WP140R)

7/1 ♀ on. I have a feeling she's got fledgelings from a previous nest. Saw one unbanded juv at boulder. ♀ and ♂ got defensive, ♂ extremely. up by road. couldn't get his bands.

7/2 ♀ on. Did not see ♂.

7/7 ♀ on 4 eggs.

7/8 ♀ on 4 eggs - didn't hatch at 1500.

7/9 ♀ on 3 hatchlings - One unhatched egg - fell out of nest when handled - developed - may 1 bled ♀ (LW) - ♂ chipped

(2)

WP 151-R CONT.

JUNCO NEST LOG SHEET (CON'T)

DATE	STATUS
7/10	Did watch - ♂ did not go to nest, but had food 1 time. 4 NESTLINGS
7/11	CT + Bled ♂. Implants ok. He was going to nest.
7/12	attempted to assess identity of ♂. Due to bad lighting and foggy misted glasses this was not easy. However colors seem to fit. Both ♂ + ♀ chirped at me. 3 nestlings Did nest watch ♂ came to nest area 2x w/ food, but never fed!
7-15	Did nest watch - ♂ drink feed
7-16	nest still ok - cl. ♀ not at tag 17, ♂ IX - drink take in for implant
7-17	nest still ok - cl. ♀ not at tag 17, ♂ IX - drink take in for implant Hymen - nest active
7-18	Did nest watch - ♂ fed - later cl. ♀ in net.
7-20	Did nest watch - fledged only 3 young - did see others - may be fledged self: Caught both parents (see bled - other ♂ wandered into net)
7/21	SAW LAV-, CT YEL- IN ORDER TO NET ♂ + BLEED HIM, BUT NO LUCK - PARENTS WOULDN'T GO INTO NET
7/22	Both parents chip w me - Tag 16.
7/22	Female chirped a lot at me at boulder. ♂ very mild. Saw SR BERDONG-R Red/White-L - Did not see fledglings. definitely still some alive
7-23	Cl. + bled ♂
7/25	Saw pr. chip at Tag 16, On Rd above boulder - at least 2 Fledglings.
7-24	Saw yel fledgling. ♀ chirps a lot, ♂ moderately.
7-29	Saw yel again, I think 2 or more alive - very hard to see
8-3	Couldnt ID any. ♀ still chirps like mad + they fly high and across stream
8/5	SAW YEL- FLEDGLING, STILL ATTENDED BY ♀; WATCHED ~45, COULD NOT FIND ANY OTHER FLEDGLINGS (SHOULD NOT BE CONSIDERED DEFINITIVE)

JUNCO NEST LOG SHEET



Nest I.D. Hotel Condo B-R

Treatment Group _____
Date Found 7/18

Female: _____
Band S O Yel (R) DK BLU / Lt BLU (L) Status when found 3 eggs incubating

Colors _____

Male: _____
Band # 1720-27640

Colors Lt BLU / BLK O & (R) 2 Pnk BLK (L)

Loc. Behind Ent Barn in woods. See diagram on back

Eggs laid _____ # Hatched, Date _____

Date Incub. Onset 7/18 # Fledged/Fail, Date _____

Male Bled (Y/N), Date _____ Implant Removed (Y/N), Date _____

Female Stayed/left _____

DATE STATUS

7/18 Found nest. it is on ground. 3 eggs warm. ϕ ¹ flushed ϕ .
Need to check if fresh or not.

7/19 The egg are well developed. ϕ is quite tame as they show alarm - try approach to gentle close would be good for a picture.

7/23 nest empty, egg gone, bird not disturbed. saw σ M song from uphill the path of the end pen. Tho M song, he did not sing as frequently as an unmated σ , did not see ϕ

7/25 σ in prolonged encounter with Hotel 24 σ . Hotel 24 was on his own territory in trees on lakeside of condos. He was making country noises as I approached (loudly). He was puffed. Condos σ then became the aggressor. He (condos σ) approached Hotel 24 σ 5-6 times independently. Grew more puffed, approached ever closer. Finally $\{ \} \{ \}$, Hotel 24 σ ~~stepped~~ and leaning away, Condos σ stepped and leaning toward. Condos σ then started a flutter up. They went up, fell 11' or so. Condos σ flew toward park lot and sang; Hotel 24 gave a trill (the way mad ϕ do) then it was over. Interp: either Hotel 24 σ has a fertile ϕ or its some kind of boundary maintenance dispute.

7/31 wood sample removed sawt implant log already gone, 1 injured wing held

JUNCO NEST LOG SHEET

Nest I.D. Hotel Condos P Treatment Group T IMPL
 Female: Date Found 7/1/89
 Band 2021-09423 Status when found 1 J., 1 CB egg ^{♀ laying}
 Colors S O Yel - B, Dk Blu/Lt Blu-L
 Male:
 Band # 1720-27640
 Colors Lt Blu/Bk OS-B, 2 Pk/BKCS-L
 Loc. ~ 8 ft up in buckthorn tree, in 1st fork of trunk & brush, above bank Behind Barn
 # Eggs laid _____ # Hatched, Date _____
 Date Incub. Onset _____ # Fledged/Fail, Date _____
 Male Bled (Y/N), Date _____ Implant Removed (Y/N), Date _____
 Female Stayed/left _____

DATE STATUS

- 7/1 Found nest 1 CB, 1 J. egg. ♂ sings off & on in area. ♀ not seen. ~~EXVII confirmed only band, ♂ is excited singing lot, ♀~~
~~seen in area at barn~~
- 7/4 neither male at 4:30 - failed to see ♀ for some time between barn & woods
- 7/6 Saw pair foraging around banks below barn, above Gallery. A 2nd ♂ with them squabbling w/ condo ♂.
 ♂ (hand: 10a) with 2 ♀s in area.
 saw pair behind ent-barn foraging - no interactions w/ other birds in the 7 mins they were in site, EK
 11:05
- 7/17 ~~observed~~ observed ♂ singing on top of ent-barn and then flew to woods behind where/when ♀ flew out of same tree + foraged on ground for 2-3 mins + re-joined him. They both chased a juvenile away from spot (10-15 feet from road into woods, directly behind barn).
~~at 11:35~~ 11:35 left the pair as ♂ was singing above barn again