



Selling Condos when the Rent is Free



David Hancock – dyhancoc@iu.edu
Senior Manager, High Performance Systems
Research Technologies
Indiana University

Flickr user A.Davey, Real Estate Meltdown (2009)

Flickr user varlen, Formula 1 Grand Prix (2008)



**RESEARCH
TECHNOLOGIES**

INDIANA UNIVERSITY

University Information Technology Services



**PERVASIVE TECHNOLOGY
INSTITUTE**

INDIANA UNIVERSITY

IU – Campuses and Medical School Centers



IU Campuses



IU School of Medicine campuses and clinics



**RESEARCH
TECHNOLOGIES**

INDIANA UNIVERSITY
University Information Technology Services

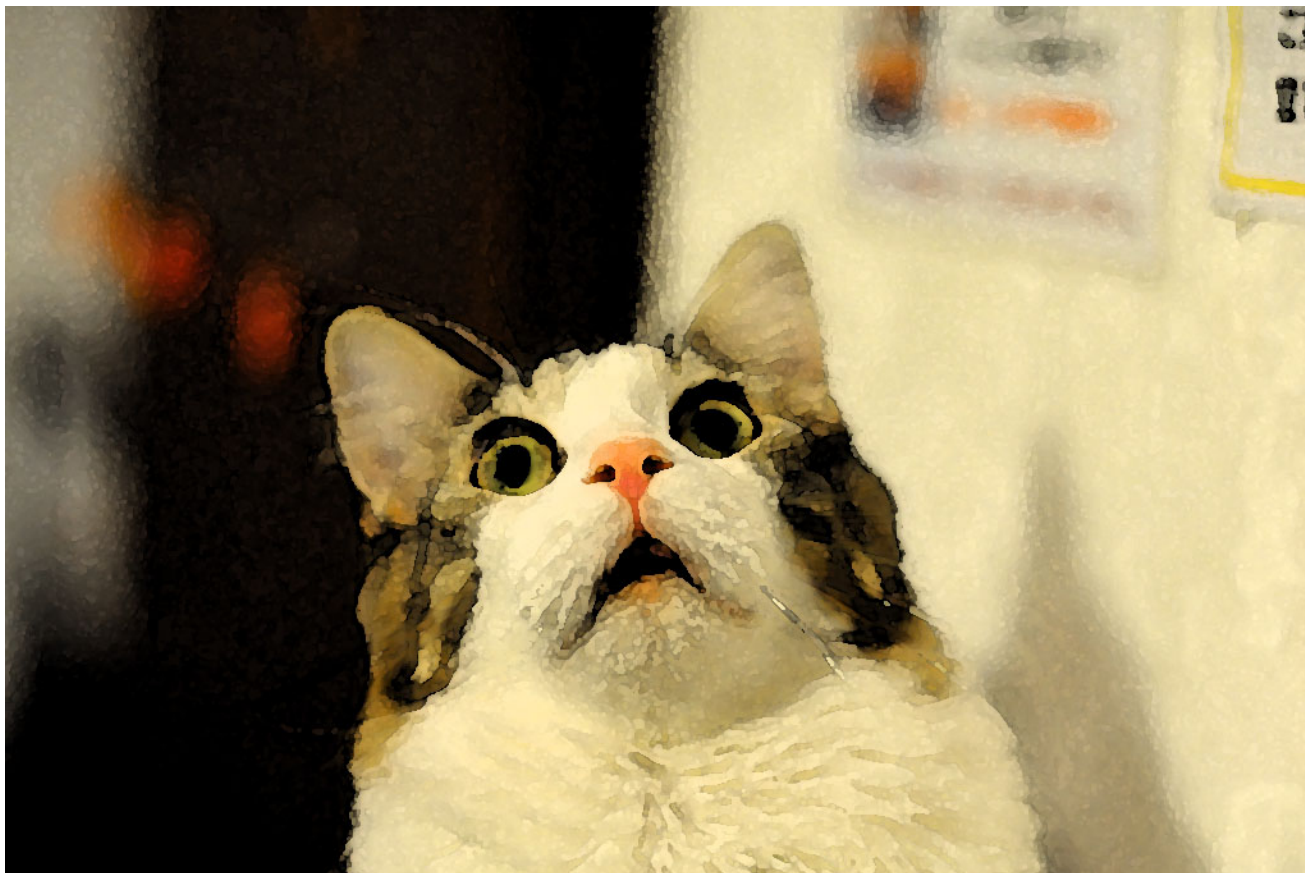


**PERVASIVE TECHNOLOGY
INSTITUTE**

INDIANA UNIVERSITY



University Information Technology Services



Flickr user dat', scared cat is really scared (modified, 2010)



**RESEARCH
TECHNOLOGIES**

INDIANA UNIVERSITY
University Information Technology Services



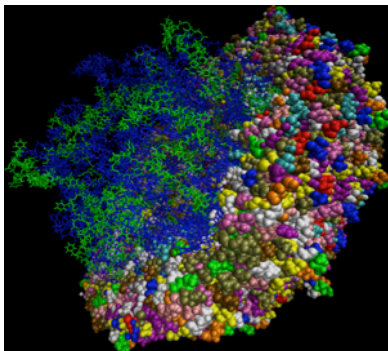
**PERVASIVE TECHNOLOGY
INSTITUTE**

INDIANA UNIVERSITY

RT Services – Computation

Big Red II – IU's main system for high-performance parallel computing

- Owned solely by IU
- 1 PetaFLOPS
- 1020 Nodes
- CPUs/GPUs
- 3.5 PB of scratch (DCII)



- Available to all Faculty, Staff, and Graduate Students



**RESEARCH
TECHNOLOGIES**

INDIANA UNIVERSITY
University Information Technology Services



**PERVASIVE TECHNOLOGY
INSTITUTE**

INDIANA UNIVERSITY

RT Services – Computation

- **Karst** – standard cluster available for expansion
 - General purpose Intel Linux cluster
 - Based on IBM/Lenovo NeXtScale Hardware
 - Started as 256 standard nodes, 16 data-intensive nodes
 - Condo nodes may be purchased for special needs or greater response



- Available to all Faculty, Staff, and Students



RESEARCH
TECHNOLOGIES

INDIANA UNIVERSITY
University Information Technology Services



PERVASIVE TECHNOLOGY
INSTITUTE

INDIANA UNIVERSITY

How much does this cost?

- The computing resources and storage are **free** for normal use
- Short term support and consulting is also **free**
 - Involves help with day to day issues
 - Installing software
 - Troubleshooting problems, etc
- Long-term support and consulting is possible on a paid basis

Flickr user Lori SR, Max & Erma's Evansville (2008)

David Hancock, Sagrada Familia (2009)



RESEARCH
TECHNOLOGIES

INDIANA UNIVERSITY
University Information Technology Services



PERVASIVE TECHNOLOGY
INSTITUTE

INDIANA UNIVERSITY

Condo Computing 2.0 at IU

- Like paying to cut in line (preemption rights)
- We take care of the infrastructure
- Reducing Cyber Risk
- TORQUE & Moab
- Dedicated custom nodes
 - Small admin fee



Flickr user Alexandre Duret-Lutz, Eiffel Tower Queue (2006)



**RESEARCH
TECHNOLOGIES**

INDIANA UNIVERSITY
University Information Technology Services



**PERVASIVE TECHNOLOGY
INSTITUTE**

INDIANA UNIVERSITY

Contact information

Available for further discussions

 [dyhancoc](https://www.linkedin.com/in/dyhancoc)

 [@HPCrooster](https://twitter.com/HPCrooster)

 [david.y.hancock](https://www.facebook.com/david.y.hancock)

 dyhancoc@iu.edu



Flickr user Gary Tanner



**RESEARCH
TECHNOLOGIES**

INDIANA UNIVERSITY
University Information Technology Services



**PERVASIVE TECHNOLOGY
INSTITUTE**

INDIANA UNIVERSITY

Acknowledgements

- Discussions with other partners such as Purdue helped inform our condo strategy
- Big Red II & Karst images by Ralph Zuzolo at IU
- Images used with attribution under creative commons license 2.0 license
 - Flickr users: A.Davey, varlen, dat', Alexandre Duret-Lutz, Lori SR, Gary Tanner
- Sagrada Familia image by David Hancock



**RESEARCH
TECHNOLOGIES**

INDIANA UNIVERSITY
University Information Technology Services



**PERVASIVE TECHNOLOGY
INSTITUTE**

INDIANA UNIVERSITY