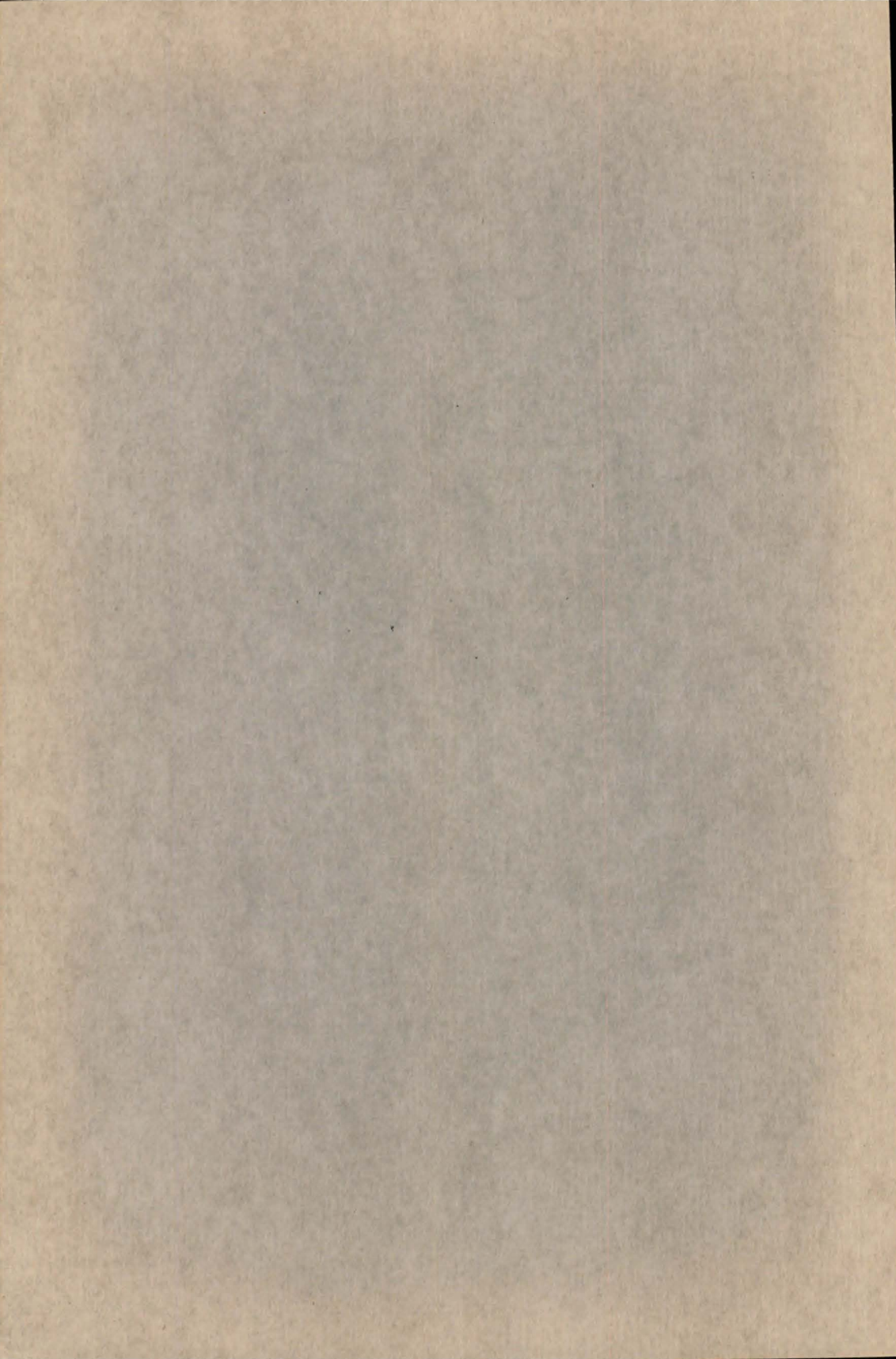


DIRECTORY OF CRUSHED LIMESTONE PRODUCERS
IN INDIANA

by
DUNCAN J. MCGREGOR

Indiana Department of Conservation
GEOLOGICAL SURVEY
Directory No. 4

1956



STATE OF INDIANA
George N. Craig, Governor

DEPARTMENT OF CONSERVATION
Harley G. Hook, Director

GEOLOGICAL SURVEY
Charles F. Deiss, State Geologist
Bloomington

Directory No. 4

DIRECTORY OF CRUSHED LIMESTONE PRODUCERS IN INDIANA

by

Duncan J. McGregor



Printed by authority of the state of Indiana

BLOOMINGTON, INDIANA

October 1956

For sale by Geological Survey, Indiana Department of Conservation, Bloomington, Indiana

Price 25 cents

SCIENTIFIC AND TECHNICAL STAFF OF THE
GEOLOGICAL SURVEY

Charles F. Deiss, State Geologist
John B. Patton, Principal Geologist
Bernice M. Banfill, Administrative Assistant to the State Geologist
Mary Beth Fox, Mineral Statistician

Coal Section

Charles E. Wier, Geologist and Head
G. K. Guennel, Paleobotanist
S. A. Friedman, Geologist
Henry H. Gray, Geologist
Harold C. Hutchison, Geologist
Richard L. Powell, Geologic Assistant

Geochemistry Section

R. K. Leininger, Spectrographer and Head
Maynard E. Coller, Analytical Chemist
Louis V. Miller, Coal Chemist
Robert F. Conley, Spectrographer
E. M. Craig, Laboratory Technician

Geophysics Section

Maurice E. Biggs, Geophysicist and Head
Judson Mead, Research Advisor
Robert F. Blakely, Geophysicist
Charles S. Miller, Instrument Maker
Joseph F. Whaley, Geophysicist
Raymond Robinson, Driller
Thomas L. Roberts, Driller's Assistant
Arthur Wayne Aynes, Geophysics Technician

Glacial Geology Section

William J. Wayne, Geologist and Head
William D. Thornbury, Research Advisor
Philip W. Harrison, Geologist

SCIENTIFIC AND TECHNICAL STAFF OF THE
GEOLOGICAL SURVEY

3

Industrial Minerals Section

Duncan J. McGregor, Geologist and Head
Wayne M. Bundy, Petrographer
Seymour S. Greenberg, Petrographer
Haydn H. Murray, Clay Mineralogist
John M. Smith, Geologist
Ned M. Smith, Geologist
Jack A. Sunderman, Geologist
Ross Hickam, Preparator

Paleontology Section

Robert H. Shaver, Paleontologist and Head

Petroleum Section

T. A. Dawson, Geologist and Head
G. L. Carpenter, Geologist
Allan M. Gutstadt, Geologist
Olin R. Holt, Geologist
Andrew J. Hreha, Geologist
Stanley Keller, Geologist
Arthur P. Pinsak, Geologist
Reevan D. Rarick, Geologist
Howard Smith, Geologist
Dan M. Sullivan, Geologist
George Abbott, Draftsman
Phillip W. Cazee, Assistant Sample Curator

Publications Section

Gerald S. Woodard, Editor
William H. Moran, Chief Draftsman
Robert E. Judah, Draftsman
Mickey P. Love, Draftsman
John E. Peace, Draftsman
George R. Ringer, Photographer

	Page
Introduction - - - - -	9
The crushed stone industry - - - - -	9
General statement - - - - -	9
Production of crushed limestone - - - - -	10
Uses of crushed limestone - - - - -	10
Economics of crushed limestone - - - - -	12
Distribution and stratigraphy - - - - -	13
Producers of crushed limestone - - - - -	20
Producers of crushed limestone listed by counties - - - -	50
Adams County - - - - -	50
Allen County - - - - -	50
Bartholomew County - - - - -	50
Blackford County - - - - -	50
Carroll County - - - - -	50
Cass County - - - - -	50
Clark County - - - - -	50
Crawford County - - - - -	51
Decatur County - - - - -	51
Delaware County - - - - -	51
Grant County - - - - -	51
Greene County - - - - -	51
Hamilton County - - - - -	51

CONTENTS

	Page
Harrison County - - - - -	51
Howard County - - - - -	51
Huntington County - - - - -	52
Jasper County - - - - -	52
Jay County - - - - -	52
Jennings County - - - - -	52
Lawrence County - - - - -	52
Madison County - - - - -	52
Monroe County - - - - -	52
Morgan County - - - - -	52
Newton County - - - - -	53
Orange County - - - - -	53
Owen County - - - - -	53
Parke County - - - - -	53
Perry County - - - - -	53
Pulaski County - - - - -	53
Putnam County - - - - -	53
Randolph County - - - - -	54
Ripley County - - - - -	54
Rush County - - - - -	54
Scott County - - - - -	54
Shelby County - - - - -	54

CONTENTS

	Page
Sullivan County - - - - -	54
Switzerland County - - - - -	54
Warrick County - - - - -	54
Washington County - - - - -	55
Wayne County - - - - -	55
Wells County - - - - -	55
White County - - - - -	55
Literature cited - - - - -	56

ILLUSTRATIONS

7

Plate 1. Map of Indiana showing crushed limestone operations - - - - - In pocket

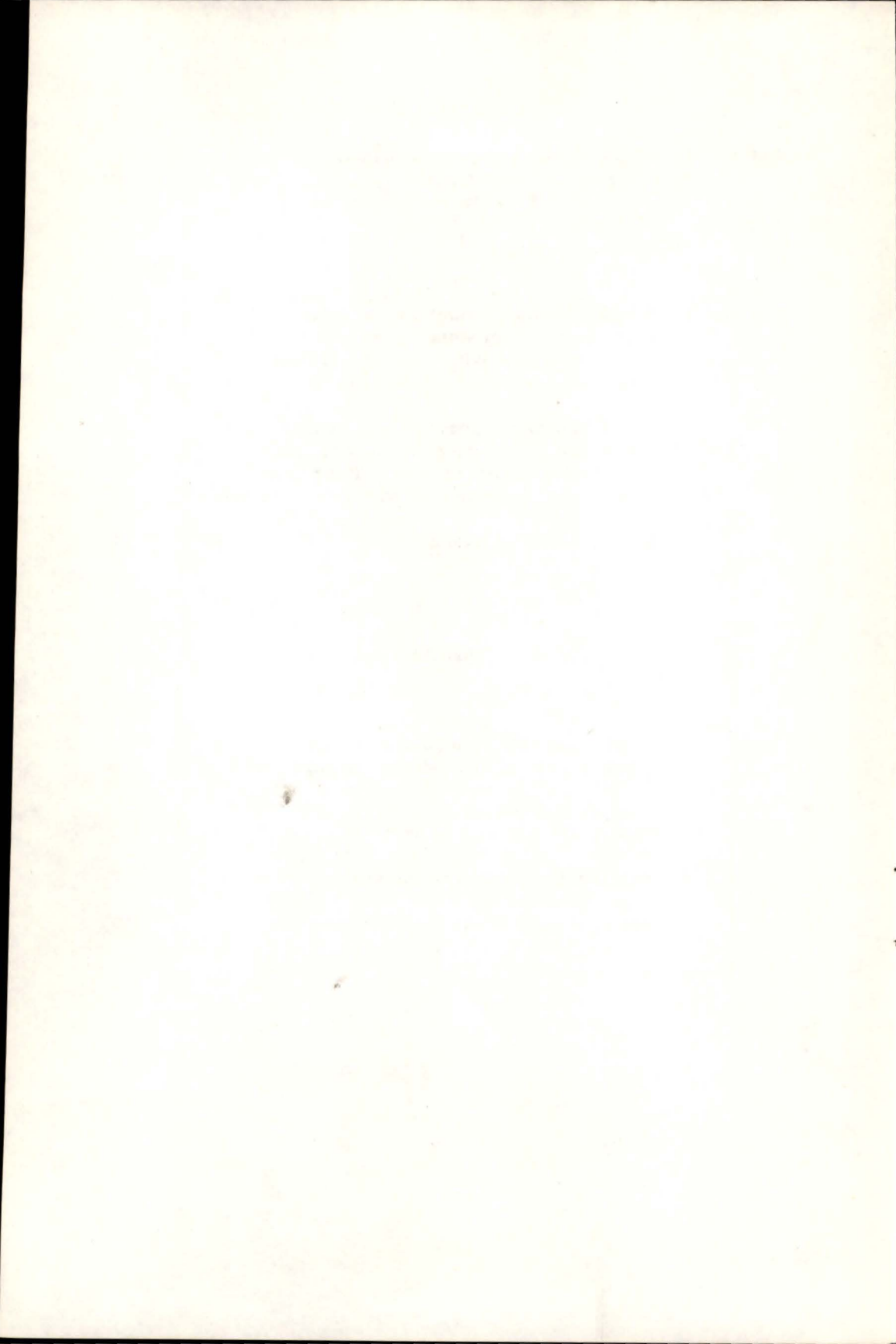
Page

Figure	1. Graph showing production and value of crushed limestone, exclusive of that used in making cement and lime, quarried in Indiana from 1940 to 1953 - -	11
	2. Graph showing production and value of crushed limestone according to use, exclusive of that used in making cement and lime, quarried in Indiana in 1953 - - -	12
	3. Geologic map of Indiana - - - - -	14

TABLES

Page

Table	1. Ordovician, Silurian, and Devonian rocks in southern Indiana, in part - - - -	15
	2. Silurian and Devonian rocks in northern Indiana, in part - - - - -	16
	3. Mississippian rocks in Indiana - - - - -	17
	4. Pennsylvanian rocks in Indiana, in part - -	19



DIRECTORY OF CRUSHED LIMESTONE PRODUCERS IN INDIANA

By Duncan J. McGregor

INTRODUCTION

This directory is a revision of the section on "Limestone--agricultural and crushed" in Directory No. 1, Directory of producers of mineral raw materials, exclusive of oil and gas, in Indiana (Callaghan and Ecker, 1948). In Directory No. 1, 33 operations which are no longer active were listed, and 31 currently active operators were not listed. This directory was prepared to aid producers and consumers in evaluating crushed limestone operations.

All quarries were visited within the past 2 years by members of the Industrial Minerals Section, Indiana Geological Survey. Much of the data used in this directory resulted from these visits. Data sheets containing pertinent information about each operation were sent to all crushed limestone producers for additions and corrections. The author expresses his appreciation to all producers who checked the data sheets and returned information about their respective operations. Plate 1 shows crushed limestone operations in Indiana.

THE CRUSHED STONE INDUSTRY

GENERAL STATEMENT

History reveals that rock in relatively large sizes was used as a building material in ancient times. Only in the past 200 years, however, has crushed stone in small sizes been used for construction purposes. The convict slave gangs who used hand sledges to reduce large rocks to smaller sizes might well be the forerunners of our modern crushed stone industry.

According to McGrew (1950, p. 118), the earliest patent on a crushing machine in the United States was issued in 1830. Little use was made of these early designs, however, and none of these crushing machines were capable of doing the job required. In 1858 Eli Whitney Blake invented the first successful mechanical rock crusher. McGrew says (p. 118): "Blake adopted a mechanical principle familiar to all students of mechanics, the powerful toggle linkage. That his idea was good is attested to by the fact that the Blake-type jaw crusher is today the standard by which all jaw crushers are judged, and [is] the leading machine of the class for heavy-duty primary crushing service."

Between 1860 and 1878 the gyratory principle of crushing rock

was the basis for patents on several rudimentary designs for crushing machines. None of these designs, however, embodied practical mechanical details. McGrew states (p. 118) that in 1881 Philetus W. Gates was granted a patent on a machine which included in its design all essential features of the modern gyratory crusher.

As a result of these inventions and others, such as secondary crushers, power shovels, and trucks, and the development of drilling and blasting techniques, rock can be quarried and crushed rapidly to various sizes and made readily available. The development of new markets for crushed stone has contributed to the rapid growth of the crushed stone industry.

PRODUCTION OF CRUSHED LIMESTONE

Crushed limestone produced in Indiana during 1953 amounted to 8,200,831 short tons and was valued at \$10,616,484 (unpublished information, U. S. Bureau of Mines). Figure 1 shows the production and value of crushed limestone in Indiana from 1940 through 1953. The year 1953 is the latest for which accurate figures are available.

Figure 1 shows that the production of crushed limestone generally increased up to 1953. The decline in production between 1942 and 1945 and in 1947 resulted in part from the decrease in the amount of concrete and road construction undertaken in those years. The decline in production in 1953, however, is due to the decrease in the sale of agricultural limestone more than to a decrease in concrete and road construction.

USES OF CRUSHED LIMESTONE

Crushed limestone is used principally in Indiana for concrete aggregate, road metal, and agricultural limestone. It also is used for fluxstone in smelting, as railroad ballast and riprap, and in making cement, lime, and mineral wool. Figure 2 shows the production and value of crushed limestone, according to use, in Indiana in 1953.

Stone sold for road metal or concrete aggregate to companies, individuals, and county or township road departments may not have to meet any engineering specifications, whereas stone sold as concrete aggregate or road metal to state highway departments for any work supported by the Federal Public Roads Administration must meet specifications. In Indiana the State Highway Commission in its manual, Standard specifications for road and bridge construction and maintenance, published in 1952, gives these specifications.

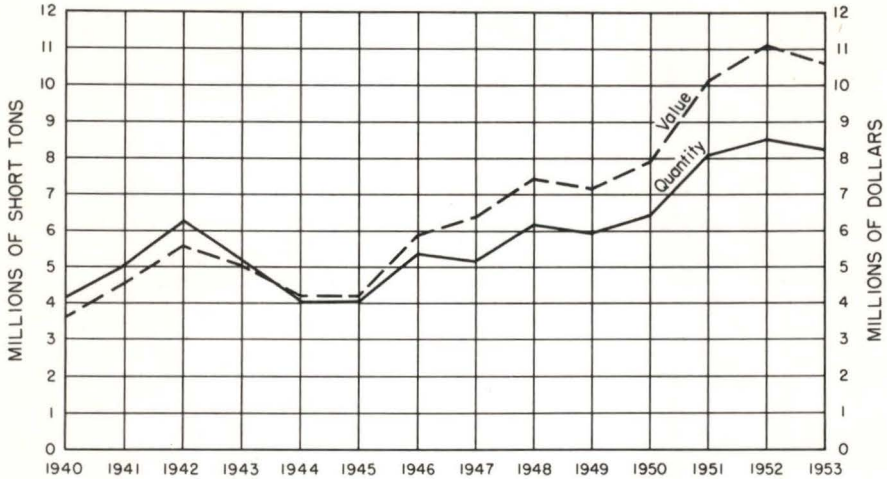


Figure 1. Graph showing production and value of crushed limestone, exclusive of that used in making cement and lime, quarried in Indiana from 1940 to 1953, (Data from U. S. Bureau of Mines, Minerals Yearbooks, 1940-52, and U. S. Bureau of Mines, 1953.)

Most of these specifications are based on empirical tests and are not expressed in geologic terms.

In Indiana the requirements for agricultural limestone eligible for federal subsidy are: (1) the product must have a "calcium carbonate equivalent" of at least 80 percent, (2) 80 percent of the material must pass an 8-mesh (.0931 inches) sieve, and (3) the product of the "calcium carbonate equivalent" and the amount passing the 8-mesh sieve must be at least 7200. This figure is commonly referred to as the neutralizing power.

The term "calcium carbonate equivalent" recognizes the fact that dolomite (CaMgCO_3) has more available CO_2 than calcite (CaCO_3). The "calcium carbonate equivalent" is calculated by adding the percentage of calcium carbonate content to the product of the percentage of magnesium carbonate content multiplied by the factor 1.19. This is expressed in formula as:

$$\text{CaCO}_3 \text{ equivalent} = \% \text{CaCO}_3 + 1.19 (\text{MgCO}_3).$$

The calcium carbonate equivalent can be more than 100 and is expressed as a percentage.

High-calcium limestones are those which contain 95 percent or more calcium carbonate. Specifications for each industrial use govern the amount and kind of impurities that can be tolerated.

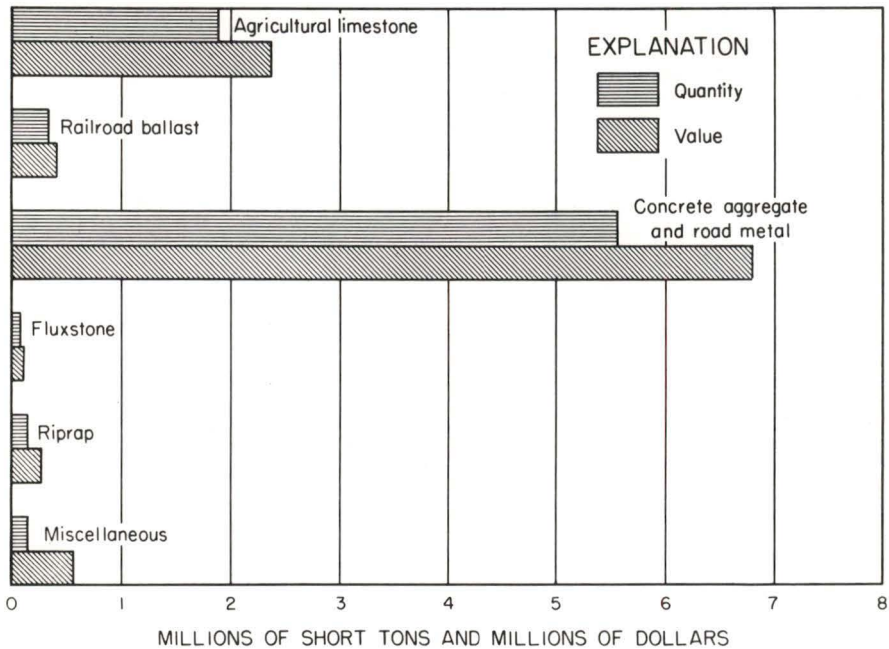


Figure 2. Graph showing production and value of crushed limestone according to use, exclusive of that used in making cement and lime, quarried in Indiana in 1953. (Data from U. S. Bureau of Mines, 1953.)

ECONOMICS OF CRUSHED LIMESTONE

As crushed limestone is a low-priced commodity and cannot absorb high transportation costs, sales are restricted geographically. The average price of crushed limestone at the quarry in the United States is \$1.38 per ton (Gutschick, 1955, p. 120).

Before exploiting a deposit for crushed limestone, one should consider: (1) the extent of the geologic formation to be quarried and its relationship to thickness, overburden, and tonnage, (2) the cost of quarrying and transportation, (3) current production in the area, (4) the potential market and its extent, and (5) the physical and chemical properties of each geologic formation. One should realize that the eventual utilization of a deposit probably is more dependent upon economic than upon technical factors. The trend of the crushed limestone industry in Indiana is toward a smaller number of quarries which are better equipped and which have a considerably larger productive capacity.

DISTRIBUTION AND STRATIGRAPHY

The distribution of various rock systems within Indiana is shown in figure 3. Stripping and quarrying can be done economically in the unglaciated area of south-central Indiana and in those areas covered by Illinoian glacial drift in which the bedrock is relatively close to the surface. Quarries also can be opened without excessive stripping in the area between the Wisconsin drift border and the edge of the Champaign moraine system, wherein major streams and their tributaries have cut through the glacial drift into bedrock. Quarries in Parke, Putnam, Bartholomew, Shelby, Decatur, Rush, and Wayne Counties lie within this area.

In much of southern Indiana, as noted by Patton (1949, p. 2), "potential quarry sites are numerous, and the quarry operator may select a location upon the basis of convenience, geographic advantage, stripping conditions, and character of the limestone."

In the area north of the Champaign moraine system, the glacial drift is thin only in the valleys of large streams and their tributaries and at a few places in the outwash and till plains. Thus an operator quarries limestones and dolomite where they can be produced economically and has little opportunity to select a new quarry site from a wide choice of possible locations.

Commercial amounts of limestone and dolomites, and therefore quarry sites, are absent in three broad belts in Indiana. They are (1) the upper two tiers of counties across northern Indiana, (2) the area directly underlain by New Albany shale and rocks of the Borden group extending from Louisville, Ky., slightly northwestward across central Indiana, and (3) the area of Pennsylvanian outcrop along the central and southwestern parts of the state. In addition, the Ordovician rocks that crop out in the southeast corner of the state are thin-bedded limestones separated by shales and, therefore, are not likely to yield many desirable quarry sites.

Crushed limestone in Indiana is produced from Ordovician, Silurian, Devonian, Mississippian, and Pennsylvanian rocks. Tables 1, 2, 3, and 4 show the formations from which crushed limestone is produced, their geologic age, and associated rock strata.

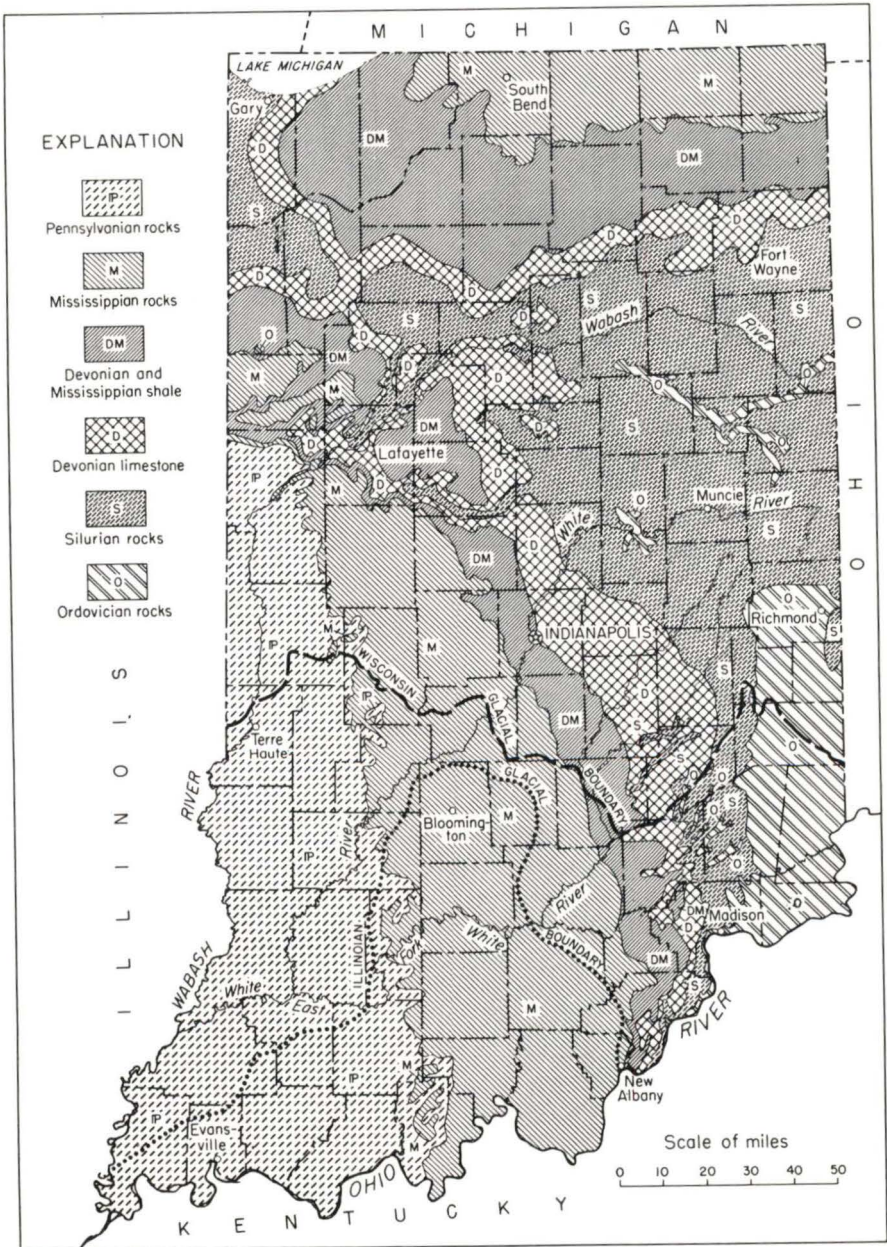


Figure 3. Geologic map of Indiana. From Patton, 1955, figure 1.

Table 1.--Ordovician, Silurian, and Devonian rocks in southern Indiana, in part

SYSTEM	SERIES		CORRELATIVE UNIT	MEMBER, FORMATION, GROUP	
DEVONIAN	Upper			Blocher shale member 2-20 ft.	New Albany shale (lower part)
		Middle	Erian	Hamilton	Beechwood limestone member 0-10 ft.
	Speed and Silver Creek limestone members 0-26 ft.				
	Ulsterian	Onondaga	Jeffersonville limestone 26-46 ft.		
			Geneva dolomite 0-35 ft.		
Louisville limestone 0-52 ft.					
SILURIAN	Niagaran	Clinton	Waldron shale 0-15 ft.		
			Laurel limestone 27-55 ft.		
			Osgood formation 10-30 ft.		
			Brassfield limestone 0-12 ft.		
	Albion	Medina			
ORDOVICIAN	Cincinnatian		Elkhorn formation 0-50 ft.	Richmond group	
			Whitewater formation 0-80 ft.		
			Saluda limestone 6-50 ft.		
			Liberty formation 50 ft.		

Table 2.--Silurian and Devonian rocks in northern Indiana, in part¹

SYSTEM	SERIES		CORRELATIVE UNIT	FORMATION
DEVONIAN	Up- per			New Albany shale (lower part)
	Middle	Erian	Hamilton	Sellersburg (North Vernon) limestone 10-15 ft.
		Ulsterian	Onondaga	Jeffersonville limestone 60-90 ft. Pendleton sandstone 0-15 ft.
	?	?	?	Kenneth limestone 30-40 ft.
	SILURIAN		Cayugan	
Niagaran				Huntington dolomite 90-150 ft.
				Liston Creek limestone 50-72 ft.
				Mississinewa shale 90-120 ft.

¹ The ascending sequence Mississinewa-Liston Creek-Huntington follows the usage of Cumings and Shrock (1928, p. 53), but it is probable that dolomite beds which have been called Huntington are present throughout the Niagaran section at various places in northern Indiana (Patton, 1949, p. 12-13).

Table 3.--Mississippian rocks in Indiana

SYSTEM	SERIES	CORRELATIVE UNIT	MEMBER, FORMATION, GROUP
MISSISSIPPIAN	CHESTER	Upper Chester	Kinkaid limestone 20-35 ft.
			Degonia sandstone 10-35 ft.
			Clore limestone 10-35 ft.
			Palestine sandstone 5-40 ft.
			Menard limestone 25-50 ft.
			Waltersburg sandstone 30-60 ft.
			Vienna limestone 5-15 ft.
		Middle Chester	Tar Springs sandstone 40-90 ft.
			Glen Dean limestone 27-60 ft.
			Hardinsburg sandstone 25-45 ft.
			Golconda limestone 40-50 ft.
		Lower Chester	Cypress sandstone 25-40 ft.
			Beech Creek limestone 8-30 ft.
			Elwren sandstone 20-50 ft.
			Reelsville limestone 0-10 ft.
			Sample sandstone 16-35 ft.
			Beaver Bend limestone 1-20 ft.
			Mooretown sandstone 5-30 ft.
Paoli limestone 0-38 ft.			
Aux Vases formation 0-12 ft.			

Table 3.--Mississippian rocks in Indiana--Continued

SYSTEM	SERIES	CORRELATIVE UNIT	MEMBER, FORMATION, GROUP	
MISSISSIPPIAN	MERAMEC		Levias limestone member 25-60 ft.	Ste. Genevieve limestone 70-170 ft.
			Rosiclare limestone member 1-40 ft.	
			Fredonia limestone member 30-115 ft.	
			St. Louis limestone 90-300 ft.	
			Salem limestone 20-80 ft.	
			Upper Harrodsburg limestone member 34-44 ft.	Harrodsburg limestone 60-80 ft.
	Lower Harrodsburg limestone member 30-44 ft.			
	OSAGE		Edwardsville formation 40-200 ft.	Borden group 465-770 ft.
			Floyds Knob limestone 0-15 ft.	
			Carwood formation 115-125 ft.	
			Locust Point formation 120-140 ft.	
			New Providence shale 190-290 ft.	
	Rockford limestone 0-3 ft.			
KINDER-HOOK		New Albany shale (upper part)		

Table 4.--*Pennsylvanian rocks in Indiana, in part*

SYSTEM	SERIES		MEMBER	FORMATION
	MID-CONTINENT	APPALACHIAN		
PENNSYLVANIAN	MISSOURI	CONEMAUGH	Murphy's Bluff sandstone	Shelburn formation 210-300 ft.
			Vigo limestone	
			Maria Creek limestone	
	Busseron sandstone			
	DES MOINES	ALLEGHENY	Coal VII	Dugger formation 90-120 ft.
			Universal limestone	
			Coal VI	
			Alum Cave limestone	Petersburg formation 90-120 ft.
			Coal V (Petersburg)	
			Coal IVa	
			Coal IV (Linton)	Linton formation 40-60 ft.
			Coal IIIa	
			Coal III (Seelyville)	
	ATOKA	POTTSVILLE	Coal II (Silverwood)	Brazil formation 75-90 ft.
			Minshall limestone	
			Minshall coal	
			Upper Block coal	
Lower Block coal				
MORROW			Mansfield formation 50-300 ft.	

PRODUCERS OF CRUSHED LIMESTONE

1. T. J. Atkins and Company, Inc.

R. R. 3, Jeffersonville

Phone 3-7633

Plant and quarry location: Clark County, 1 mile northeast of
Claysburg, W1/4 Grant 10, Clark Military Grant

Plant manager: Louis Rogier

Employees: 22

Products: crushed limestone and agricultural limestone

Daily capacity: 1,500 tons

Shipping facilities: truck

Geologic formations:

Soil and glacial drift	16.7 ft.
Sellersburg limestone	25.1 ft.
Jeffersonville limestone	28.5 ft.

2. W. C. Babcock Construction Company, Inc.

P. O. Box 237, Rensselaer

Phones 463 and 162

Plant and quarry location: Jasper County, southeast edge of
Rensselaer, SE1/4SE1/4 sec. 30, T. 29 N., R. 6 W.

President: W. C. Babcock

Plant manager: Elmer Evers

Employees: 10

Products: crushed limestone and agricultural limestone

Daily capacity: 800 tons

Shipping facilities: truck

Geologic formations:

Soil and glacial drift	8.0 ft.
Jeffersonville limestone	1.9 ft.
Kokomo limestone	26.6 ft.

3. Bedford Ground Limestone Company

P. O. Box 112, Bedford

Phone 3622

Plant and quarry location: Lawrence County, Garvey Lane, north-
west Bedford

Owner and plant manager: John R. Miller

Products: industrial limestone, chemical limestone, and
agricultural limestone

Shipping facilities: truck and rail

3. Bedford Ground Limestone Company--Continued

Geologic formation:

Salem limestone spalls

4. Bloomington Crushed Stone Company

Oard Road, Bloomington

Phone 3411

Plant and quarry location: Monroe County, 4 miles west of
Bloomington, NE1/4SW1/4 sec. 27, T. 9 N., R. 2 W.

Plant manager: Gus Sieboldt

Employees: 20

Products: crushed limestone and agricultural limestone

Daily capacity: 2,500 tons

Shipping facilities: truck

Geologic formations:

Soil	4.0 ft.
Mooretown sandstone	11.6 ft.
Paoli limestone	13.6 ft.
Aux Vases formation	4.1 ft.
Ste. Genevieve limestone	51.6 ft.

5. Calcar Quarries

Paoli

Phone 4401

Plant and quarry location: Orange County, 1 mile southeast of Paoli
SE1/4SE1/4 sec. 6, T. 1 N., R. 1 E.

Owners: Mrs. Glenn Meadows and Mr. Jerry Meadows

Plant manager: John Manship

Employees: 12

Products: crushed limestone and agricultural limestone

Daily capacity: 800 tons

Shipping facilities: truck

Geologic formations:

Soil	5.0 ft.
Beaver Bend limestone	1.5 ft.
Mooretown sandstone	13.4 ft.
Paoli limestone	30.2 ft.
Aux Vases formation	4.3 ft.
Ste. Genevieve limestone	67.1 ft.

22 **DIRECTORY OF CRUSHED LIMESTONE PRODUCERS**

6. Cass County Stone Company

640 Burlington Avenue, Logansport
Phone 5-6358

Plant and quarry location: Cass County, 2.5 miles west of
Logansport, NW1/4SE1/4 sec. 28, T. 27 N., R. 1 E.

Owner: C. A. Studebaker

Employees: 7

Products: crushed limestone

Daily capacity: 1,000 tons

Shipping facilities: truck

Geologic formations:

Soil and glacial drift	6.0 ft.
Kenneth limestone	32.0 ft.
Kokomo limestone	43.9 ft.

7. Cave Stone Company

French Lick
Phone 126

Plant and quarry location: Orange County, 3.5 miles northwest of
Paoli, NW1/4SE1/4 sec. 29, T. 2 N., R. 1 W.

Owner: William M. Cave

Plant manager: C. S. Cave

Employees: 12

Products: agricultural limestone and crushed limestone

Daily capacity: 600 tons

Shipping facilities: truck

Geologic formations:

Soil	6.5 ft.
Paoli limestone	17.7 ft.
Aux Vases formation	2.4 ft.
Ste. Genevieve limestone	51.3 ft.

8. Cave Stone Company, Inc.

R. R. 1, Flat Rock
Phone Cave 3-C

Plant and quarry location: Shelby County, west edge of Norristown
NE1/4NW1/4 sec. 32, T. 11 N., R. 7 E.

President: Frank Cortelyou

Plant manager: Walter Van Gorden

Employees: 8

Products: crushed limestone, agricultural limestone, and flagstone

Daily capacity: 700 tons

Shipping facilities: truck

8. Cave Stone Company, Inc. --Continued

Geologic formations:

Soil and glacial drift	13.0 ft.
Jeffersonville limestone	20.5 ft.
Geneva dolomite	18.0 ft.

9. Cloverdale Stone Company

Cloverdale

Plant and quarry location: Putnam County, 1.5 miles northeast of Cloverdale, NW1/4NE1/4 sec. 32, T. 13 N., R. 3 W.

Owners and plant managers: J. R. Reed, A. C. Reed, O. E. Reed, and Billy Brown

Employees: 4

Products: crushed limestone and agricultural limestone

Daily capacity: 400 tons

Shipping facilities: truck

Geologic formations:

Soil and glacial drift	8.0 ft.
Ste. Genevieve limestone	31.7 ft.

10. Cord Stone Company

Versailles

Phone 4345

Plant and quarry location: Ripley County, 2.8 miles southwest of Versailles, SE1/4NW1/4 sec. 26, T. 7 N., R. 11 E.

Owner and plant manager: Karl J. Cord

Employees: 8

Products: crushed limestone, agricultural limestone, and stone for ready mix concrete

Daily capacity: 300 tons

Shipping facilities: truck

Geologic formations:

Soil and glacial drift	6.0 ft.
Laurel limestone	28.8 ft.

11. Corydon Stone Company

Corydon

Phone 8-1215

Plant and quarry location: Harrison County, northwest edge of Corydon, SE1/4SE1/4 sec. 25, T. 3 S., R. 3 E.

Owner and plant manager: Joseph H. Bachman

24 DIRECTORY OF CRUSHED LIMESTONE PRODUCERS

11. Corydon Stone Company--Continued

Employees: 13

Products: crushed stone and agricultural limestone

Daily capacity: 800 tons

Shipping facilities: truck

Geologic formations:

Soil	2.5 ft.
Ste. Genevieve limestone	1.5 ft.
St. Louis limestone	60.0 ft.

12. Cumberland Quarries, Inc.

410 Illinois Building, Indianapolis

Plant and quarry location: Parke County, southeast of Wallace
SW1/4NE1/4 sec. 5, T. 17 N., R. 6 W.

President: N. E. Kelb

Plant managers: H. L. Bushman, General Manager
Charles Cunningham, Superintendent

Employees: 8

Products: crushed limestone and agricultural limestone

Daily capacity: 500 tons

Shipping facilities: truck

Geologic formations:

Soil and glacial drift	12.5 ft.
Mansfield formation	12.5 ft.
St. Louis limestone	2.0 ft.
Salem limestone	4.6 ft.
Harrodsburg limestone	31.7 ft.

13. Davis Crushed Stone and Lime Company

Ramsey

Phones 2160 and 2165

Plant and quarry location: Harrison County, 1 mile northwest of
Ramsey, SE1/4SW1/4 sec. 15, T. 2 S., R. 3 E.

Owner and plant manager: John S. Davis

Employees: 5

Products: crushed limestone and agricultural limestone

Daily capacity: 350 tons

Shipping facilities: truck

Geologic formations:

Soil	8.5 ft.
Paoli limestone	12.3 ft.
Aux Vases formation	1.0 ft.
Ste. Genevieve limestone	33.0 ft.

14. DeBolt Concrete Company

P. O. Box 208, Richmond

Phone 25779

Plant and quarry location: Wayne County, 3 miles southeast of
Richmond, NE1/4SW1/4 sec. 11, T. 13 N., R. 1 W.

President: G. G. DeBolt

Plant manager: Glen Mathews

Employees: 11

Products: crushed limestone, agricultural limestone, and flagstone

Daily capacity: 2,000 tons

Shipping facilities: truck

Geologic formations:

Soil and glacial drift	2.5 ft.
Elkhorn formation	15.2 ft.

15. Dunn Limestone Company, Inc.

Spencer

Phone 393

Plant and quarry location: Owen County, 3.5 miles northeast of
Spencer, NE1/4SW1/4 sec. 10, T. 10 N., R. 3 W.

President: F. A. Dunn

Employees: 22

Products: crushed limestone, agricultural limestone, and fluxstone

Daily capacity: 1,000 to 1,200 tons

Shipping facilities: rail and truck

Geologic formations:

Soil and glacial drift	11.6 ft.
St. Louis limestone	18.9 ft.
Salem limestone	39.8 ft.

16. Eaton Stone, Inc.

P. O. Box 35, Eaton

Phone 3231

Plant and quarry location: Delaware County, west edge of Eaton
NE1/4SW1/4 sec. 23, T. 22 N., R. 10 E.

President: John M. McDonald, Jr.

Plant manager: Joe Peck

Employees: 10

Products: crushed limestone

Daily capacity: 3,500 tons

Shipping facilities: truck

Geologic formations:

Soil and glacial drift	3.5 ft.
Liston Creek limestone	29.1 ft.

26 DIRECTORY OF CRUSHED LIMESTONE PRODUCERS

17. The Erie Stone Company

Bluffton
Phone 658

Plant and quarry location: Wells County, 1.5 miles north of
Bluffton, SE1/4NW1/4 sec. 28, T. 27 N., R. 12 E.

Owner: The France Stone Company, Toledo 4, Ohio

Plant manager: F. M. Paxson

Employees: 14

Products: crushed limestone, agricultural limestone, and fluxstone

Daily capacity: 1,150 tons

Shipping facilities: truck and rail

Geologic formations:

Soil and glacial drift	12.0 ft.
Liston Creek limestone	32.6 ft.

18. The Erie Stone Company

Huntington
Phone 431

Plant and quarry location: Huntington County, east edge of
Huntington, SW1/4SE1/4 sec. 12, T. 28 N., R. 9 E.

Owner: The France Stone Company, Toledo 4, Ohio

Plant manager: A. C. Nickelsen

Employees: 24

Products: crushed limestone, agricultural limestone, ballast,
fluxstone, and mineral wool

Daily capacity: 1,335 tons

Shipping facilities: truck and rail

Geologic formations:

Soil and glacial drift	3.0 ft.
Liston Creek limestone	44.3 ft.

19. The France Stone Company

P. O. Box 152, Logansport
Phone 3047

Plant and quarry location: Cass County, 2.5 miles east of
Logansport, NE1/4 sec. 27, T. 27 N., R. 2 E.

Owner: The France Stone Company, Toledo 4, Ohio

Plant manager: G. D. Raver

Employees: 31

Products: crushed limestone, agricultural limestone, ballast, and
fluxstone

Daily capacity: 1,475 tons

Shipping facilities: truck and rail

19. The France Stone Company--Continued

Geologic formations:

Soil and glacial drift	15.0 ft.
Jeffersonville limestone	15.7 ft.
Kokomo limestone	31.5 ft.

20. Francesville Stone Company

R. R. 1, Francesville

Phone 51F2

Plant and quarry location: Pulaski County, 2 miles south of
Francesville, NE1/4SW1/4 sec. 16, T. 29 N., R. 4 W.

President and plant manager: R. E. Ward

Employees: 17

Products: crushed limestone and agricultural limestone

Daily capacity: 2,500 tons

Shipping facilities: rail and truck

Geologic formations:

Soil and glacial drift	3.0 ft.
Huntington dolomite	37.6 ft.

21. Paul Frank Quarry, Inc.

North Vernon

Plant and quarry location: Ripley County, 2 miles south of
Versailles, SW1/4SE1/4 sec. 23, T. 7 N., R. 11 E.

Owner: Paul Frank

Plant manager: Lloyd Anderson

Employees: 12

Products: agricultural limestone and crushed limestone

Daily capacity: 1,500 tons

Shipping facilities: truck

Geologic formations:

Soil and glacial drift	9.0 ft.
Laurel limestone	22.9 ft.

22. Paul Frank Quarry

North Vernon

Plant and quarry location: Jennings County, northeast edge of
North Vernon, NE1/4 sec. 34, T. 7 N., R. 8 E.

Owner and plant manager: Paul Frank

Products: crushed limestone and agricultural limestone

Employees: 40

28 DIRECTORY OF CRUSHED LIMESTONE PRODUCERS

22. Paul Frank Quarry--Continued

Daily capacity: 1,800 tons

Shipping facilities: truck and rail

Geologic formations:

Soil and glacial drift	18.0 ft.
New Albany shale	39.0 ft.
Sellersburg limestone	6.6 ft.
Jeffersonville limestone	27.6 ft.
Geneva dolomite	11.9 ft.

23. Gorden and Shepard Quarry

R. R. 2, Jasonville

Plant and quarry location: Greene County, 4 miles southeast of
Freedom, NW1/4NE1/4 sec. 6, T. 8 N., R. 4 W.

Owners: Gorden and Shepard

Plant manager: Wayne Shepard

Employees: 2

Products: agricultural limestone, crushed limestone, and riprap

Daily capacity: 100 tons

Shipping facilities: truck

Geologic formations:

Soil and glacial drift	5.6 ft.
Beech Creek limestone	18.5 ft.

24. H and R Stone Company

P. O. Box 203, Ridgeville

Phone 3841

Plant and quarry location: Randolph County, 0.5 mile southeast
of Ridgeville, SE1/4NE1/4SE1/4 sec. 12, T. 21 N., R. 13 E.

Owner and plant manager: Samuel F. Henry

Foreman: Omer Elliott

Employees: 8

Products: crushed limestone and agricultural limestone

Daily capacity: 700 to 800 tons

Shipping facilities: truck

Geologic formations:

Soil and glacial drift	10.0 ft.
Huntington dolomite	38.0 ft.

25. Harris City Stone Company
Harris City
Plant and quarry location: Decatur County, 0.5 mile north of
Harris City, NE1/4SW1/4 sec. 28, T. 10 N., R. 9 E.
Owner: R. L. Roper
Plant manager: Oliver Tichenor
Employees: 8
Products: crushed limestone
Daily capacity: 800 tons
Shipping facilities: truck
Geologic formations:
Soil and glacial drift 12.4 ft.
Laurel limestone 27.9 ft.
26. Heller Stone Company
R. R. 1, Bluffton
Phones Markle 106-7R and Liberty Center 13-50
Plant and quarry location: Wells County, east edge of Rockford
NW1/4SE1/4 sec. 29, T. 27 N., R. 11 E.
Owner and plant manager: G. M. Heller
Employees: 9 or 10
Products: crushed limestone, agricultural limestone, and flagstone
Daily capacity: 600 to 650 tons
Shipping facilities: truck
Geologic formations:
Soil and glacial drift 3.0 ft.
Liston Creek limestone 120.0 ft.
(stratigraphic thickness)
27. Heltonville Agstone Company
Heltonville
Plant and quarry location: Lawrence County, 1 mile northeast of
Heltonville, NW1/4 sec. 24, T. 6 N., R. 1 E.
General manager: J. D. Fuller
Plant manager: William T. Fuller
Employees: 8
Products: agricultural limestone
Daily capacity: 100 tons
Shipping facilities: truck
Geologic formation:
Salem limestone (spalls from company's building stone mill)

30 **DIRECTORY OF CRUSHED LIMESTONE PRODUCERS**

28. **Hoosier Lime and Stone Company**

Salem
Phone 332

Plant and quarry location: Washington County, 0.7 mile west of
Salem, NE $\frac{1}{4}$ sec. 24, T. 2 N., R. 3 E.

Owners: H. G. Hobbs and Sons

Employees: 25 (average)

Products: road stone, agricultural limestone, ready mix concrete,
and concrete and kenlite blocks

Daily capacity: 700 to 800 tons

Shipping facilities: truck

Geologic formations:

Soil and glacial drift	5.0 ft.
St. Louis limestone	25.3 ft.
Salem limestone	40.5 ft.
Harrodsburg limestone	30.5 ft.

29. **Hy-Rock Products Company**

Marengo
Phone 33

Plant and quarry location: Crawford County, near Marengo
SE $\frac{1}{4}$ SW $\frac{1}{4}$ sec. 6, T. 2 S., R. 2 E.

President and plant manager: Glenn W. Bowen

Products: crushed limestone and agricultural limestone

Daily capacity: 1,200 tons

Shipping facilities: rail and truck

Geologic formations:

Soil	5.0 ft.
Sample sandstone	20.0 ft.
Beaver Bend limestone	12.0 ft.
Mooretown formation	12.0 ft.
Paoli limestone	48.0 ft.
Ste. Genevieve limestone	32.0 ft.

Note: underground operation.

30. **Indiana Calcium Corporation**

1500 South Henderson, Bloomington
Phone 6464

Plant and quarry location: Monroe County, south edge of
Bloomington, NW $\frac{1}{4}$ SE $\frac{1}{4}$ sec. 33, T. 9 N., R. 1 W.

Owner: Kenneth Cline

Plant manager: Moten Jones

Employees: 11

30. Indiana Calcium Corporation--Continued

Products: ground limestone
 Daily capacity: 150 tons
 Shipping facilities: truck and rail
 Geologic formation:
 Salem limestone spalls

31. Indiana State Farm

Greencastle
 Phones 898 or 899
 Plant and quarry location: Putnam County, 1 mile southwest of
 Putnamville, NW1/4SW1/4 sec. 17, T. 13 N., R. 4 W.
 Owner: State of Indiana
 Plant manager: Mike Finn
 Employees: about 70
 Products: crushed limestone and agricultural limestone
 Daily capacity: 450 tons
 Shipping facilities: truck and rail
 Geologic formations:

Soil and glacial drift	10.0 ft.
Sample sandstone	2.0 ft.
Beaver Bend limestone	1.0 ft.
Mooretown formation	6.0 ft.
Paoli limestone	3.7 ft.
Ste. Genevieve limestone	66.3 ft.
St. Louis limestone	3.2 ft.

32. J and K Stone, Inc.

R. R. 2, Muncie
 Phone 3-2682
 Plant and quarry location: Delaware County, Cornbread Road and
 Middletown Pike, southwest of Muncie, SW1/4SE1/4 sec. 20,
 T. 20 N., R. 10 E.
 President: John M. McDonald, Jr.
 Plant manager: Stokley Glass
 Employees: 8
 Products: crushed limestone
 Daily capacity: 1,000 tons
 Shipping facilities: truck
 Geologic formations:

Soil and glacial drift	6.0 ft.
Liston Creek limestone	39.2 ft.

32 **DIRECTORY OF CRUSHED LIMESTONE PRODUCERS**

33. **John W. Karch Stone Company**

R. R. 1, Bryant

Phone New Corydon 75

Plant and quarry location: Adams County, 4.9 miles southeast of Geneva, SW1/4SW1/4 sec. 31, T. 25 N., R. 15 E.

Owners: Heirs of John W. Karch

Plant manager: John C. Sink

Employees: 13

Products: crushed limestone, agricultural limestone, and flagstone

Daily capacity: 500 tons

Shipping facilities: truck

Geologic formations:

Soil and glacial drift 4.0 ft.

Huntington dolomite 22.4 ft.

34. **Kixmiller Brothers**

Freelandville

Phones 124 or 126

Plant and quarry location: Sullivan County, 3 miles north of Freelandville, SE1/4SW1/4 sec. 28, T. 6 N., R. 8 W.

Owners: Alvin and Hilbert Kixmiller and Hilda Wells

Plant manager: Hilbert Kixmiller

Employees: 8 men (part time)

Products: agricultural limestone

Daily capacity: 200 tons

Shipping facilities: truck

Geologic formations:

Soil and glacial drift 20.0 ft.

Maria Creek limestone 4.9 ft.

35. **Layton Stone Company**

P. O. Box 61, Westport

Phone 2631

Plant and quarry location: Decatur County, 3.5 miles northeast of Westport, SE1/4NE1/4 sec. 20, T. 9 N., R. 9 E.

Owners: Willard and Paul McQueen

Employees: 6

Products: crushed limestone and agricultural limestone

Daily capacity: 100 tons

Shipping facilities: truck

Geologic formations:

Soil and glacial drift 3.0 ft.

Laurel limestone 22.2 ft.

Osgood formation 1.0 ft.

36. Lehigh Portland Cement Company

Mitchell

Plant and quarry location: Lawrence County, 2 miles northeast of
Mitchell, S1/2 sec. 30, T. 4 N., R. 1 E.

Plant manager: C. E. Eickelberger

Quarry foreman: Gilbert Shecks

Employees: 30

Products: crushed limestone for company's use

Daily capacity: 1,750 tons

Shipping facilities: rail

Geologic formations:

Soil	10.0 ft.
St. Louis limestone	10.0 ft.
Salem limestone	62.7 ft.
Harrodsburg limestone	53.9 ft.

37. Lemmons and Company, Inc.

Lynnville

Phone 43F21

Plant and quarry location: Warrick County, 3 miles south of
Lynnville, SW1/4NE1/4 sec. 22, T. 4 S., R. 8 W.

President: Floyd Lemmons

Plant manager: Robert L. Day

Employees: 15

Products: crushed limestone and agricultural limestone

Daily capacity: 700 tons

Shipping facilities: truck

Geologic formations:

Soil and glacial drift	15.0 ft.
Universal limestone	8.0 ft.

38. Lone Star Cement Corporation

Limedale

Plant and quarry location: Putnam County, 0.25 mile southeast of
Limedale, Junction of secs. 28, 29, 32, and 33, T. 14 N.,
R. 4 W.

Plant manager: J. Van Alstyne

Products: crushed limestone for making cement

Daily capacity: 1,800 tons

Shipping facilities: rail

34 DIRECTORY OF CRUSHED LIMESTONE PRODUCERS

38. Lone Star Cement Corporation--Continued

Geologic formations:

Soil and glacial drift	25.0 ft.
Beaver Bend limestone	13.3 ft.
Mooretown formation	7.9 ft.
Paoli limestone	6.7 ft.
Aux Vases formation	5.2 ft.
Ste. Genevieve limestone	47.9 ft.

39. Louisville Cement Company

Louisville, Ky.

Plant and quarry location: Clark County, 1 mile northeast of Speed Grant 132 and part of Grant 131, Clark Military Survey

Plant manager: A. D. Bickel

Employees: 50

Products: crushed limestone for making cement

Daily capacity: 600 tons (?)

Shipping facilities: truck

Geologic formations:

Soil and glacial drift	4.5 ft.
New Albany shale	5.0 ft.
Sellersburg limestone	21.4 ft.
Jeffersonville limestone	39.6 ft.
Louisville limestone	3.5 ft.

40. McCorkle Stone Company

Milroy

Phone Rushville 37514

Plant and quarry location: Rush County, 4 miles west of Milroy NW1/4NW1/4 sec. 17, T. 12 N., R. 9 E.

Owners: A. M. Holmes and R. L. Flerlage

Plant manager: Paul Hankins

Employees: 9

Products: agricultural limestone and crushed limestone

Daily capacity: 500 tons

Shipping facilities: truck

Geologic formations:

Soil and glacial drift	3.0 ft.
Geneva dolomite	23.7 ft.

41. Manhattan Crushed Stone Company

Greencastle

Phone Reelsville 404

Plant and quarry location: Putnam County, 0.25 mile south of U. S.
40, southeast of Manhattan, NW1/4SW1/4 sec. 24, T. 13 N.,
R. 5 W.

Plant manager: L. D. Rimer

Employees: 14

Products: crushed limestone, agricultural limestone, flagstone,
and riprap

Daily capacity: 800 tons

Shipping facilities: truck

Geologic formations:

Soil and glacial drift 6.5 ft.

Ste. Genevieve limestone 69.0 ft.

42. Mathes Stone Company

Corydon

Phone 8-4206

Plant and quarry location: Harrison County, 3 miles south of
Corydon, SW1/4NE1/4 sec. 13, T. 4 S., R. 3 E.

Owner and plant manager: Carl Mathes

Employees: 7

Products: crushed limestone and agricultural limestone

Daily capacity: 400 tons

Shipping facilities: truck

Geologic formations:

Soil 1.0 ft.

Ste. Genevieve limestone 68.3 ft.

43. May Sand and Gravel Corporation

P. O. Box 227, Station C, Fort Wayne

Phone Harrison 2149

Plant and quarry location: Allen County, Hayden Road, 2 miles
southwest of Fort Wayne, SE1/4NW1/4NE1/4 sec. 29,
T. 30 N., R. 12 E.

President: William May

General manager: P. W. Seitz

Employees: 25

Products: crushed limestone, agricultural limestone, and flagstone

Daily capacity: 2,000 tons

Shipping facilities: truck and rail

43. May Sand and Gravel Corporation--Continued

Geologic formations:

Soil and glacial drift	90.0 ft.
Kokomo limestone	39.4 ft.

44. Meshberger Brothers Stone Corporation

P. O. Box 38, Linn Grove
Phone 5-5311

Plant and quarry location: Adams County, 1 mile north of Linn
Grove, SE1/4SE1/4 sec. 33, T. 26 N., R. 13 E. (Plant no. 1)

Owner: Mrs. Verle Meshberger
General superintendent: Harold Owens
Plant manager: Charles Bate
Employees: 8

Products: crushed limestone and agricultural limestone

Daily capacity: 1,000 tons

Shipping facilities: truck

Geologic formations:

Soil and glacial drift	4.0 ft.
Huntington dolomite	29.6 ft.

45. Meshberger Brothers Stone Corporation

P. O. Box 38, Linn Grove
Phone 5-5311

Plant and quarry location: Adams County, 2.5 miles south of
Pleasant Mills, Center sec. 4, T. 26 N., R. 15 E. (Plant
no. 2)

Owner: Mrs. Oscar Meshberger
General superintendent: Harold Owens
Plant manager: Hugh Reynolds
Employees: 11

Products: agricultural limestone and crushed limestone

Daily capacity: 1,500 tons

Shipping facilities: truck

Geologic formations:

Soil and glacial drift	6.5 ft.
Huntington dolomite	47.4 ft.

46. Meshberger Stone Company, Inc.

P. O. Box 7, Columbus

Phone 4478

Plant and quarry location: Bartholomew County, 9 miles southeast of Columbus, NE1/4 sec. 6, T. 8 N., R. 7 E.

President: Leon Meshberger

Plant manager: Robert Studler

Products: crushed limestone, agricultural limestone, flagstone, and filter stone

Daily capacity: 1,500 tons

Shipping facilities: truck

Geologic formations:

Soil and glacial drift	50.0 ft.
New Albany shale	3.0 ft.
Sellersburg limestone	2.6 ft.
Jeffersonville limestone	45.8 ft.
Geneva dolomite	29.9 ft.
Louisville limestone	4.2 ft.

47. Mitchell Crushed Stone Company, Inc.

R. R. 2, Mitchell

Phone 5

Plant and quarry location: Lawrence County, 0.75 mile west of Georgia, SW1/4NW1/4 sec. 12, T. 3 N., R. 2 W.

Vice president: C. A. Broecker

Plant manager: Byron Green

Employees: 25

Products: crushed limestone, agricultural limestone, and ballast

Daily capacity: 300 tons

Shipping facilities: rail

Geologic formations:

Soil	10.0 ft.
Beaver Bend limestone	6.0 ft.
Mooretown formation	15.5 ft.
Paoli limestone	10.9 ft.
Aux Vases formation	2.1 ft.
Ste. Genevieve limestone	95.9 ft. (from core)

48. Monon Crushed Stone Company, Inc.

Monon

Phone 4101

Plant and quarry location: White County, 1 mile south of Monon SE1/4NE1/4 sec. 28, T. 28 N., R. 4 W.

38 **DIRECTORY OF CRUSHED LIMESTONE PRODUCERS**

48. Monon Crushed Stone Company, Inc. --Continued

President: Nicholas Bozich

Employees: 32

Products: crushed limestone, agricultural limestone, railroad ballast, and filter media

Daily capacity: 4,000 tons

Shipping facilities: rail and truck

Geologic formations:

Soil and glacial drift 10.0 ft.

Huntington dolomite 72.9 ft.

49. Montpelier Stone Company

Montpelier

Phone 4101

Plant and quarry location: Blackford County, north edge of Montpelier, SW1/4NW1/4 sec. 3, T. 24 N., R. 11 E.

Owners: Murhl R. Smith and James E. Smith

Plant manager: James E. Smith

Products: crushed limestone, agricultural limestone, mineral filler, and ready mix concrete

Daily capacity: 800 tons

Shipping facilities: truck

Geologic formations:

Soil and glacial drift 10.0 ft.

Liston Creek limestone 59.7 ft.

50. Mulzer Brothers

1405 Ninth Street, Tell City

Phone 333

Plant and quarry location: Crawford County, 3 miles north of Eckerty, SW1/4NE1/4 sec. 3, T. 2 S., R. 2 W.

Owners: Mulzer Brothers

Plant manager: Edgar Mulzer

Employees: 18

Products: crushed limestone, agricultural limestone, and riprap

Daily capacity: 2,000 tons

Shipping facilities: truck

Geologic formations:

Soil 22.8 ft.

Glen Dean limestone 34.0 ft.

51. Mulzer Brothers

1405 Ninth Street, Tell City

Phone 333

Plant and quarry location: Perry County, 1 mile west of Derby
SE1/4SW1/4 sec. 32, T. 5 S., R. 1 W.

Owners: Mulzer Brothers

Plant manager: Roland Mulzer

Products: crushed limestone, agricultural limestone, and riprap

Shipping facilities: truck and barge

Geologic formations:

Soil	2.0 ft.
Hardinsburg formation	12.6 ft.
Golconda limestone	43.9 ft.

52. Muncie Stone and Lime Company

P. O. Box 1212, Muncie

Phone 2-1901

Plant and quarry location: Delaware County, Hoyt Avenue and 21st
Street, Muncie, SW1/4NE1/4 sec. 20, T. 20 N., R. 10 E.

President: A. F. Dunkin

Plant manager: J. J. Murnane

Employees: 22

Products: crushed limestone and agricultural limestone

Daily capacity: 700 tons

Shipping facilities: truck

Geologic formations:

Soil and glacial drift	6.5 ft.
Liston Creek limestone	48.2 ft.

53. Napoleon Quarry

Napoleon

Plant and quarry location: Ripley County, 0.5 mile east of Napoleon
NE1/4NE1/4 sec. 29, T. 9 N., R. 11 E.

Owner: Dr. George Roe

Plant manager: E. H. Dean

Employees: 9

Products: crushed limestone and agricultural limestone

Daily capacity: 400 tons

Shipping facilities: truck

Geologic formations:

Soil and glacial drift	8.0 ft.
Laurel limestone	19.2 ft.

54. New Point Stone Company

306 Schrader Street, Batesville
Phone 1835

Plant and quarry location: Decatur County, 1 mile north of New Point, SW1/4SW1/4 sec. 8, T. 10 N., R. 11 E.

Owners and plant managers: Louis Wanstrath and Norman Wanstrath

Employees: 10 to 12

Products: crushed limestone, agricultural limestone, flagstone and riprap

Daily capacity: 1,200 tons

Shipping facilities: truck and rail

Geologic formations:

Soil and glacial drift	10.0 ft.
Laurel limestone	15.8 ft.
Osgood formation	11.4 ft.
Brassfield formation	5.1 ft.
Whitewater formation	1.6 ft.

55. Newton County Stone Company

Kentland

Phone 19

Plant and quarry location: Newton County, 2.5 miles east of Kentland, NW1/4NW1/4NE1/4 sec. 25, T. 27 N., R. 9 W.

Plant manager: C. A. Broecker

Employees: 25

Products: crushed limestone and agricultural limestone

Daily capacity: 2,500 tons

Shipping facilities: truck and rail

Geologic formations:

Middle Ordovician limestones and dolomites	105.0 ft.
---	-----------

56. Ohio and Indiana Stone Corporation

Greencastle

Phone 129

Plant and quarry location: Putnam County, 1 mile southwest of Greencastle, Junction of secs. 19, 20, 29, and 30, T. 14 N., R. 4 W.

Owner: The France Stone Company, Toledo 4, Ohio

Plant manager: P. E. Mahoney

Employees: 30

Products: crushed limestone, agricultural limestone, ballast, and fluxstone

56. Ohio and Indiana Stone Corporation--Continued

Daily capacity: 2,300 tons

Shipping facilities: truck and rail

Geologic formations:

Soil and glacial drift	3.0 ft.
Ste. Genevieve limestone	53.5 ft.

57. Oolitic Ground Limestone Company

Bedford

Phone 2628

Plant and quarry location: Lawrence County, 1 mile west of Bedford, SE1/4SE1/4 sec. 16, T. 5 N., R. 1 W.

Owners and plant managers: H. K. Gilliatt and C. G. Gilliatt

Employees: 10

Products: crushed limestone, agricultural limestone, and fluxstone

Daily capacity: 500 tons

Shipping facilities: rail and truck

Geologic formations:

Soil	9.9 ft.
Salem limestone	31.5 ft.
Harrodsburg limestone	13.7 ft.

58. Pipe Creek Stone Company

Swayzee

Phone Sweetser 2171

Plant and quarry location: Grant County, 2.5 miles west of Sweetser, SE1/4 sec. 35, T. 25 N., R. 6 E.

President: F. W. Irving

Plant manager: John R. Irving

Employees: 18

Products: crushed limestone, agricultural limestone, and flagstone

Daily capacity: 2,000 tons

Shipping facilities: truck

Geologic formations:

Soil and glacial drift	13.0 ft.
Liston Creek limestone	30.5 ft.
Mississinewa shale	17.3 ft.

42 DIRECTORY OF CRUSHED LIMESTONE PRODUCERS

59. Portland Stone Company

Fairview

Plant and quarry location: Randolph County, 1.7 miles southeast of
Fairview, SE1/4NW1/4 sec. 11, T. 21 N., R. 12 E.

President: R. V. Smith

Employees: 7

Products: crushed limestone, agricultural limestone, and flagstone

Daily capacity: 150 tons

Shipping facilities: truck

Geologic formations:

Soil and glacial drift	5.0 ft.
Huntington dolomite	19.9 ft.

60. Radcliff and Berry, Inc.

Orleans

Phone 212

Plant and quarry location: Orange County, 1 mile northwest of
Orleans, SE1/4SW1/4 sec. 24, T. 3 N., R. 1 W.

President and plant manager: Max Radcliff

Employees: 12

Products: crushed limestone and agricultural limestone

Daily capacity: 1,500 tons

Shipping facilities: truck

Geologic formations:

Soil	2.0 ft.
Paoli limestone	14.9 ft.
Aux Vases formation	3.0 ft.
Ste. Genevieve limestone	70.0 ft.

61. Radcliff and Berry, Inc.

Orleans

Phone 212

Plant and quarry location: Orange County, 2.6 miles west of Paoli
NE1/4NW1/4 sec. 33, T. 2 N., R. 1 W.

President: Max Radcliff

Plant manager: Calvin Neukam

Employees: 9

Products: crushed limestone and agricultural limestone

Daily capacity: 200 tons

Shipping facilities: truck

61. Radcliff and Berry, Inc. --Continued

Geologic formations:

Soil	5.0 ft.
Paoli limestone	17.7 ft.
Aux Vases formation	2.4 ft.
Ste. Genevieve limestone	53.9 ft.

62. Ripley County Construction Company

Osgood

Phone 3412

Plant and quarry location: Ripley County, south edge of Osgood
SW1/4SW1/4 sec. 22, T. 8 N., R. 11 E.

Owner and plant manager: Howard J. Dean

Employees: 15

Products: crushed limestone and agricultural limestone

Daily capacity: 500 tons

Shipping facilities: truck and rail

Geologic formations:

Soil and glacial drift	10.0 ft.
Laurel limestone	22.9 ft.
Osgood formation	2.9 ft.

63. Rockledge Products, Inc.

R. R. 5, Portland

Phone 342

Plant and quarry location: Jay County, 1.5 miles west of Portland
NW1/4 sec. 30, T. 23 N., R. 14 E.

General manager: R. V. Smith

Employees: 16

Products: crushed limestone and agricultural limestone

Daily capacity: 450 tons

Shipping facilities: truck

Geologic formations:

Soil and glacial drift	15.0 ft.
Huntington dolomite	45.2 ft.

64. Rush County Stone Company, Inc.

R. R. 1, Milroy

Phones Milroy 263-5 and Waldron 2904

Plant and quarry location: Rush County, west edge of Moscow
W1/2SE1/4 sec. 18, T. 12 N., R. 9 E.

44 **DIRECTORY OF CRUSHED LIMESTONE PRODUCERS**

64. Rush County Stone Company, Inc. --Continued

Owners: Joe Columbe, Pat Bucci, A. R. Bucci

Plant manager: Wallace Carpenter

Employees: 14

Products: crushed limestone, agricultural limestone, flagstone
and rubble

Daily capacity: 800 tons

Shipping facilities: truck

Geologic formations:

Soil and glacial drift 4.0 ft.

Geneva dolomite 23.0 ft.

65. Russellville Stone Company

P. O. Box 246, Russellville

Phone 100

Plant and quarry location: Putnam County, east edge of Russellville
SE1/4SE1/4 sec. 5, T. 16 N., R. 5 W., and NW1/4SE1/4 sec.
8, T. 16 N., R. 5 W.

Vice president: H. C. Gorman

Plant managers: Ralph Wilson and Andy Gross

Employees: 20

Products: crushed limestone and agricultural limestone

Daily capacity: 1,500 tons

Shipping facilities: rail

Geologic formations:

Soil and glacial drift 25.0 ft.

St. Louis limestone 7.4 ft.

Salem limestone 10.0 ft.

Harrodsburg limestone 21.2 ft.

66. Scott County Stone Company

P. O. Box 65, Scottsburg

Phone 4581

Plant and quarry location: Scott County, 7 miles east of Scottsburg
and 2 miles south of Blocher, NE1/4NW1/4 sec. 20, T. 3 N.,
R. 8 E.

President and plant manager: Albert Berry

Employees: 17

Products: crushed limestone and agricultural limestone

Daily capacity: 3,000 tons

Shipping facilities: truck

66. Scott County Stone Company--Continued

Geologic formations:

Soil and glacial drift	37.6 ft.
Sellersburg limestone	18.7 ft.
Jeffersonville limestone	40.0 ft.
Louisville limestone	2.8 ft.

67. Sellersburg Stone Company

Sellersburg

Plant and quarry location: Clark County, near Speed, Grant 132,

Clark Military Survey

President: William Enringer

Plant manager: John Regan

Employees: 17

Products: crushed limestone and agricultural limestone

Daily capacity: 1,200 tons

Shipping facilities: truck

Geologic formations:

Soil and glacial drift	4.5 ft.
New Albany shale	5.0 ft.
Sellersburg limestone	21.4 ft.
Jeffersonville limestone	39.6 ft.
Louisville limestone	3.5 ft.

68. Springville Quarry, Ralph Rogers and Company, Inc.

Box 147, Bedford

Phone 7367

Plant and quarry location: Lawrence County, 2.5 miles southwest
of Springville, SE1/4SE1/4 sec. 29, T. 6 N., R. 2 W.

Sales manager: John Sanford

Employees: 20

Products: crushed limestone and agricultural limestone

Daily capacity: 2,000 tons

Shipping facilities: truck

Geologic formations:

Soil	5.4 ft.
Beaver Bend limestone	10.2 ft.
Mooretown formation	26.1 ft.
Paoli limestone	11.0 ft.
Aux Vases formation	4.6 ft.
Ste. Genevieve limestone	115.5 ft.
St. Louis limestone	14.6 ft.

69. St. Paul Quarries, Inc.

410-416 Illinois Building, Indianapolis

Phone Melrose 4-8557

Plant and quarry location: Shelby County, southwest of St. Paul
NE1/4NW1/4 sec. 9, T. 11 N., R. 8 E.

President: E. D. Kelb

Plant manager: Charles Lee

Employees: 6

Products: crushed limestone, agricultural limestone, and flagstone

Daily capacity: 1,500 tons

Shipping facilities: rail and truck

Geologic formations:

Soil and glacial drift	3.5 ft.
Laurel limestone	27.7 ft.

70. Standard Materials Corporation

Lapel

Phone 68

Plant and quarry location: Madison County, near Lapel
NW1/4NE1/4 sec. 28, T. 19 N., R. 6 E.

President: C. M. Herriman

Plant manager: Eugene George

Employees: 16

Products: crushed limestone

Daily capacity: 1,500 tons

Shipping facilities: truck

Geologic formations:

Soil and glacial drift	12.0 ft.
Liston Creek limestone	74.8 ft.

71. Stony Creek Stone Company

R. R. 4, Noblesville

Phone 438

Plant and quarry location: Hamilton County, 3 miles east of
Noblesville, SE1/4NW1/4 sec. 3, T. 18 N., R. 5 E.

President and plant manager: Richard J. Irving

Employees: 13

Products: crushed limestone and agricultural limestone

Daily capacity: 800 tons

Shipping facilities: truck

Geologic formations:

Soil and glacial drift	4.5 ft.
Liston Creek limestone	35.8 ft.

72. Stuntz-Yeoman Stone Company

P. O. Box 57, Delphi
Phone 80

Plant and quarry location: Carroll County, 1 mile west of Delphi
SE1/4NE1/4 sec. 19, T. 25 N., R. 2 W.

President: E. F. Stuntz

Employees: 12

Products: crushed limestone and agricultural limestone

Daily capacity: 700 tons

Shipping facilities: truck

Geologic formations:

Soil and glacial drift	2.0 ft.
Huntington dolomite	59.0 ft.

73. Sunlight Coal Company

Lynnville
Phone 927-F-2

Plant and quarry location: Warrick County, southeast of Lynnville
NW1/4SE1/4 sec. 11, T. 4 S., R. 8 W., and
NE1/4SE1/4 sec. 11, T. 4 S., R. 8 W.

Plant manager: Sanders Payne

Employees: 6

Products: crushed limestone for own use

Daily capacity: 750 tons

Shipping facilities: truck

Geologic formations:

Soil and glacial drift	8.0 ft.
Universal limestone	12.0 ft.

74. Tri-County Stone Company

Cross Plains

Plant and quarry location: Switzerland County, 4 miles south of
Cross Plains, NE1/4NW1/4 sec. 9, T. 5 N., R. 12 E.

Owners: Harold Wahlman and William Daiker

Plant manager: William Daiker

Employees: 12

Products: crushed limestone and agricultural limestone

Daily capacity: 550 tons

Shipping facilities: truck

74. Tri-County Stone Company--Continued

Geologic formations:

Soil and glacial drift	8.0 ft.
Osgood formation	3.1 ft.
Brassfield formation	11.6 ft.
Whitewater formation	14.2 ft.

75. Clayton Winders and Sons

Spencer

Phone 114

Plant and quarry location: Morgan County, 2.5 miles south of
Lewisville, NW1/4SW1/4 sec. 34, T. 12 N., R. 2 W.

Owners and plant managers: Clayton Winders and Sons

Employees: 8 to 10

Products: crushed limestone and agricultural limestone

Daily capacity: 600 tons

Shipping facilities: truck

Geologic formations:

Soil and glacial drift	10.0 ft.
Harrodsburg limestone	28.1 ft.

76. Clayton Winders and Sons Quarry

Spencer

Plant and quarry location: Owen County, 1.6 miles northwest of
Spencer, NW1/4NE1/4 sec. 24 and SW1/4SE1/4 sec. 13,
T. 10 N., R. 4 W.

Owners and plant managers: Clayton Winders and Sons

Employees: 7

Products: crushed limestone

Daily capacity: 400 tons

Shipping facilities: truck

Geologic formations:

Soil	11.7 ft.
Ste. Genevieve limestone	32.0 ft.

77. Yeoman Stone Company

2900 West Daffenbaugh, Kokomo

Phone 4314

Plant and quarry location: Howard County, 1.9 miles southwest of
Kokomo, NW1/4NE1/4 sec. 3, T. 23 N., R. 3 E.

President and plant manager: D. A. Yeoman

77. Yeoman Stone Company--Continued

Employees: 13

Products: crushed limestone

Daily capacity: 900 tons

Shipping facilities: truck

Geologic formations:

Soil and glacial drift	8.0 ft.
------------------------	---------

Kokomo limestone	24.3 ft.
------------------	----------

50 DIRECTORY OF CRUSHED LIMESTONE PRODUCERS

PRODUCERS OF CRUSHED LIMESTONE LISTED BY COUNTIES

ADAMS COUNTY

- 33. John W. Karch Stone Company
- 44. Meshberger Brothers Stone Corporation
- 45. Meshberger Brothers Stone Corporation

ALLEN COUNTY

- 43. May Sand and Gravel Corporation

BARTHOLOMEW COUNTY

- 46. Meshberger Stone Company, Inc.

BLACKFORD COUNTY

- 49. Montpelier Stone Company

CARROLL COUNTY

- 72. Stuntz-Yeoman Stone Company

CASS COUNTY

- 6. Cass County Stone Company
- 19. The France Stone Company

CLARK COUNTY

- 1. T. J. Atkins and Company, Inc.
- 39. Louisville Cement Company
- 67. Sellersburg Stone Company

CRAWFORD COUNTY

- 29. Hy-Rock Products Company
- 50. Mulzer Brothers

DECATUR COUNTY

- 25. Harris City Stone Company
- 35. Layton Stone Company
- 54. New Point Stone Company

DELAWARE COUNTY

- 16. Eaton Stone, Inc.
- 32. J and K Stone, Inc.
- 52. Muncie Stone and Lime Company

GRANT COUNTY

- 58. Pipe Creek Stone Company

GREENE COUNTY

- 23. Gorden and Shepard Quarry

HAMILTON COUNTY

- 71. Stony Creek Stone Company

HARRISON COUNTY

- 11. Corydon Stone Company
- 13. Davis Crushed Stone and Lime Company
- 42. Mathes Stone Company

HOWARD COUNTY

- 77. Yeoman Stone Company

52 DIRECTORY OF CRUSHED LIMESTONE PRODUCERS

HUNTINGTON COUNTY

18. The Erie Stone Company

JASPER COUNTY

2. W. C. Babcock Construction Company, Inc.

JAY COUNTY

63. Rockledge Products, Inc.

JENNINGS COUNTY

22. Paul Frank Quarry

LAWRENCE COUNTY

3. Bedford Ground Limestone Company
27. Heltonville Agstone Company
36. Lehigh Portland Cement Company
47. Mitchell Crushed Stone Company, Inc.
58. Oolitic Ground Limestone Company
68. Springville Quarry, Ralph Rogers and Company, Inc.

MADISON COUNTY

70. Standard Materials Corporation

MONROE COUNTY

4. Bloomington Crushed Stone Company
30. Indiana Calcium Corporation

MORGAN COUNTY

75. Clayton Winders and Sons

PRODUCERS OF CRUSHED LIMESTONE

53

NEWTON COUNTY

55. Newton County Stone Company

ORANGE COUNTY

5. Calcar Quarries
7. Cave Stone Company
60. Radcliff and Berry, Inc.
61. Radcliff and Berry, Inc.

OWEN COUNTY

15. Dunn Limestone Company, Inc.
76. Clayton Winders and Sons Quarry

PARKE COUNTY

12. Cumberland Quarries, Inc.

PERRY COUNTY

51. Mulzer Brothers

PULASKI COUNTY

20. Francesville Stone Company

PUTNAM COUNTY

9. Cloverdale Stone Company
31. Indiana State Farm
38. Lone Star Cement Corporation
41. Manhattan Crushed Stone Company
56. Ohio and Indiana Stone Corporation
65. Russellville Stone Company

54 DIRECTORY OF CRUSHED LIMESTONE PRODUCERS

RANDOLPH COUNTY

- 24. H and R Stone Company
- 59. Portland Stone Company

RIPLEY COUNTY

- 10. Cord Stone Company
- 21. Paul Frank Quarry, Inc.
- 53. Napoleon Quarry
- 62. Ripley County Construction Company

RUSH COUNTY

- 40. McCorkle Stone Company
- 64. Rush County Stone Company, Inc.

SCOTT COUNTY

- 66. Scott County Stone Company

SHELBY COUNTY

- 8. Cave Stone Company, Inc.
- 69. St. Paul Quarries, Inc.

SULLIVAN COUNTY

- 34. Kixmiller Brothers

SWITZERLAND COUNTY

- 74. Tri-County Stone Company

WARRICK COUNTY

- 37. Lemmons and Company, Inc.
- 73. Sunlight Coal Company

PRODUCERS OF CRUSHED LIMESTONE

55

WASHINGTON COUNTY

28. Hoosier Lime and Stone Company

WAYNE COUNTY

14. DeBolt Concrete Company

WELLS COUNTY

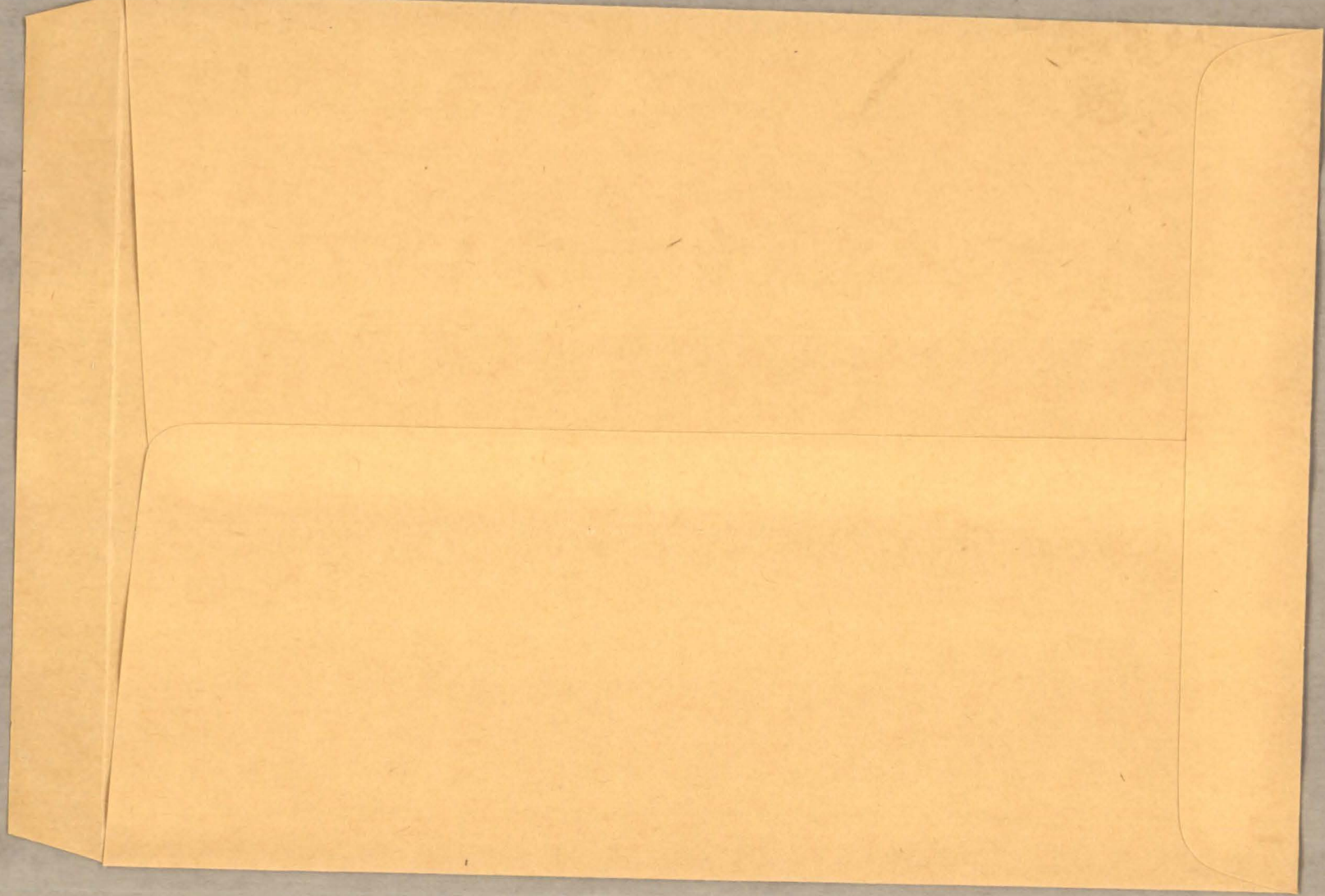
17. The Erie Stone Company
26. Heller Stone Company

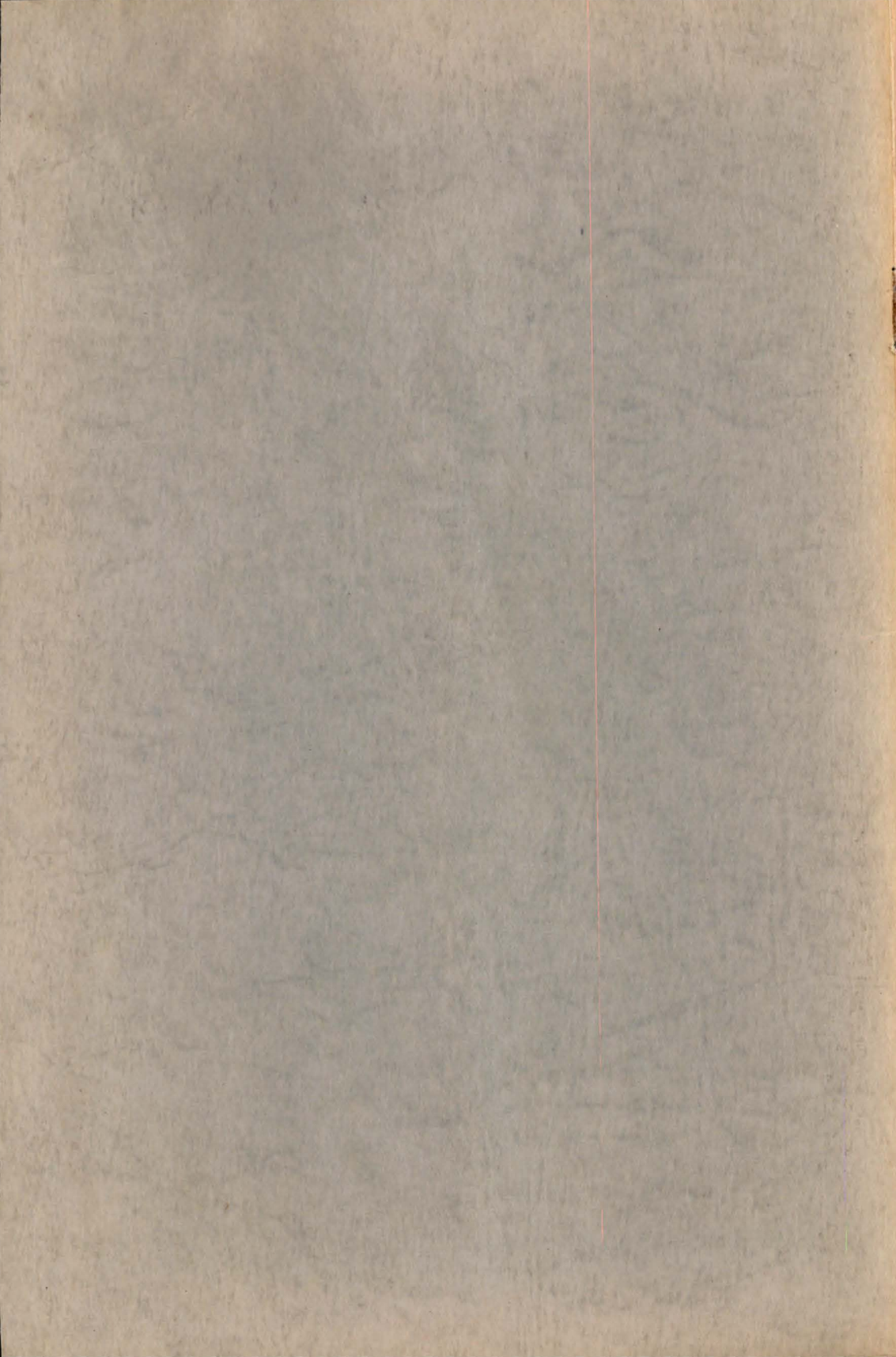
WHITE COUNTY

48. Monon Crushed Stone Company, Inc.

LITERATURE CITED

- Callaghan, Eugene, and Ecker, Jean, 1948, Directory of producers of mineral raw materials, exclusive of oil and gas, in Indiana: Ind. Div. Geology Directory 1, 88 p., 1 fig.
- Cumings, E. R., and Shrock, R. R., 1928, The geology of the Silurian rocks of northern Indiana: Ind. Dept. Conserv. Pub. 75, 226 p., 58 figs., 2 maps, 1 chart.
- Gutschick, K. A., 1955, Aggregate industries review and forecast: 1954, peak year for aggregates: Pit and Quarry, v. 47, no. 7, p. 117-122.
- McGrew, Brownell, 1950, Crushing practice and theory: Rock Products, v. 53, no. 6, p. 118-120.
- Patton, J. B., 1949, Crushed stone in Indiana: Ind. Div. Geology Rept. Progress 3, 47 p., 1 pl.
- , 1955, Underground storage of liquid hydrocarbons in Indiana: Ind. Geol. Survey Rept. Progress 9, 19 p., 1 pl., 1 fig., 1 table.





PRODUCERS OF CRUSHED LIMESTONE

1. T. J. Atkins and Company, Inc.
2. W. C. Babcock Construction Company, Inc.
3. Bedford Ground Limestone Company
4. Bloomington Crushed Stone Company
5. Calcar Quarries
6. Cass County Stone Company
7. Cave Stone Company
8. Cave Stone Company, Inc.
9. Cloverdale Stone Company
10. Cord Stone Company
11. Corydon Stone Company
12. Cumberland Quarries, Inc.
13. Davis Crushed Stone and Lime Company
14. DeBolt Concrete Company
15. Dunn Limestone Company, Inc.
16. Eaton Stone, Inc.
17. The Erie Stone Company
18. The Erie Stone Company
19. The France Stone Company
20. Francesville Stone Company
21. Paul Frank Quarry, Inc.
22. Paul Frank Quarry
23. Gorden and Shepard Quarry
24. H and R Stone Company
25. Harris City Stone Company
26. Heller Stone Company
27. Heltonville Agstone Company
28. Hoosier Lime and Stone Company
29. Hy-Rock Products Company
30. Indiana Calcium Corporation
31. Indiana State Farm
32. J and K Stone, Inc.
33. John W. Karch Stone Company
34. Kixmiller Brothers
35. Layton Stone Company
36. Lehigh Portland Cement Company
37. Lemmons and Company, Inc.
38. Lone Star Cement Corporation
39. Louisville Cement Company
40. McCorkle Stone Company
41. Manhattan Crushed Stone Company
42. Mathes Stone Company
43. May Sand and Gravel Corporation
44. Meshberger Brothers Stone Corporation
45. Meshberger Brothers Stone Corporation
46. Meshberger Stone Company, Inc.
47. Mitchell Crushed Stone Company, Inc.
48. Monon Crushed Stone Company, Inc.
49. Montpelier Stone Company
50. Mulzer Brothers
51. Mulzer Brothers
52. Muncie Stone and Lime Company
53. Napoleon Quarry
54. New Point Stone Company
55. Newton County Stone Company
56. Ohio and Indiana Stone Corporation
57. Oolitic Ground Limestone Company
58. Pipe Creek Stone Company
59. Portland Stone Company
60. Radcliff and Berry, Inc.
61. Radcliff and Berry, Inc.
62. Ripley County Construction Company
63. Rockledge Products, Inc.
64. Rush County Stone Company, Inc.
65. Russellville Stone Company
66. Scott County Stone Company
67. Sellersburg Stone Company
68. Springville Quarry,
Ralph Rogers and Company, Inc.
69. St. Paul Quarries, Inc.
70. Standard Materials Corporation
71. Stony Creek Stone Company
72. Stuntz-Yeoman Stone Company
73. Sunlight Coal Company
74. Tri-County Stone Company
75. Clayton Winders and Sons
76. Clayton Winders and Sons Quarry
77. Yeoman Stone Company

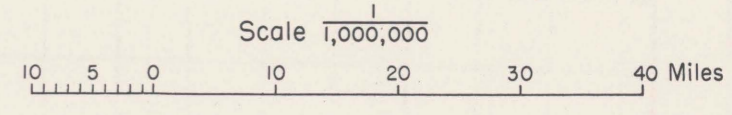
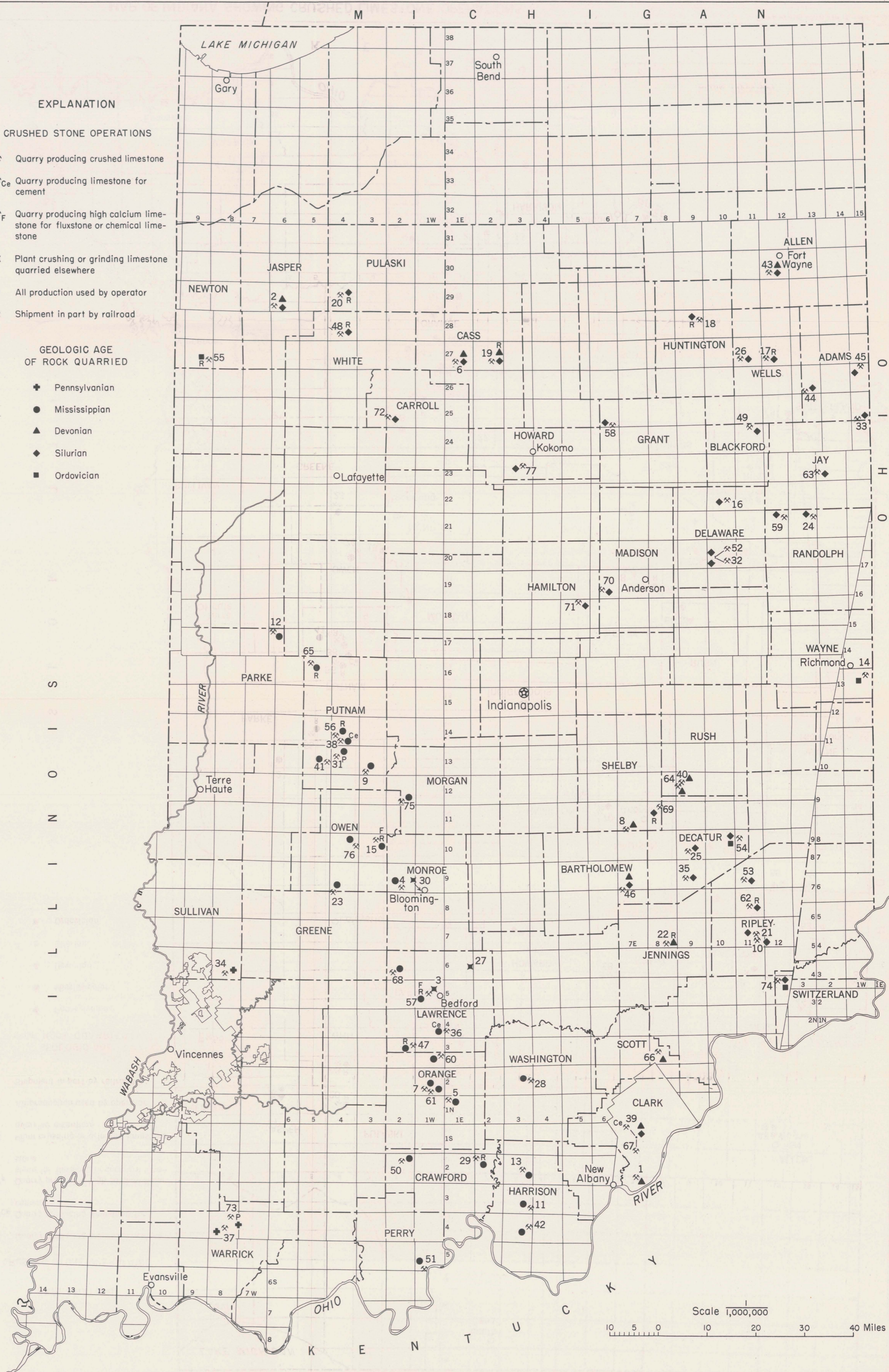
EXPLANATION

- CRUSHED STONE OPERATIONS
- ✕ Quarry producing crushed limestone
 - ✕_{Ce} Quarry producing limestone for cement
 - ✕_F Quarry producing high calcium limestone for fluxstone or chemical limestone
 - ✕ Plant crushing or grinding limestone quarried elsewhere
 - P All production used by operator
 - R Shipment in part by railroad

GEOLOGIC AGE OF ROCK QUARRIED

- ✦ Pennsylvanian
- Mississippian
- ▲ Devonian
- ◆ Silurian
- Ordovician

Numbers and names correspond to those in text.



Base from Map of Indiana, 1950 edition, published by U.S. Geological Survey. Minor revisions and additions made from Indiana Department of Conservation, Geological Survey, county base maps.

MAP OF INDIANA SHOWING CRUSHED LIMESTONE OPERATIONS

Compilation complete to June 1, 1956

By Duncan J. McGregor
 1956